

## Wellington All-China Focus Equity N U Acc GBP

### What is the Fund's objective?

The Wellington All-China Focus Equity Fund is actively managed and seeks to generate long-term total returns in excess of the MSCI China All Shares Index by investing in companies located in, and/or conducting substantial business in China. The investment approach is based on proprietary bottom-up fundamental research, focused on identifying, what we believe to be, high quality companies with strong governance records.

### Cumulative Performance




	3m	6m	1yr	3yrs	5yrs
Wellington All-China Focus Equity N U Acc GBP	-3.0	+3.3	+5.3	-7.8	-41.5
Equity - China	+2.7	+12.7	+18.1	+3.1	-27.6
Rank within sector	55 / 73	63 / 71	63 / 70	52 / 66	52 / 57
Quartile	3	4	4	4	4

### Fund Information

Sector	Equity - China
Asset Class	Equity
Launch Date	08-Jan-2020
Fund Size	£25.0m / \$33.9m (17-Feb-2026)
Fund Manager	Bo Z Meunier

### How does FE fundinfo rate this fund?

FE fundinfo Crown Rating	
Risk Score	186

### Investment Details

Initial Charge	0.00%
Annual Charges	0.95%
Note to charges	n/a
Minimum Initial Investment	£ 5,000
Minimum Additional Investment	£ 1,000
Dividend Policy	n/a

### Prices

Unit Type	ACC
Mid	11.42(GBP)
Price Date	17 Feb 2026
Yield	n/a

### Codes

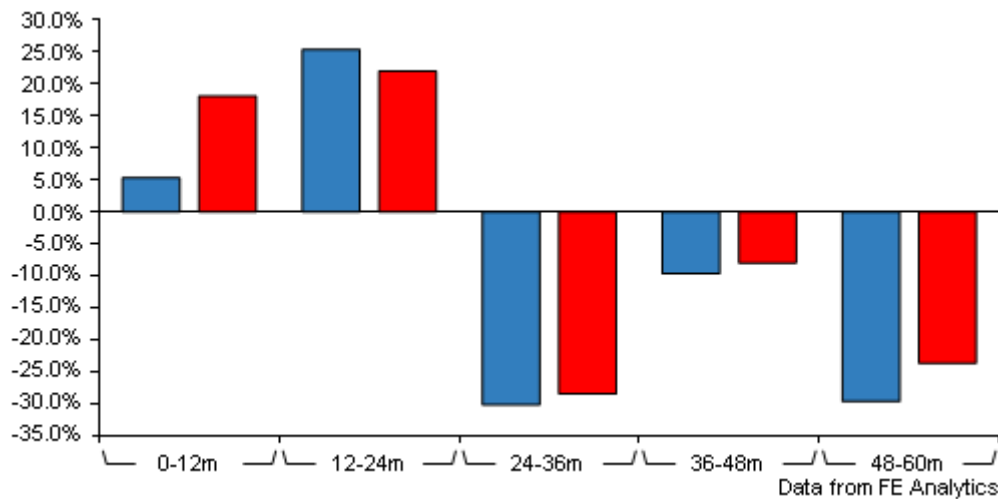
Citicode	QIRC
SEDOL	BK5STR8
ISIN	IE00BK5STR80

### Contact Details

Website	<a href="http://www.wellingtonfunds.com">www.wellingtonfunds.com</a>
Email	<a href="mailto:ukdistribution@wellington.com">ukdistribution@wellington.com</a>

# Wellington All-China Focus Equity N U Acc GBP

## Discrete Performance



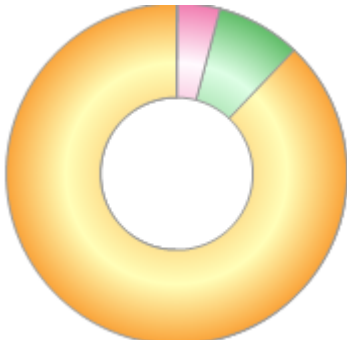
	0-12m	12m-24m	24m-36m	36m-48m	48m-60m
Wellington All-China Focus Equity N U Acc GBP	+5.3	+25.4	-30.2	-9.7	-29.7
Equity - China	+18.1	+22.0	-28.5	-8.0	-23.7
Rank within sector	63 / 70	30 / 69	43 / 66	44 / 62	39 / 57
Quartile	4	2	3	3	3

Price total return performance figures are calculated on a bid price to bid price basis (mid to mid where applicable) with gross income (dividends) reinvested. Performance figures are shown in Pound Sterling (GBP).

# Wellington All-China Focus Equity N U Acc GBP

## Asset Allocation (31 Jan 2026)

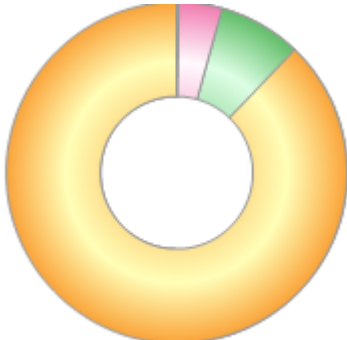
Rank	Asset Classes	%
1	Chinese Equities	87.94
2	Hong Kong Equities	7.97
3	Taiwanese Equities	4.03
4	Money Market	0.06



Powered by data from FE fundinfo

## Regional Breakdown (31 Jan 2026)

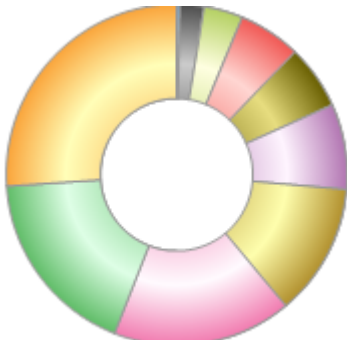
Rank	Regions	%
1	China	87.94
2	Hong Kong	7.85
3	Taiwan	4.08
4	USA	0.08
5	EU	0.05



Powered by data from FE fundinfo

## Sector Breakdown (31 Jan 2026)

Rank	Sectors	%
1	Consumer Discretionary	26.08
2	Financials	17.95
3	Communications	17.01
4	Information Technology	12.63
5	Industrials	8.08
6	Consumer Staples	6.05
7	Health Care	5.88
8	Utilities	3.67
9	Real Estate	2.33
10	Others	0.32



Powered by data from FE fundinfo

## Top Holdings (31 Jan 2026)

Rank	Largest Holdings	%
1	TENCENT HOLDINGS LTD	9.18
2	ALIBABA GROUP HOLDING LTD	8.44

## Wellington All-China Focus Equity N U Acc GBP

Rank	Largest Holdings	%
3	NETEASE INC	7.83
4	KWEICHOW MOUTAI CO LTD	4.15
5	CHINA PACIFIC INS GRP CO LTD	3.93
6	HONG KONG EXCHANGES & CLEARING	3.69
7	MEDIATEK INC	3.53
8	PICC PROP & CASUALTY CO LTD	3.35
9	AIA GROUP LTD	3.23
10	MEITUAN	2.78