



Polar Capital Global Absolute Return I Acc USD

What is the Fund's objective?

The objective of the Fund is to achieve a positive absolute return over rolling 12-month periods. Absolute return means that the Fund aims to generate a positive return in both rising and falling markets. There is no guarantee the fund will deliver a positive return over one, or any number of 12- month periods.



Cumulative Performance



	3m	6m	1yr	3yrs	5yrs
 Polar Capital Global Absolute Return I Acc USD	+0.8	-0.4	+4.8	+18.6	+39.5
 IA Targeted Absolute Return	+1.2	+2.7	+8.5	+10.3	+17.5

Sector	IA Targeted Absolute Return
Asset Class	Mixed Asset
Launch Date	31-Dec-2018
Fund Size	£73.8m / \$96.2m (10-Oct-2024)
Fund Manager	David Keetley Stephen McCormick

How does FE fundinfo rate this fund?

Alpha Manager	David Keetley
Rating	Stephen McCormick
FE fundinfo Crown Rating	
Risk Score	

Investment Details

Initial Charge	0.00%
Annual Charges	1.00%
Note to charges	Initial Charges: max.;
Minimum Initial Investment	n/a
Minimum Additional Investment	n/a
Dividend Policy	n/a

Prices

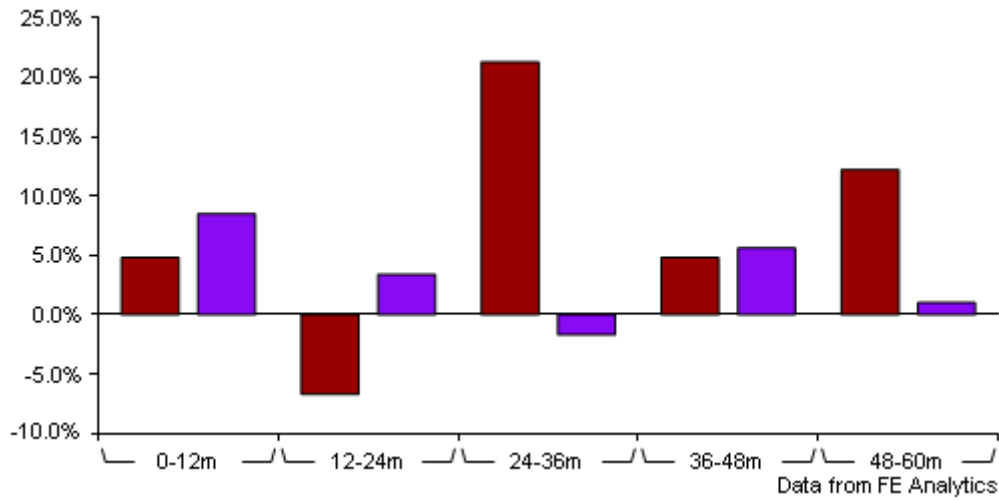
Unit Type	ACC
Mid	145.07(USD)
Price Date	10 Oct 2024
Yield	n/a



Codes

Citicode	PUX1
SEDOL	BDTYJB7
ISIN	IE00BDTYJB74

Polar Capital Global Absolute Return I Acc USD

Discrete Performance



	0-12m	12m-24m	24m-36m	36m-48m	48m-60m
 Polar Capital Global Absolute Return I Acc USD	+4.8	-6.7	+21.3	+4.8	+12.2
 IA Targeted Absolute Return	+8.5	+3.4	-1.7	+5.6	+1.0

All prices in Pence Sterling (GBX) unless otherwise specified. Price total return performance figures are calculated on a bid price to bid price basis (mid to mid for OEICs) with net income (dividends) reinvested. Performance figures are shown in Pound Sterling (GBP).

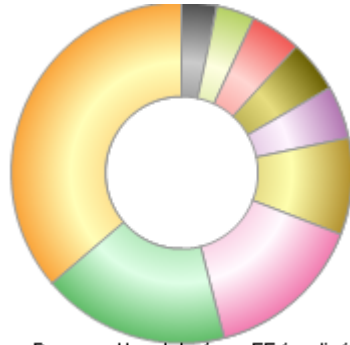
Contact Details

Address 16 Palace Street, London, United Kingdom, SW1E 5JD
Telephone numbers +44 (0) 20 7227 2799 (Fax Number)
 +44 (0) 20 7227 2700 (Main Number)
Website www.polarcapital.co.uk
Email Investor-Relations@polarcapital.co.uk

Polar Capital Global Absolute Return | Acc USD

Asset Allocation (30 Aug 2024)

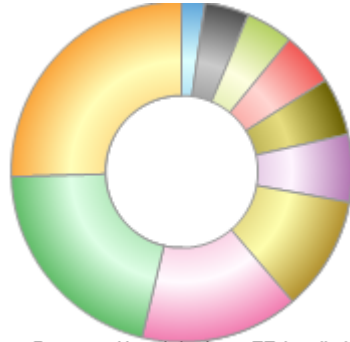
Rank	Asset Classes	%
1	US Fixed Interest	52.10
2	Money Market	25.45
3	Japanese Fixed Interest	21.73
4	American Emerging Fixed Interest	13.20
5	UK Fixed Interest	7.16
6	Dutch Fixed Interest	7.07
7	Spanish Fixed Interest	6.85
8	Australian Fixed Interest	5.21
9	Italian Fixed Interest	4.83
10	Others	-43.60



Powered by data from FE fundinfo

Regional Breakdown (30 Aug 2024)

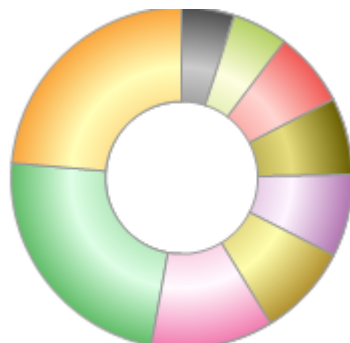
Rank	Regions	%
1	Cash & Cash Equivalents	25.45
2	USA	20.77
3	Japan	15.02
4	Cayman Islands	10.87
5	Netherlands	6.41
6	UK	5.48
7	Spain	5.14
8	Canada	4.47
9	Taiwan	4.24
10	Others	2.15



Powered by data from FE fundinfo

Sector Breakdown (30 Aug 2024)

Rank	Sectors	%
1	Money Market	25.45
2	Information Technology	25.43
3	Health Care	12.49
4	Financials	9.51
5	Materials	8.37
6	Industrials	7.94
7	Telecommunications	7.66
8	Energy	5.74
9	Utilities	5.37
10	Others	-7.96



Powered by data from FE fundinfo

Top Holdings (30 Aug 2024)

Rank	Largest Holdings	%
1	SBIHLD 0 07/25/31 CFD	7.79
2	HONGQI 5 1/4 01/25/26 CFD	7.00

Polar Capital Global Absolute Return I Acc USD

Rank	Largest Holdings	%
3	CLNXSM 0 1/2 07/05/28 CFD	6.85
4	IBIDEN 0 03/14/31 CFD	5.86
5	BE 3 06/01/29	5.72
6	JETLN 1 5/8 06/10/26 CFD	5.34
7	TLXAU 2 3/8 07/30/29	5.21
8	WGO 1 1/2 04/01/25	4.95
9	STM 0 08/04/25 CFD	4.86
10	SPMIM 2 7/8 09/11/29 CFD	4.83