

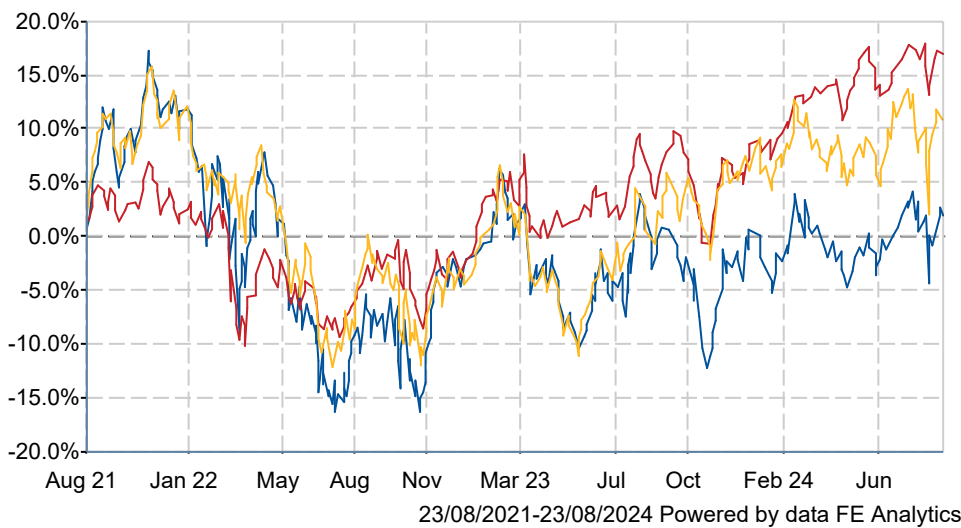
Mobius Mobius Investment Trust Plc

ORD 1P

What is the Fund's objective?

The Company's investment objective is to achieve long-term capital growth and income returns predominantly through investment in a diversified portfolio of companies exposed directly or indirectly to emerging or frontier markets.

Cumulative Performance




	3m	6m	1yr	3yrs	5yrs
Mobius Mobius Investment Trust Plc ORD 1P	+1.9	-1.6	+3.6	+1.9	+59.6
Global Emerging Markets	+0.7	+3.3	+11.4	+16.9	+33.0
NAV	+1.5	-0.1	+10.6	+10.8	+73.8
Rank within sector	4 / 10	7 / 10	8 / 10	5 / 10	2 / 10
Quartile	2	3	4	2	1

Fund Information

Sector	Global Emerging Markets
Asset Class	Equity
Launch Date	01-Oct-2018
Fund Size	£158.1m / \$208.6m (22-Aug-2024)
Fund Manager	Frostrow Capital LLP

How does FE fundinfo rate this fund?

FE fundinfo Crown Rating	
Risk Score	147

Investment Details

Initial Charge	n/a
Annual Charges	1.00%
Note to charges	n/a
Minimum Initial Investment	£ 1,000
Minimum Additional Investment	n/a
Dividend Policy	n/a
Management Contract	n/a

Prices

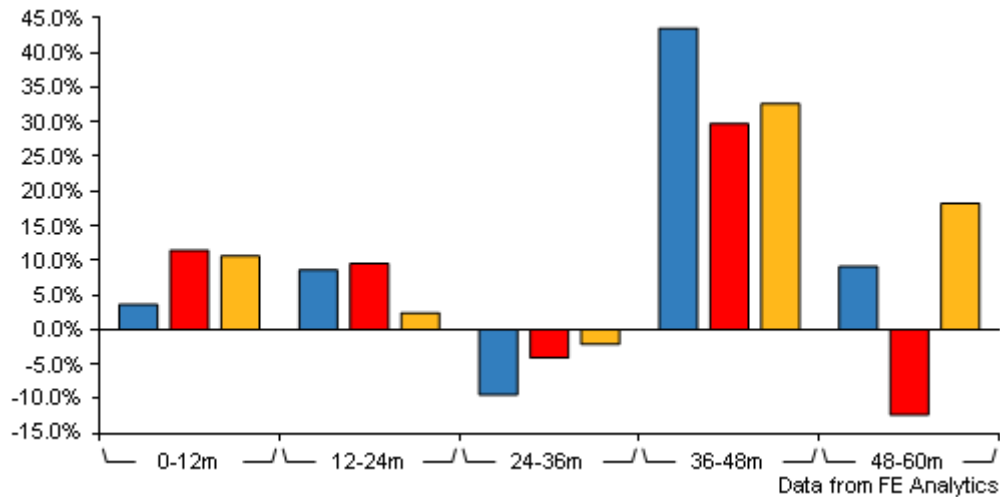
Unit Type	INC
Mid	137.50(GBX)
Price Date	23 Aug 2024
Yield	0.91
Discount	-7.80
Diluted NAV	
- Estimate	149.13
- Last Published	149.13 (22-Aug-2024)

Codes

Citicode	PGMV
SEDOL	BFZ7R98
ISIN	GB00BFZ7R980
TIDM	MMIT

Mobius Mobius Investment Trust Plc

ORD 1P



	0-12m	12m-24m	24m-36m	36m-48m	48m-60m
Mobius Mobius Investment Trust Plc ORD 1P	+3.6	+8.6	-9.4	+43.5	+9.1
Global Emerging Markets	+11.4	+9.5	-4.1	+29.7	-12.3
NAV	+10.6	+2.4	-2.1	+32.6	+18.2
Rank within sector	8 / 10	4 / 10	4 / 10	1 / 10	1 / 10
Quartile	4	2	2	1	1

All prices in Pence Sterling (GBX) unless otherwise specified. Price total return performance figures are calculated using closing mid prices and with net income (dividends) reinvested. NAV total return performance figures are calculated using fully diluted (where applicable) daily estimated NAV figures from Thomson Financial Datastream. Performance figures are shown in Pound Sterling (GBP).

Contact Details

Address Mobius Capital Partners, Thomas House, 84 Eccleston Square, London SW1V 1PX

Telephone numbers 44 (0) 203 948 15 48 (Main Number)

Website www.mobiuscapitalpartners.com

Email enquiries@mobiuscapitalpartners.com

Mobius Mobius Investment Trust Plc

ORD 1P

Asset Allocation (30 Jun 2024)

Rank	Asset Classes	%
1	Taiwanese Equities	26.00
2	Indian Equities	20.10
3	South Korean Equities	12.00
4	Turkish Equities	10.50
5	Brazilian Equities	10.20
6	UK Equities	4.70
7	US Equities	3.80
8	South African Equities	2.90
9	African Equity	2.80
10	Others	7.00



Powered by data from FE fundinfo

Regional Breakdown (30 Jun 2024)

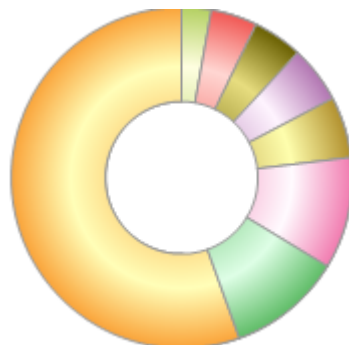
Rank	Regions	%
1	Taiwan	26.00
2	India	20.10
3	South Korea	12.00
4	Turkey	10.50
5	Brazil	10.20
6	UK	4.70
7	United States	3.80
8	South Africa	2.90
9	China	2.80
10	Others	7.00



Powered by data from FE fundinfo

Sector Breakdown (30 Jun 2024)

Rank	Sectors	%
1	Technology	55.50
2	Health Care	10.80
3	Consumer Discretionary	10.60
4	Industrials	5.80
5	Consumer Staples	5.40
6	Cash	4.70
7	Financials	4.40
8	Communications	2.80



Powered by data from FE fundinfo

Top Holdings (30 Jun 2024)

Rank	Largest Holdings	%
1	Classys	5.60
2	Mavi Giyim Sanayi Ve Ticaret	5.00

Mobius Mobius Investment Trust Plc

ORD 1P

3	E Ink	4.70
4	TOTVS	4.60
5	Park Systems	4.50
6	Elite Material	4.50
7	360 One Wam	4.30
8	Persistent Systems	4.20
9	EPAM Systems	3.80
10	Apollo Tubes	3.70