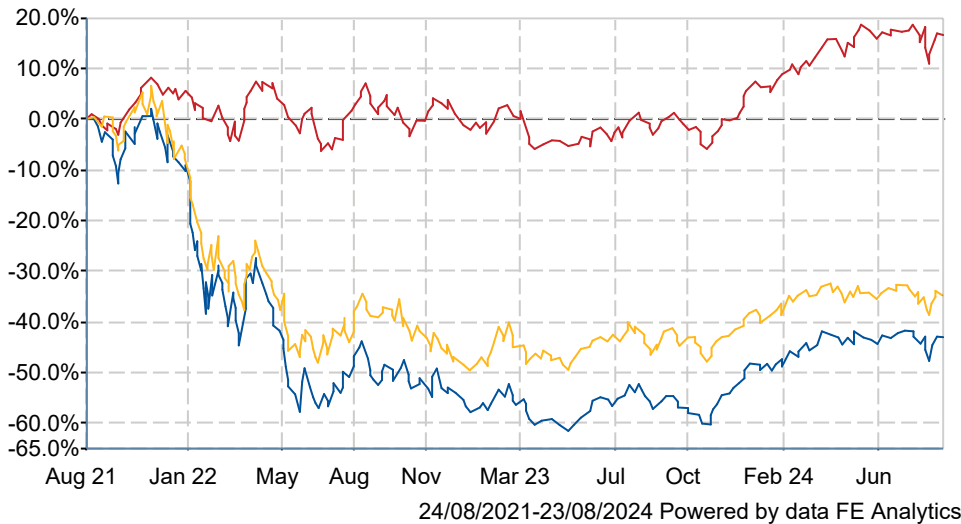





## Baillie Gifford US Growth Trust PLC Ord GBP0.01

### What is the Fund's objective?

The Trust aims to produce long-term capital growth by investing predominantly in equities of companies which are incorporated, domiciled or conducting a significant portion of their business in the United States of America. Up to a maximum of 50% of assets may be invested in companies not listed on a public market (measured at time of purchase).


### Cumulative Performance



	3m	6m	1yr	3yrs	5yrs
 Baillie Gifford US Growth Trust PLC Ord GBP0.01	+0.9	+4.9	+32.2	-42.3	+40.0
 North America	-1.1	+5.7	+18.9	+17.4	+69.5
 NAV	+0.0	+1.4	+17.6	-34.3	+61.6
Rank within sector	2 / 7	6 / 7	1 / 7	7 / 7	5 / 7
Quartile	1	4	1	4	3

Sector	North America
Asset Class	Equity
Launch Date	23-Mar-2018
Fund Size	£577.1m / \$761.4m (23-Aug-2024)
Fund Manager	Gary Robinson Kirsty Gibson

### How does FE fundinfo rate this fund?

FE fundinfo Crown Rating	
Risk Score	207

### Investment Details

Initial Charge	n/a
Annual Charges	0.57%
Note to charges	n/a
Minimum Initial Investment	n/a
Minimum Additional Investment	n/a
Dividend Policy	n/a

### Management Contract

n/a

### Prices

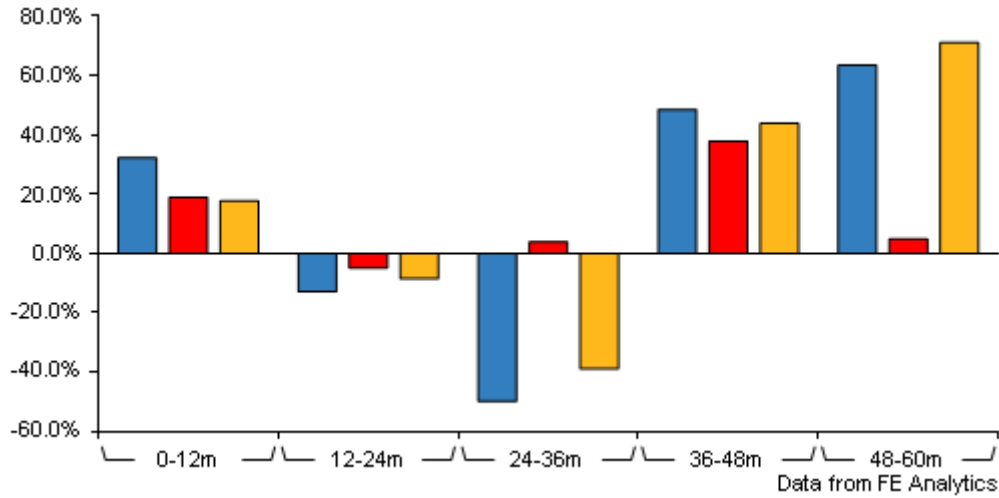
Unit Type	INC
Mid	197.00(GBX)
Price Date	23 Aug 2024
Yield	0.00
Discount	-10.59
Diluted NAV	
- Estimate	220.33
- Last Published	220.33 (22-Aug-2024)

### Codes

Citicode	OR5H
SEDOL	BDFGHW4
ISIN	GB00BDFGHW41
TIDM	USA

# Baillie Gifford US Growth Trust PLC Ord GBP0.01

## Discrete Performance

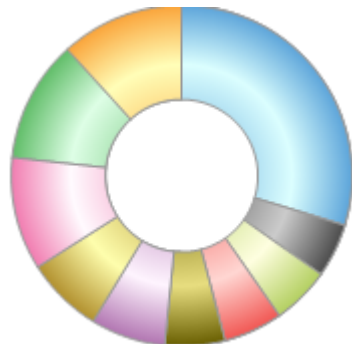


	0-12m	12m-24m	24m-36m	36m-48m	48m-60m
Baillie Gifford US Growth Trust PLC Ord GBP0.01	+32.2	-12.9	-49.9	+48.5	+63.4
North America	+18.9	-4.9	+3.8	+37.8	+4.8
NAV	+17.6	-8.5	-38.9	+43.8	+71.0
Rank within sector	1 / 7	6 / 7	7 / 7	1 / 7	1 / 7
Quartile	1	4	4	1	1

All prices in Pence Sterling (GBX) unless otherwise specified. Price total return performance figures are calculated using closing mid prices and with net income (dividends) reinvested. NAV total return performance figures are calculated using fully diluted (where applicable) daily estimated NAV figures from Thomson Financial Datastream. Performance figures are shown in Pound Sterling (GBP).

## Sector Breakdown (30 Jun 2024)

Rank	Sectors	%
1	Software	11.65
2	Information Technology	11.58
3	Media	10.73
4	Aerospace & Defence	7.32
5	Semi Conductors	7.11
6	Leisure	5.66
7	Financial Services	5.64
8	Retailers - General	5.48
9	Biotechnology/Medical	5.13
10	Others	29.70



## Top Holdings (30 Jun 2024)

Rank	Largest Holdings	%
1	Space Exploration Technologies	7.32
2	NVIDIA	7.11
3	Amazon.com	5.48
4	The Trade Desk	5.06

## Contact Details

Address Calton Square, 1 Greenside Row, Edinburgh, EH1 3AN

Telephone numbers +44 (0) 131 275 2000 (Main Number)

Website [www.bailliegifford.com](http://www.bailliegifford.com)

Email [enquiries@bailliegifford.com](mailto:enquiries@bailliegifford.com)

## Baillie Gifford US Growth Trust PLC Ord GBP0.01

Rank	Largest Holdings	%
5	Stripe	4.54
6	Meta Platforms	3.84
7	Netflix	3.45
8	Shopify	3.40
9	Brex	2.95
10	Moderna	2.74