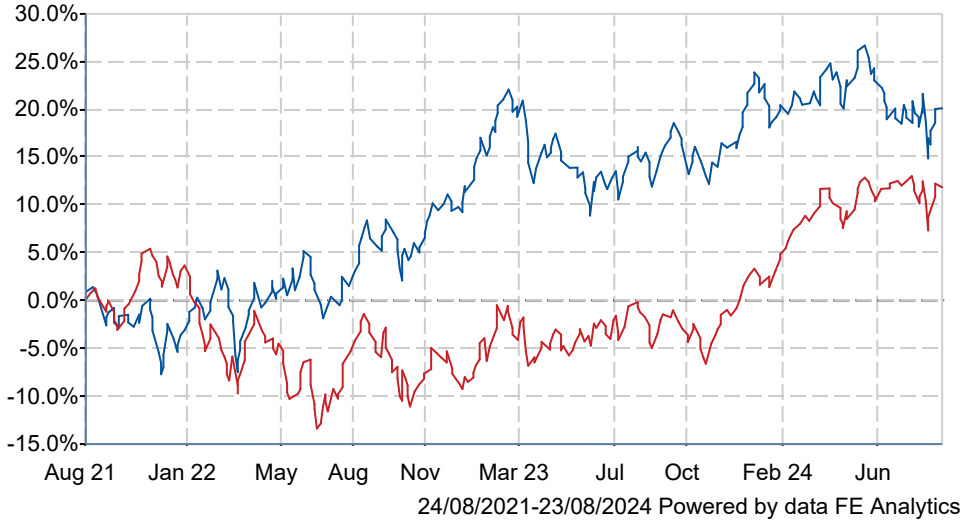


Jupiter Global Value Equity I Acc

What is the Fund's objective?

The Fund objective is to provide a return, net of fees, higher than that provided by the MSCI AC World Index over the long term (at least five years).


Cumulative Performance



	3m	6m	1yr	3yrs	5yrs
Jupiter Global Value Equity I Acc	-3.9	-0.9	+6.5	+20.2	+46.5
IA Global	-0.1	+3.6	+16.1	+12.3	+51.6
Rank within sector	526 / 563	502 / 557	504 / 546	176 / 487	259 / 412
Quartile	4	4	4	2	3

Sector	IA Global
Asset Class	Equity
Launch Date	27-Mar-2018
Fund Size	£619.2m / \$817.0m (23-Aug-2024)
Fund Manager	Ben Whitmore Dermot Murphy

How does FE fundinfo rate this fund?

FE fundinfo Crown Rating	
Risk Score	96

Investment Details

Initial Charge	0.00%
Annual Charges	n/a
Note to charges	n/a
Minimum Initial Investment	£ 1,000,000
Minimum Additional Investment	£ 50,000
Dividend Policy	Apr 01, Oct 01 (Final)

Prices

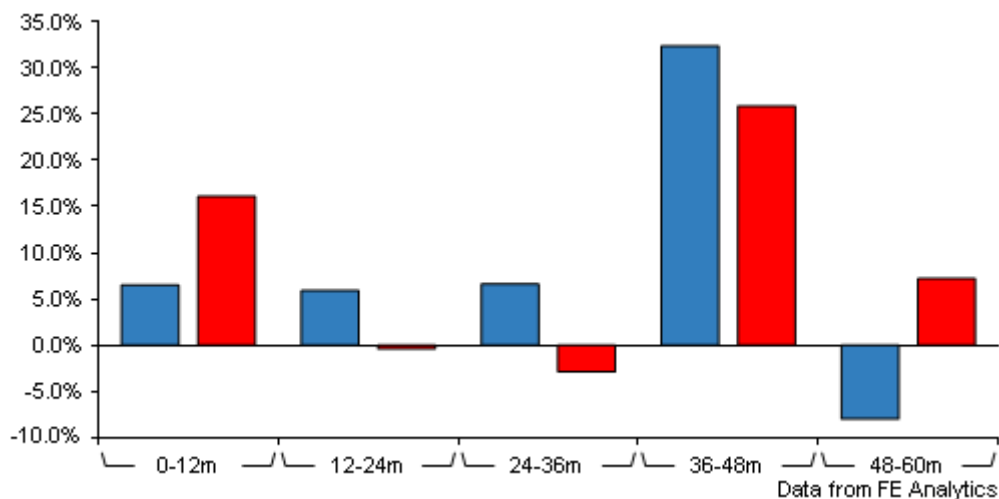
Unit Type	ACC
Mid	73.05(GBX)
Price Date	23 Aug 2024
Yield	2.39

Codes

Citicode	OPTO
SEDOL	BF5DS37
ISIN	GB00BF5DS374

Jupiter Global Value Equity I Acc

Discrete Performance



	0-12m	12m-24m	24m-36m	36m-48m	48m-60m
Jupiter Global Value Equity I Acc	+6.5	+5.9	+6.6	+32.4	-8.0
IA Global	+16.1	-0.4	-2.9	+25.9	+7.2
Rank within sector	504 / 546	62 / 522	52 / 487	71 / 442	390 / 411
Quartile	4	1	1	1	4

All prices in Pence Sterling (GBX) unless otherwise specified. Price total return performance figures are calculated on a bid price to bid price basis (mid to mid for OEICs) with net income (dividends) reinvested. Performance figures are shown in Pound Sterling (GBP).

Contact Details

Address The Zig Zag Building, 70
Victoria Street, London,
United Kingdom, SW1E 6SQ

Telephone numbers +44 (0)20 3817 1000 (Dealing
& Administration)
+44 (0)20 3817 1063 (Main
Number)

Website www.jupiteram.com

Email clientservices@jupiteram.com

Jupiter Global Value Equity I Acc

Asset Allocation (30 Apr 2024)

Rank	Asset Classes	%
1	UK Equities	21.83
2	US Equities	12.46
3	South Korean Equities	8.66
4	German Equities	8.22
5	French Equities	6.56
6	Japanese Equities	5.79
7	Hong Kong Equities	5.53
8	Preference Shares	5.41
9	Dutch Equities	4.80
10	Others	20.74



Powered by data from FE fundinfo

Regional Breakdown (30 Apr 2024)

Rank	Regions	%
1	UK	21.83
2	USA	14.78
3	Germany	11.48
4	Korea	10.81
5	France	6.56
6	Japan	5.79
7	Hong Kong	5.53
8	Netherlands	4.80
9	Denmark	3.05
10	Others	15.37



Powered by data from FE fundinfo

Sector Breakdown (30 Apr 2024)

Rank	Sectors	%
1	Consumer Staples	18.42
2	Financials	16.18
3	Consumer Discretionary	14.36
4	Industrials	13.17
5	Materials	7.13
6	Information Technology	7.01
7	Preference Shares	5.41
8	Health Care	4.03
9	Communications	3.83
10	Others	10.46



Powered by data from FE fundinfo

Top Holdings (30 Jun 2024)

Rank	Largest Holdings	%
1	A P Moller Maersk Class B	2.65
2	Imperial Brands Plc	2.48

Jupiter Global Value Equity I Acc

Rank	Largest Holdings	%
3	Nokia	2.38
4	Paramount Group Reit Inc	2.34
5	Barclays Plc	2.33
6	Covestro Ag	2.32
7	Reckitt Benckiser Group Plc	2.28
8	Barrick Gold Corp	2.27
9	Anglo American Plc	2.27
10	Sally Beauty Holdings Inc	2.22