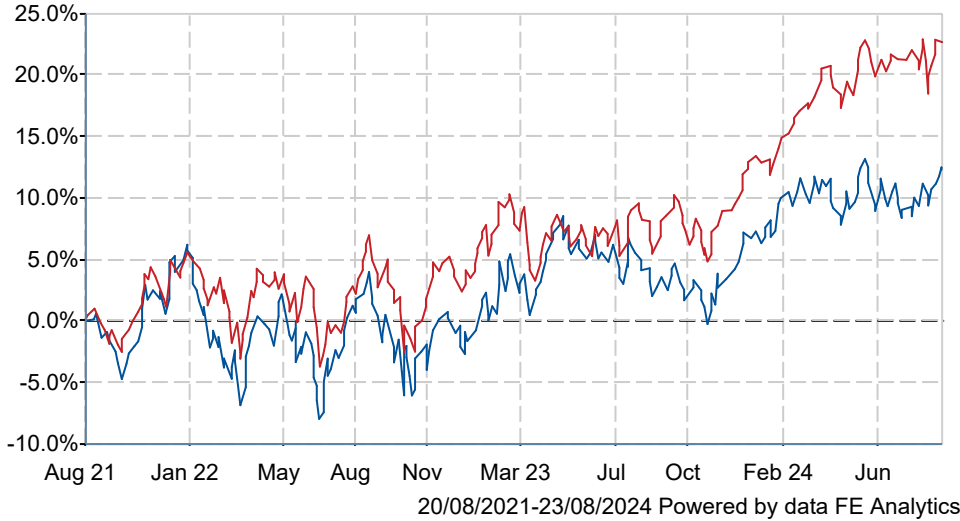


IFSL Evenlode Global Income B Acc GBP

What is the Fund's objective?

The investment objective of the Fund is to provide income and capital growth over Rolling Periods of 5 years with an emphasis on income.

Cumulative Performance




	3m	6m	1yr	3yrs	5yrs
IFSL Evenlode Global Income B Acc GBP	+1.1	+1.5	+10.4	+12.5	+34.2
IA Global Equity Income	+0.8	+4.7	+15.3	+22.3	+48.0
Rank within sector	25 / 53	49 / 53	46 / 52	43 / 48	37 / 44
Quartile	2	4	4	4	4

Fund Information

Sector	IA Global Equity Income
Asset Class	Equity
Launch Date	20-Nov-2017
Fund Size	£1,768.2m / \$2,313.7m (31-Jul-2024)
Fund Manager	Ben Peters Chris Elliott

How does FE fundinfo rate this fund?

FE fundinfo Crown Rating	
Risk Score	85

Investment Details

Initial Charge	0.00%
Annual Charges	0.84%
Note to charges	n/a
Minimum Initial Investment	£ 1,000
Minimum Additional Investment	£ 50
Dividend Policy	Mar 01 (Final), Jun 01, Sep 01, Dec 01

Prices

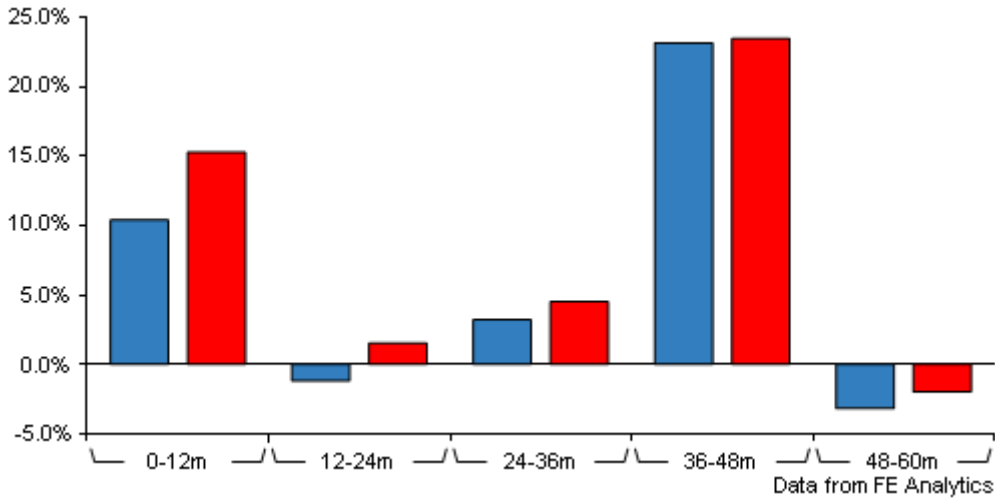
Unit Type	ACC
Mid	172.99(GBX)
Price Date	23 Aug 2024
Yield	2.15

Codes

Citicode	083U
SEDOL	BF1QMV6
ISIN	GB00BF1QMV61

IFSL Evenlode Global Income B Acc GBP

Discrete Performance



	0-12m	12m-24m	24m-36m	36m-48m	48m-60m
IFSL Evenlode Global Income B Acc GBP	+10.4	-1.2	+3.2	+23.2	-3.2
IA Global Equity Income	+15.3	+1.5	+4.5	+23.5	-2.0
Rank within sector	46 / 52	28 / 49	40 / 48	20 / 45	28 / 44
Quartile	4	3	4	2	3

All prices in Pence Sterling (GBX) unless otherwise specified. Price total return performance figures are calculated on a bid price to bid price basis (mid to mid for OEICs) with net income (dividends) reinvested. Performance figures are shown in Pound Sterling (GBP).

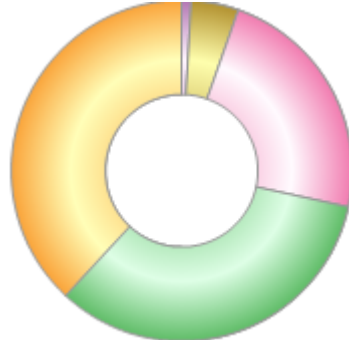
Contact Details

Address	Investment Fund Services Limited, 59, Chorley New Road, Bolton, Oxfordshire, BL1 4QP
Telephone numbers	0808 178 9321 (Main Number)
Website	www.ifslfunds.com
Email	enquiries@ifslfunds.com

IFSL Evenlode Global Income B Acc GBP

Asset Allocation (30 Jun 2024)

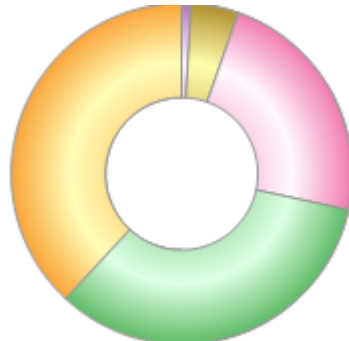
Rank	Asset Classes	%
1	Europe Equities	38.10
2	North America Equities	33.50
3	United Kingdom Equities	23.00
4	Asia-Pacific Equities	4.50
5	Cash	0.90



Powered by data from FE fundinfo

Regional Breakdown (30 Jun 2024)

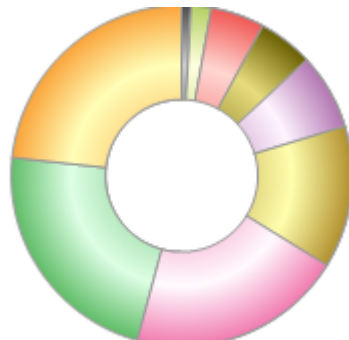
Rank	Regions	%
1	Europe	38.10
2	North America	33.50
3	United Kingdom	23.00
4	Asia-Pacific	4.50
5	Cash	0.90



Powered by data from FE fundinfo

Sector Breakdown (30 Jun 2024)

Rank	Sectors	%
1	Consumer Staples	23.30
2	Industrials	22.50
3	Health Care	20.40
4	Information Technology	13.50
5	Financials	7.20
6	Communication Services	5.20
7	Consumer Discretionary	5.10
8	Materials	1.90
9	Cash	0.90



Powered by data from FE fundinfo

Top Holdings (01 Aug 2024)

Rank	Largest Holdings	%
1	UNILEVER ORD GBP0.031111	5.29
2	MICROSOFT CORP COM STK US	3.92

IFSL Evenlode Global Income B Acc GBP

Rank	Largest Holdings	%
3	ACCENTURE PLC	3.63
4	ROCHE GENUSSSCHEINE NPV	3.56
5	EXPERIAN PLC	3.52
6	NESTLE SA CHF0.1	3.49
7	PAYCHEX INC	3.37
8	RELX PLC ORD GBP	3.36
9	MEDTRONIC PLC	3.35
10	PROCTER & GAMBLE COM STK	3.31