



Polar Capital Artificial Intelligence I Acc USD

What is the Fund's objective?

The objective of the Fund is to achieve long term capital appreciation by primarily investing in a globally diversified portfolio of companies exposed to automation and artificial intelligence.


Cumulative Performance



	3m	6m	1yr	3yrs	5yrs
 Polar Capital Artificial Intelligence I Acc USD	-1.9	+5.0	+30.2	+21.6	+100.2
 IA Global	+0.1	+3.9	+16.5	+12.7	+52.0
Rank within sector	346 / 562	225 / 556	9 / 545	137 / 487	11 / 412
Quartile	3	2	1	2	1

Sector	IA Global
Asset Class	Equity
Launch Date	06-Oct-2017
Fund Size	£680.5m / \$890.5m (22-Aug-2024)
Fund Manager	Ben Rogoff Nick Evans Xuesong Zhao

How does FE fundinfo rate this fund?

FE fundinfo Crown Rating	
Risk Score	168

Investment Details

Initial Charge	0.00%
Annual Charges	0.80%
Note to charges	Initial Charges: max.;
Minimum Initial Investment	n/a
Minimum Additional Investment	n/a
Dividend Policy	n/a

Prices

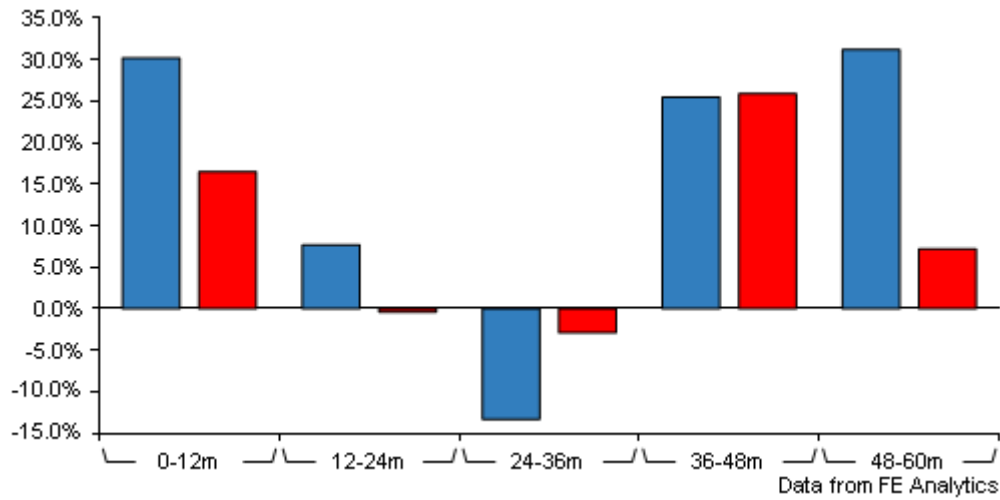
Unit Type	ACC
Mid	22.82{USD}
Price Date	22 Aug 2024
Yield	n/a

Codes

Citicode	06ZQ
SEDOL	BF0GL32
ISIN	IE00BF0GL329

Polar Capital Artificial Intelligence I Acc USD

Discrete Performance



	0-12m	12m-24m	24m-36m	36m-48m	48m-60m
■ Polar Capital Artificial Intelligence I Acc USD	+30.2	+7.7	-13.3	+25.5	+31.2
■ IA Global	+16.5	-0.4	-2.9	+25.9	+7.2
Rank within sector	9 / 545	42 / 522	422 / 487	280 / 442	22 / 411
Quartile	1	1	4	3	1

All prices in Pence Sterling (GBX) unless otherwise specified. Price total return performance figures are calculated on a bid price to bid price basis (mid to mid for OEICs) with net income (dividends) reinvested. Performance figures are shown in Pound Sterling (GBP).

Contact Details

Address 16 Palace Street, London, United Kingdom, SW1E 5JD

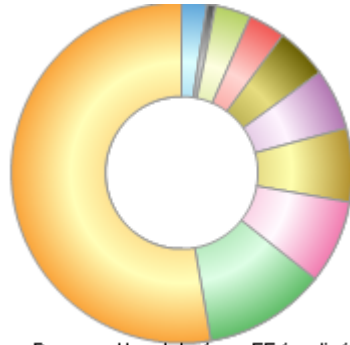
Telephone numbers +44 (0) 20 7227 2799 (Fax Number)
+44 (0) 20 7227 2700 (Main Number)

Website www.polarcapital.co.uk

Email Investor-Relations@polarcapital.co.uk

Asset Allocation (28 Jun 2024)

Rank	Asset Classes	%
1	US Equities	52.82
2	Japanese Equities	11.55
3	Taiwanese Equities	7.85
4	UK Equities	6.98
5	Swedish Equities	5.81
6	Dutch Equities	4.92
7	French Equities	3.51
8	Swiss Equities	3.39
9	Hong Kong Equities	0.80
10	Others	2.37



Powered by data from FE fundinfo

Regional Breakdown (28 Jun 2024)

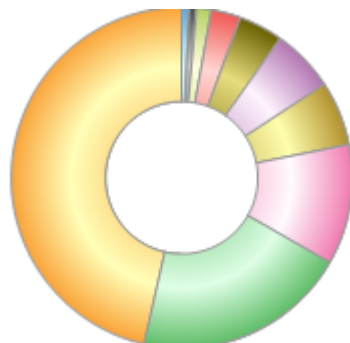
Rank	Regions	%
1	USA	52.82
2	Japan	11.55
3	Taiwan	7.85
4	UK	6.98
5	Sweden	5.81
6	Netherlands	4.92
7	France	3.51
8	Switzerland	3.39
9	Hong Kong	0.80
10	Others	2.37



Powered by data from FE fundinfo

Sector Breakdown (28 Jun 2024)

Rank	Sectors	%
1	Information Technology	46.54
2	Industrials	20.30
3	Communications	11.35
4	Consumer Discretionary	6.08
5	Financials	5.99
6	Health Care	4.22
7	Consumer Staples	2.76
8	Materials	1.38
9	Energy	0.72
10	Money Market	0.65



Powered by data from FE fundinfo

Top Holdings (28 Jun 2024)

Rank	Largest Holdings	%
1	NVIDIA CORP	6.62
2	MICROSOFT CORP	4.65

Polar Capital Artificial Intelligence I Acc USD

Rank	Largest Holdings	%
3	AMAZON.COM INC	3.59
4	MICRON TECHNOLOGY INC	3.15
5	DISCO CORP	2.81
6	WALMART INC	2.76
7	RELX PLC	2.76
8	ALPHABET INC-CL A	2.48
9	ADVANCED MICRO DEVICES	2.47
10	TAIWAN SEMICONDUCTOR MANUFAC	2.36