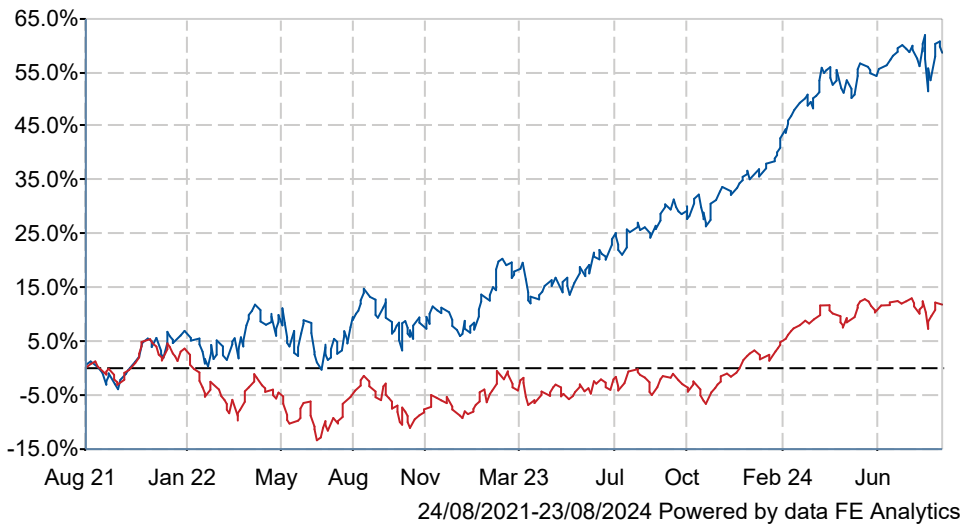


Royal London Global Equity Select M Acc

What is the Fund's objective?

The Fund's investment objective is to achieve capital growth over the long term (at least 7 years) by investing at least 80% in the shares of companies globally that are listed on a stock exchange. The Fund's performance target is to outperform, after the deduction of charges, the MSCI World Net Total Return Index GBP (the "Index") by 2.5% per annum over rolling 3-year periods. For further information on the Fund's index, please refer to the Prospectus. The Fund is actively managed.


Cumulative Performance



	3m	6m	1yr	3yrs	5yrs
Royal London Global Equity Select M Acc	+2.1	+6.2	+25.4	+59.9	+132.0
IA Global	-0.1	+3.6	+16.1	+12.3	+51.6
Rank within sector	70 / 563	83 / 557	32 / 546	5 / 487	1 / 412
Quartile	1	1	1	1	1

Sector	IA Global
Asset Class	Equity
Launch Date	10-Oct-2017
Fund Size	£644.7m / \$850.6m (31-Jul-2024)
Fund Manager	Mike Fox George Crowdy Sebastien Beguelin

How does FE fundinfo rate this fund?

Alpha Manager	Mike Fox
Rating	
FE fundinfo Crown Rating	
Risk Score	105

Investment Details

Initial Charge	n/a
Annual Charges	0.71%
Note to charges	n/a
Minimum Initial Investment	£ 100,000
Minimum Additional Investment	£ 1,000
Dividend Policy	Mar 01 (Final), Sep 01

Prices

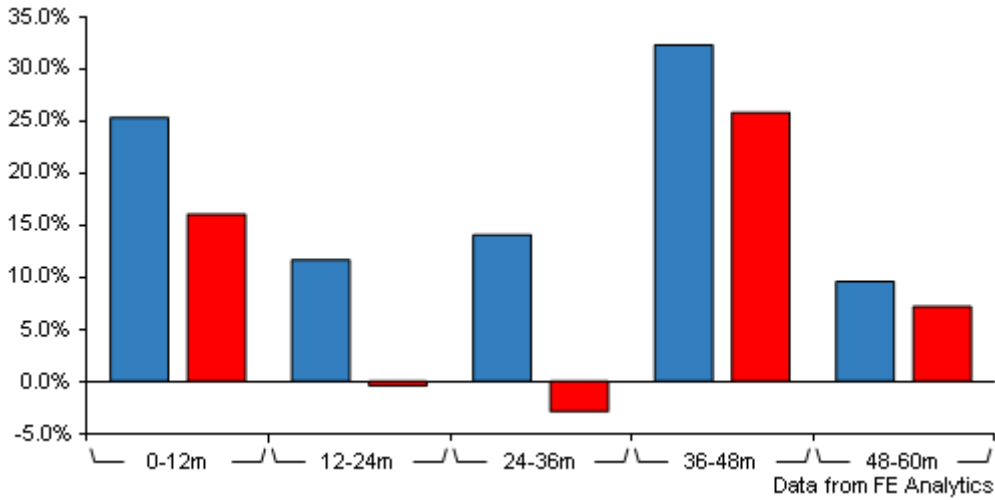
Unit Type	ACC
Mid	279.30(GBX)
Price Date	23 Aug 2024
Yield	0.64

Codes

Citicode	05ZU
SEDOL	BF93W97
ISIN	GB00BF93W972

Royal London Global Equity Select M Acc

Discrete Performance



	0-12m	12m-24m	24m-36m	36m-48m	48m-60m
■ Royal London Global Equity Select M Acc	+25.4	+11.7	+14.1	+32.4	+9.6
■ IA Global	+16.1	-0.4	-2.9	+25.9	+7.2
Rank within sector	32 / 546	6 / 522	14 / 487	70 / 442	168 / 411
Quartile	1	1	1	1	2

All prices in Pence Sterling (GBX) unless otherwise specified. Price total return performance figures are calculated on a bid price to bid price basis (mid to mid for OEICs) with net income (dividends) reinvested. Performance figures are shown in Pound Sterling (GBP).

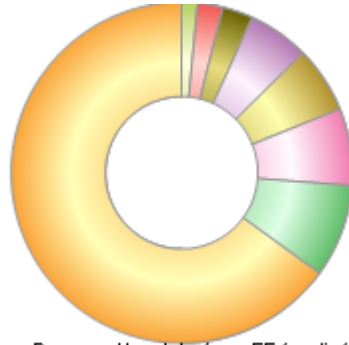
Contact Details

Address	80 Fenchurch Street, London EC3M 4BY, United Kingdom
Telephone numbers	020 7506 6500 (Main Number)
Website	www.rlam.com
Email	BDsupport@rlam.co.uk

Royal London Global Equity Select M Acc

Asset Allocation (31 Jul 2024)

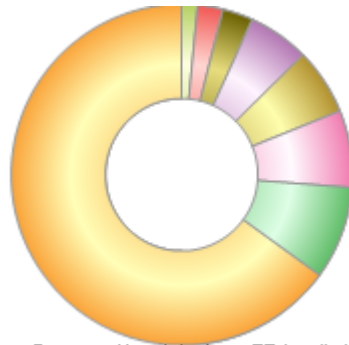
Rank	Asset Classes	%
1	US Equities	64.99
2	Eurozone Equity	8.78
3	Canadian Equities	7.34
4	Global Emerging Market Equities	6.31
5	Japanese Equities	5.83
6	UK Equities	2.87
7	European Equities	2.38
8	International Equities	1.50



Powered by data from FE fundinfo

Regional Breakdown (31 Jul 2024)

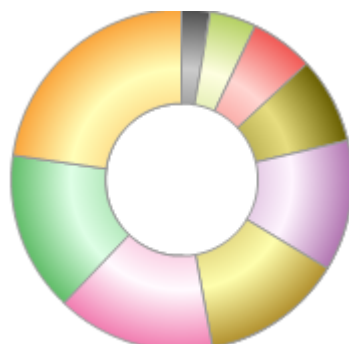
Rank	Regions	%
1	US	64.99
2	Eurozone	8.78
3	Canada	7.34
4	Emerging	6.31
5	Japan	5.83
6	UK	2.87
7	Europe - Other	2.38
8	Rest of World	1.50
9	Australia	0.00



Powered by data from FE fundinfo

Sector Breakdown (31 Jul 2024)

Rank	Sectors	%
1	Information Technology	22.70
2	Financials	15.20
3	Health Care	15.00
4	Consumer Discretionary	13.40
5	Industrials	12.40
6	Materials	8.20
7	Energy	6.00
8	Consumer Staples	4.40
9	Communication Services	2.70



Powered by data from FE fundinfo

Top Holdings (31 Jul 2024)

Rank	Largest Holdings	%
1	Microsoft Corporation	7.54
2	Amazon.com, Inc.	5.38

Royal London Global Equity Select M Acc

Rank	Largest Holdings	%
3	UnitedHealth Group Incorporated	4.62
4	NVIDIA Corporation	4.26
5	Constellation Software Inc.	4.04
6	Steel Dynamics, Inc.	3.91
7	KB Financial Group Inc.	3.50
8	Safran SA	3.44
9	Apple Inc.	3.30
10	Thor Industries, Inc.	3.06