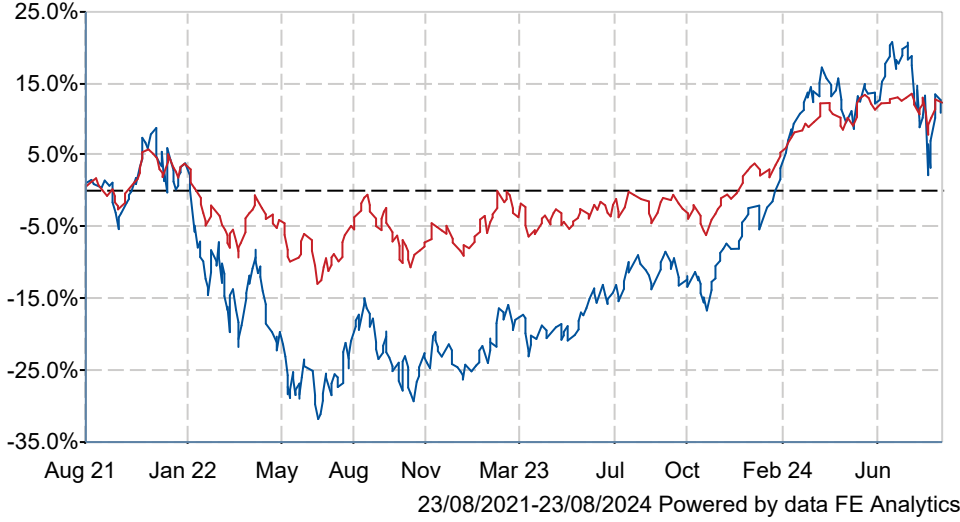


WS Blue Whale Growth I Acc GBP

What is the Fund's objective?

The Investment Objective of the Fund is to achieve capital growth over any five year period, after all costs and charges have been taken.



Cumulative Performance



	3m	6m	1yr	3yrs	5yrs
WS Blue Whale Growth I Acc GBP	-2.9	+0.1	+26.4	+10.8	+62.3
IA Global	-0.2	+3.5	+16.0	+12.3	+51.5
Rank within sector	497 / 563	470 / 557	25 / 546	288 / 487	147 / 412
Quartile	4	4	1	3	2

Sector	IA Global
Asset Class	Equity
Launch Date	11-Sep-2017
Fund Size	£1,048.9m / \$1,383.9m (23-Aug-2024)
Fund Manager	Stephen Yiu

How does FE fundinfo rate this fund?

Alpha Manager Rating	Stephen Yiu
FE fundinfo Crown Rating	
Risk Score	

Investment Details

Initial Charge	0.00%
Annual Charges	0.75%
Note to charges	Initial Charges: max.;
Minimum Initial Investment	£ 10,000,000
Minimum Additional Investment	n/a
Dividend Policy	Jun 30, Dec 31 (Final)

Prices

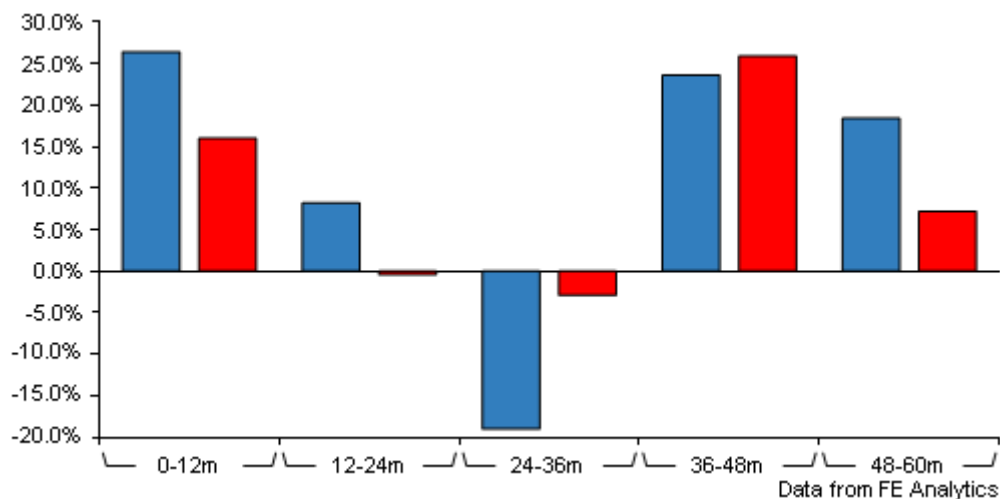
Unit Type	ACC
Mid	233.56(GBX)
Price Date	23 Aug 2024
Yield	0.00

Codes

Citicode	O1EW
SEDOL	BD6PG56
ISIN	GB00BD6PG563

WS Blue Whale Growth I Acc GBP

Discrete Performance



	0-12m	12m-24m	24m-36m	36m-48m	48m-60m
WS Blue Whale Growth I Acc GBP	+26.4	+8.2	-19.0	+23.6	+18.4
IA Global	+16.0	-0.4	-2.9	+25.9	+7.2
Rank within sector	25 / 546	30 / 522	452 / 487	308 / 442	67 / 411
Quartile	1	1	4	3	1

All prices in Pence Sterling (GBX) unless otherwise specified. Price total return performance figures are calculated on a bid price to bid price basis (mid to mid for OEICs) with net income (dividends) reinvested. Performance figures are shown in Pound Sterling (GBP).

Contact Details

Address 21-22, Grosvenor St, London W1K 4QJ

Telephone numbers 03453 073 439 (Main Number)

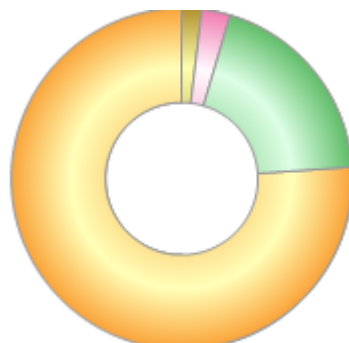
Website www.bluewhale.co.uk/

Email distribution@bluewhale.co.uk

WS Blue Whale Growth I Acc GBP

Asset Allocation (31 Jul 2024)

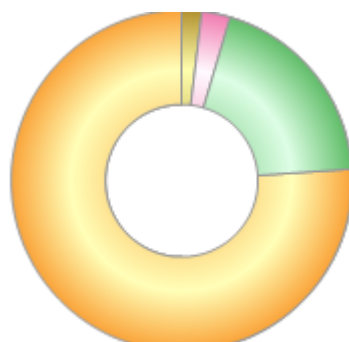
Rank	Asset Classes	%
1	North America Equities	76.10
2	Europe Equities	19.30
3	Asia Pacific Equities	2.70
4	Cash	1.90



Powered by data from FE fundinfo

Regional Breakdown (31 Jul 2024)

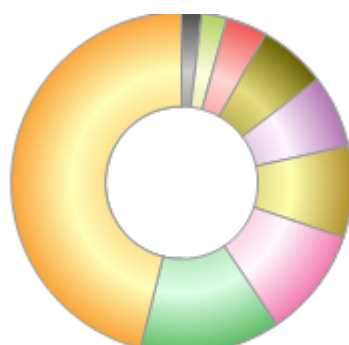
Rank	Regions	%
1	North America	76.10
2	Europe	19.30
3	Asia Pacific	2.70
4	Cash	1.90



Powered by data from FE fundinfo

Sector Breakdown (31 Jul 2024)

Rank	Sectors	%
1	Technology	46.10
2	Consumer Discretionary	13.30
3	Healthcare	10.40
4	Communication Services	8.70
5	Financials	6.90
6	Industrials	6.40
7	Consumer Staples	3.90
8	Energy & Materials	2.40
9	Cash	1.90



Powered by data from FE fundinfo

Top Holdings (31 Dec 2023)

Rank	Largest Holdings	%
1	NVIDIA Corp	8.75
2	Microsoft Corp	8.00

WS Blue Whale Growth I Acc GBP

Rank	Largest Holdings	%
3	Charles Schwab Corp	6.88
4	Lam Research Corp	6.08
5	Sartorius AG	4.88
6	Mastercard Inc	4.22
7	Visa Inc	4.11
8	Meta Platforms Inc	4.05
9	Nintendo Co Ltd	3.99
10	Danaher Corp	3.81