

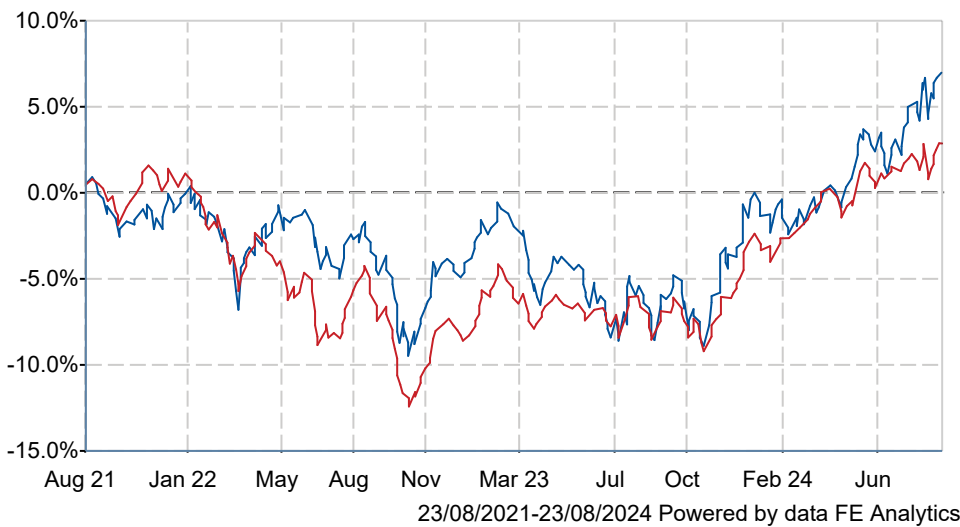
Premier Miton Diversified Income D Inc



GBP

What is the Fund's objective?

The objective of the fund is to provide income together with the potential for capital growth over the long-term, being five years or more. Five years is also the minimum recommended period for holding shares in this fund. This does not mean that the fund will achieve the objective over this, or any other, specific time period and there is a risk of loss to the original capital invested. Income will be paid four times a year as dividend distributions.

Cumulative Performance




	3m	6m	1yr	3yrs	5yrs
 Premier Miton Diversified Income D Inc GBP	+3.4	+9.1	+16.4	+6.9	+33.0
 IA Mixed Investment 20-60% Shares	+1.6	+5.0	+12.2	+2.8	+16.1
Rank within sector	7 / 192	2 / 191	5 / 188	36 / 169	6 / 149
Quartile	1	1	1	1	1

Fund Information

Sector	IA Mixed Investment 20-60% Shares
Asset Class	Mixed Asset
Launch Date	19-Jun-2017
Fund Size	£102.6m / \$135.4m (23-Aug-2024)
Fund Manager	Neil Birrell

How does FE fundinfo rate this fund?

FE fundinfo Crown Rating	
Risk Score	67

Investment Details

Initial Charge	n/a
Annual Charges	0.50%
Note to charges	n/a
Minimum Initial Investment	£ 1,000,000
Minimum Additional Investment	£ 100,000
Dividend Policy	Feb 28 (Final), May 31, Aug 31, Nov 30

Prices

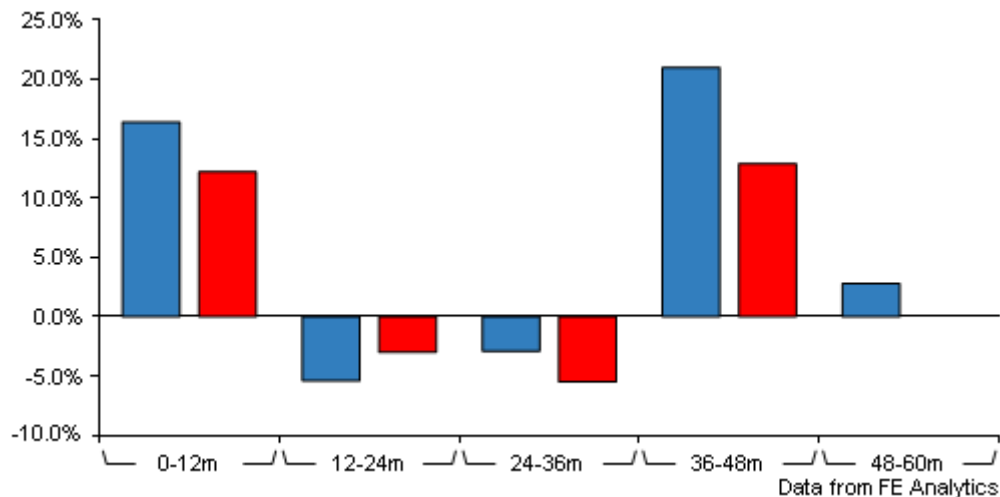
Unit Type	INC
Mid	107.50(GBX)
Price Date	23 Aug 2024
Yield	4.37

Codes

Citicode	NWBC
SEDOL	BYPDV97
ISIN	GB00BYPDV970

Premier Miton Diversified Income D Inc

GBP



	0-12m	12m-24m	24m-36m	36m-48m	48m-60m
■ Premier Miton Diversified Income D Inc GBP	+16.4	-5.4	-2.9	+21.0	+2.8
■ IA Mixed Investment 20-60% Shares	+12.2	-3.0	-5.5	+12.9	+0.0
Rank within sector	5 / 188	150 / 175	43 / 169	5 / 158	32 / 149
Quartile	1	4	1	1	1

All prices in Pence Sterling (GBX) unless otherwise specified. Price total return performance figures are calculated on a bid price to bid price basis (mid to mid for OEICs) with net income (dividends) reinvested. Performance figures are shown in Pound Sterling (GBP).

Contact Details

Address	Premier Fund Managers Ltd, Eastgate Court, High Street, Guildford, Surrey, GU1 3DE
Telephone numbers	01483 306090 (Main Number)
Website	www.premiermiton.com
Email	info@premiermiton.com

Premier Miton Diversified Income D Inc

GBP

Asset Allocation (31 Jul 2024)

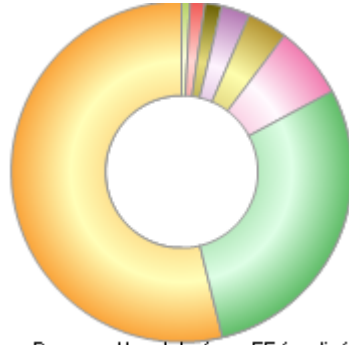
Rank	Asset Classes	%
1	UK equities	28.90
2	UK corporate bonds	19.90
3	Global Corporate Fixed Interest	12.30
4	Other alternatives	7.70
5	North American equities	6.80
6	International property shares	6.50
7	UK property shares	4.00
8	Europe ex UK equities	3.80
9	Alternative Investment Strategies	3.20
10	Others	6.90



Powered by data from FE fundinfo

Regional Breakdown (31 Jul 2024)

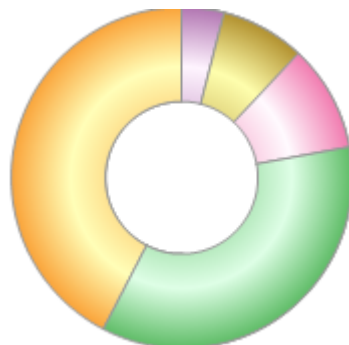
Rank	Regions	%
1	Property shares	53.85
2	UK	28.95
3	North America	6.86
4	Europe ex UK	3.82
5	Cash	2.70
6	Emerging markets	1.61
7	Asia Pacific ex Japan	1.39
8	Japan	0.82



Powered by data from FE fundinfo

Sector Breakdown (28 Jun 2024)

Rank	Sectors	%
1	Equities	42.40
2	Fixed income	35.50
3	Property shares	10.10
4	Alternative investments	8.00
5	Cash	4.00



Powered by data from FE fundinfo

Top Holdings (31 Jul 2024)

Rank	Largest Holdings	%
1	Premier Miton Strategic Monthly Income Bond C Inc	3.25
2	EURX EUR-BUND Future Sep 24	3.20

Premier Miton Diversified Income D Inc

GBP

3	Vonovia	1.23
4	TP ICAP Finance 5.25% 29/05/2026	1.22
5	Virgin Money UK 4.0% 25/09/2026	1.21
6	Athora Netherlands 7.0% Perpetual	1.11
7	XPS Pensions Group	1.09
8	TP ICAP Group	1.08
9	Games Workshop Group	1.05
10	IG Group Holdings	1.04