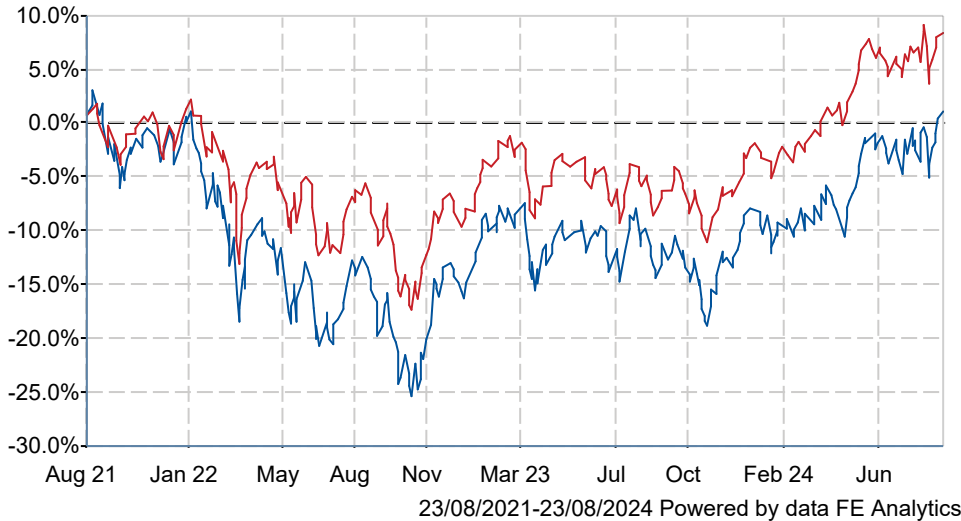




Baillie Gifford UK Equity Core B Acc

What is the Fund's objective?

The fund aims to outperform (after deduction of costs) the FTSE All Share Index by at least 1% per annum over rolling five year periods.


Cumulative Performance



	3m	6m	1yr	3yrs	5yrs
 Baillie Gifford UK Equity Core B Acc	+2.7	+9.8	+18.0	+1.1	+23.4
 IA UK All Companies	+1.0	+10.3	+18.2	+8.4	+30.8
Rank within sector	28 / 231	156 / 231	129 / 229	150 / 223	151 / 211
Quartile	1	3	3	3	3

Sector	IA UK All Companies
Asset Class	Equity
Launch Date	17-Jan-2018
Fund Size	£233.3m / \$307.8m (23-Aug-2024)
Fund Manager	Iain McCombie

How does FE fundinfo rate this fund?

FE fundinfo Crown Rating	
Risk Score	131

Investment Details

Initial Charge	0.00%
Annual Charges	0.42%
Note to charges	n/a
Minimum Initial Investment	£ 100,000
Minimum Additional Investment	n/a
Dividend Policy	Jun 30 (Final), Dec 31

Prices

Unit Type	ACC
Mid	123.40(GBX)
Price Date	23 Aug 2024
Yield	2.61

Codes

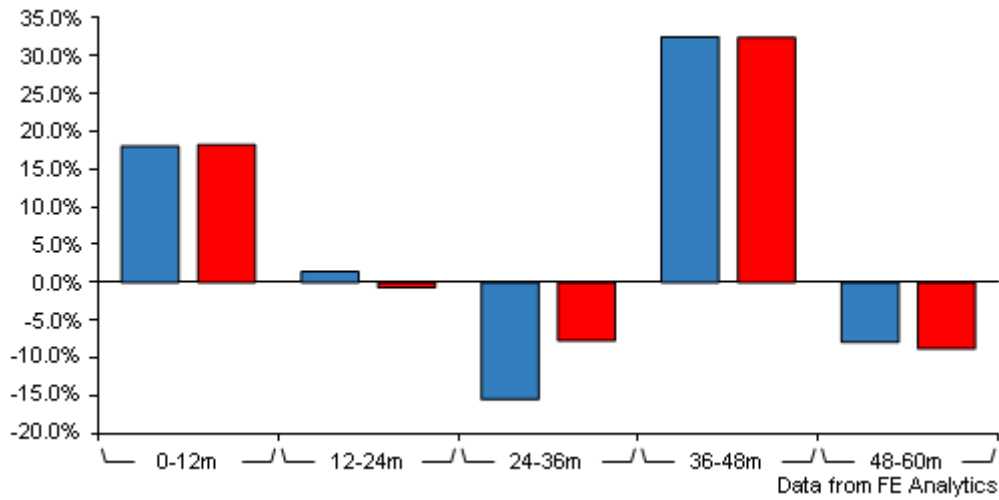
Citicode	NRY5
SEDOL	BZ3G225
ISIN	GB00BZ3G2258

Contact Details

Address	Calton Square, 1 Greenside Row, Edinburgh, EH1 3AN
Telephone numbers	+44 (0) 131 275 2000 (Main Number)
Website	www.bailliegifford.com
Email	enquiries@bailliegifford.com

Baillie Gifford UK Equity Core B Acc

Discrete Performance



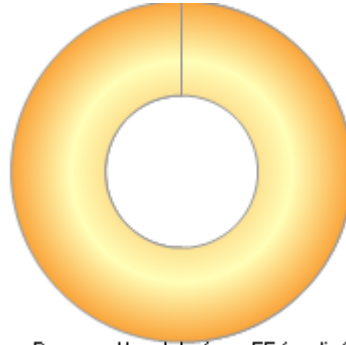
	0-12m	12m-24m	24m-36m	36m-48m	48m-60m
■ Baillie Gifford UK Equity Core B Acc	+18.0	+1.4	-15.5	+32.5	-7.9
■ IA UK All Companies	+18.2	-0.7	-7.7	+32.4	-8.8
Rank within sector	129 / 229	61 / 228	166 / 223	84 / 218	87 / 211
Quartile	3	2	3	2	2

All prices in Pence Sterling (GBX) unless otherwise specified. Price total return performance figures are calculated on a bid price to bid price basis (mid to mid for OEICs) with net income (dividends) reinvested. Performance figures are shown in Pound Sterling (GBP).

Baillie Gifford UK Equity Core B Acc

Asset Allocation (31 Jul 2024)

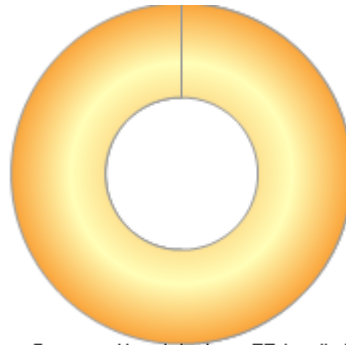
Rank	Asset Classes	%
1	UK Equity	101.32
2	Cash	-1.32



Powered by data from FE fundinfo

Regional Breakdown (31 Jul 2024)

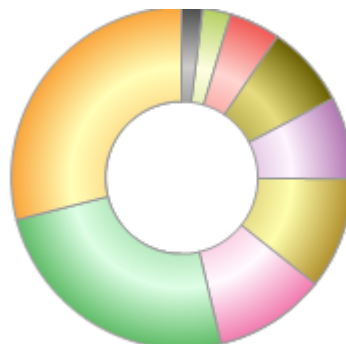
Rank	Regions	%
1	UK	101.32
2	Cash and Deposits	-1.32



Powered by data from FE fundinfo

Sector Breakdown (31 Jul 2024)

Rank	Sectors	%
1	Industrials	29.34
2	Financials	25.03
3	Consumer Discretionary	10.65
4	Consumer Staples	10.65
5	Health Care	7.91
6	Communication Services	7.89
7	Materials	4.86
8	Information Technology	2.72
9	Real Estate	1.97
10	Others	-1.02



Powered by data from FE fundinfo

Top Holdings (31 Jul 2024)

Rank	Largest Holdings	%
1	AstraZeneca	4.91
2	Bunzl	4.21

Baillie Gifford UK Equity Core B Acc

Rank	Largest Holdings	%
3	Marks and Spencer Group	3.86
4	Unilever	3.80
5	Rio Tinto	3.79
6	RELX	3.72
7	Inchcape	3.48
8	Auto Trader	3.36
9	Legal & General	3.25
10	Howden Joinery	3.17