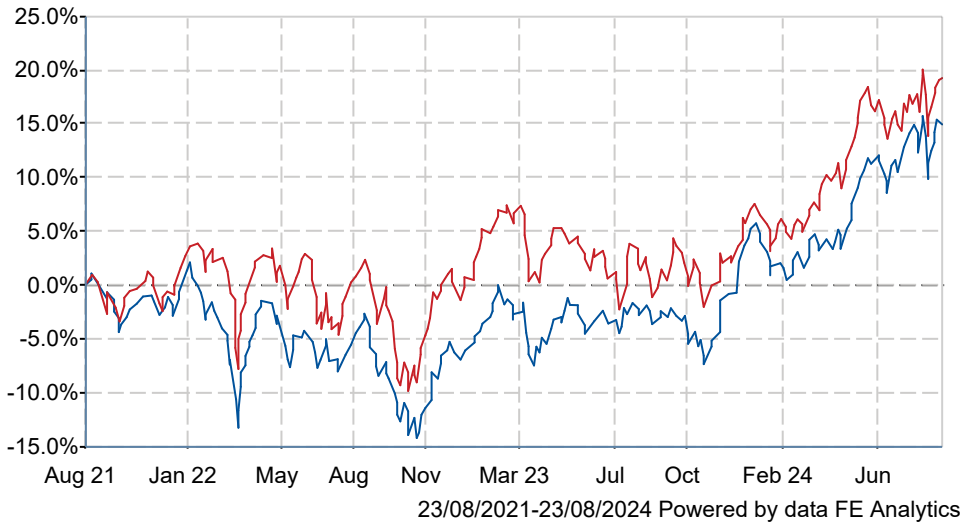


WS Gresham House UK Multi Cap Income C Acc

What is the Fund's objective?

To achieve income with the potential for capital growth, over any five year period, after all costs and charges have been taken. Capital invested is at risk and there is no guarantee the objective will be achieved over any time period.

Cumulative Performance





	3m	6m	1yr	3yrs	5yrs
WS Gresham House UK Multi Cap Income C Acc	+2.6	+11.8	+19.5	+14.9	+62.0
IA UK Equity Income	+1.6	+12.7	+20.1	+19.2	+37.1
Rank within sector	18 / 75	49 / 75	45 / 75	53 / 74	1 / 72
Quartile	1	3	3	3	1

Fund Information

Sector	IA UK Equity Income
Asset Class	Equity
Launch Date	30-Jun-2017
Fund Size	£887.7m / \$1,171.3m (21-Aug-2024)
Fund Manager	Brendan Gulston Ken Wotton

How does FE fundinfo rate this fund?

Alpha Manager Rating	Brendan Gulston
FE fundinfo Crown Rating	
Risk Score	

Investment Details

Initial Charge	n/a
Annual Charges	0.75%
Note to charges	n/a
Minimum Initial Investment	£ 10,000
Minimum Additional Investment	£ 1,000
Dividend Policy	Mar 31 (Final), Jun 30, Sep 30, Dec 31

Prices

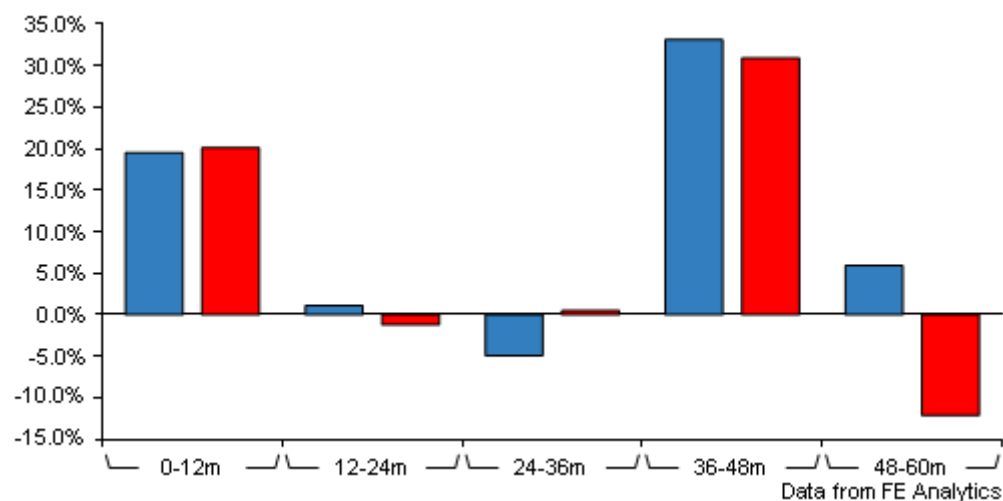
Unit Type	ACC
Mid	187.62(GBX)
Price Date	23 Aug 2024
Yield	3.94

Codes

Citicode	NR3R
SEDOL	BYXVGS7
ISIN	GB00BYXVGS75

WS Gresham House UK Multi Cap

Income C Acc



	0-12m	12m-24m	24m-36m	36m-48m	48m-60m
WS Gresham House UK Multi Cap Income C Acc	+19.5	+1.1	-4.9	+33.1	+5.9
IA UK Equity Income	+20.1	-1.2	+0.5	+30.9	-12.1
Rank within sector	45 / 75	19 / 75	61 / 74	25 / 72	2 / 72
Quartile	3	1	4	2	1

All prices in Pence Sterling (GBX) unless otherwise specified. Price total return performance figures are calculated on a bid price to bid price basis (mid to mid for OEICs) with net income (dividends) reinvested. Performance figures are shown in Pound Sterling (GBP).

Contact Details

Address 80 Cheapside London, EC2V 6EE

Telephone numbers 44 20 3837 6276 (Main Number)

Website www.greshamhouse.com

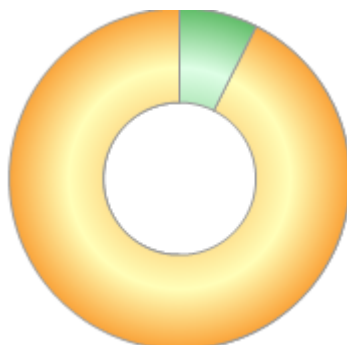
Email info@greshamhouse.com

WS Gresham House UK Multi Cap

Income C Acc

Asset Allocation (31 May 2024)

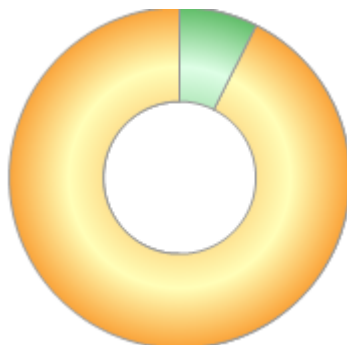
Rank	Asset Classes	%
1	UK Equities	92.60
2	Money Market	7.40



Powered by data from FE fundinfo

Regional Breakdown (31 May 2024)

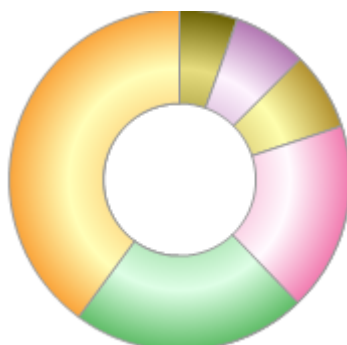
Rank	Regions	%
1	United Kingdom	92.60
2	Cash	7.40



Powered by data from FE fundinfo

Sector Breakdown (31 May 2024)

Rank	Sectors	%
1	Financials	39.90
2	Consumer	22.30
3	Business services	17.90
4	Cash	7.40
5	Healthcare & education	7.00
6	TMT	5.50



Powered by data from FE fundinfo

Top Holdings (31 May 2024)

Rank	Largest Holdings	%
1	XPS Pensions Group	4.10

WS Gresham House UK Multi Cap

Income C Acc

2	Intermediate Capital Group	4.00
3	GlaxoSmithKline	3.80
4	Ricardo	3.40
5	B&M	3.40
6	Moneysupermarket	3.30
7	Telecom Plus	3.30
8	Schroders	3.10
9	Domino's Pizza	3.10
10	3i	3.00