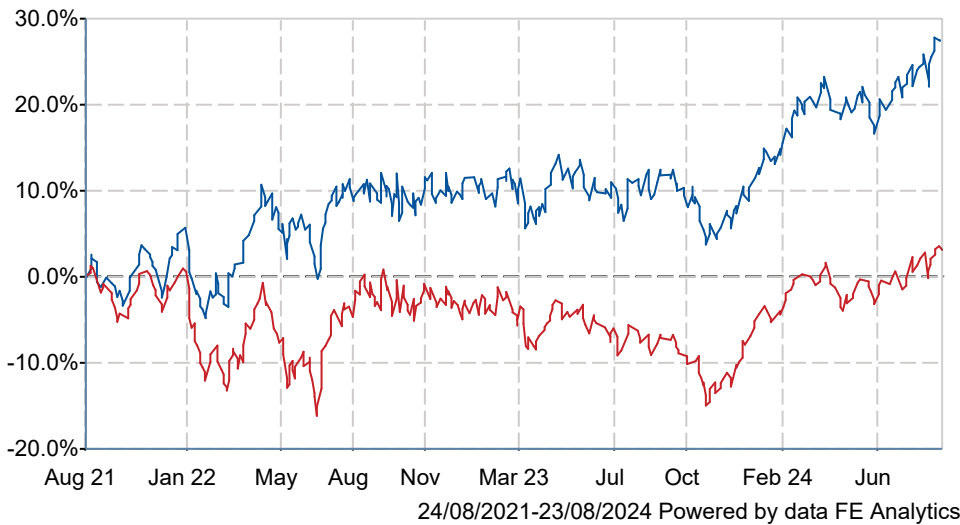




Polar Capital Healthcare Blue Chip I Acc GBP

What is the Fund's objective?

The objective of the Fund is to achieve long term capital appreciation by investing in a globally diversified portfolio of healthcare companies.

Cumulative Performance




	3m	6m	1yr	3yrs	5yrs
 Polar Capital Healthcare Blue Chip I Acc GBP	+7.0	+5.8	+15.7	+27.5	+64.2
 IA Healthcare	+4.3	+3.2	+12.3	+3.1	+42.5
Rank within sector	2 / 21	4 / 21	6 / 19	2 / 18	6 / 13
Quartile	1	1	2	1	2

Fund Information

Sector	IA Healthcare
Asset Class	Equity
Launch Date	11-Sep-2014
Fund Size	£224.6m / \$296.3m (22-Aug-2024)
Fund Manager	James Douglas

How does FE fundinfo rate this fund?

Alpha Manager Rating	James Douglas
FE fundinfo Crown Rating	
Risk Score	109

Investment Details

Initial Charge	0.00%
Annual Charges	0.85%
Note to charges	Initial Charges: max.;
Minimum Initial Investment	n/a
Minimum Additional Investment	n/a
Dividend Policy	Jan 01 (Final)

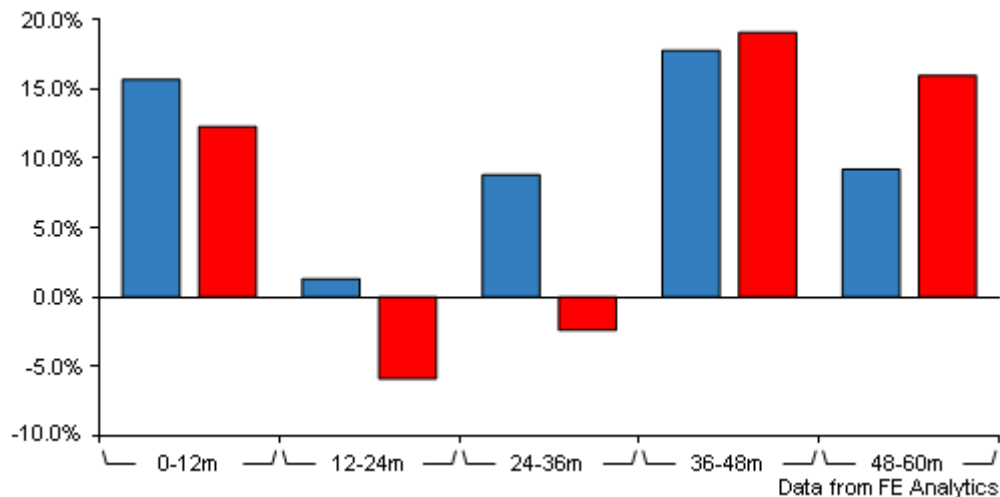
Prices

Unit Type	ACC
Mid	17.60(GBP)
Price Date	22 Aug 2024
Yield	n/a

Codes

Citicode	KQIE
SEDOL	BPRBXV2
ISIN	IE00BPRBXV28

Polar Capital Healthcare Blue Chip I Acc GBP



	0-12m	12m-24m	24m-36m	36m-48m	48m-60m
■ Polar Capital Healthcare Blue Chip I Acc GBP	+15.7	+1.3	+8.8	+17.8	+9.2
■ IA Healthcare	+12.3	-5.9	-2.4	+19.1	+16.0
Rank within sector	6 / 19	2 / 19	3 / 18	11 / 15	12 / 13
Quartile	2	1	1	3	4

All prices in Pence Sterling (GBX) unless otherwise specified. Price total return performance figures are calculated on a bid price to bid price basis (mid to mid for OEICs) with net income (dividends) reinvested. Performance figures are shown in Pound Sterling (GBP).

Contact Details

Address 16 Palace Street, London, United Kingdom, SW1E 5JD

Telephone numbers +44 (0) 20 7227 2799 (Fax Number)
+44 (0) 20 7227 2700 (Main Number)

Website www.polarcapital.co.uk

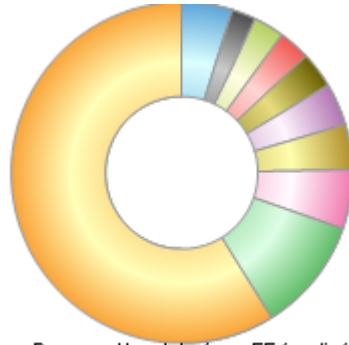
Email Investor-Relations@polarcapital.co.uk

Polar Capital Healthcare Blue Chip I Acc

GBP

Asset Allocation (28 Jun 2024)

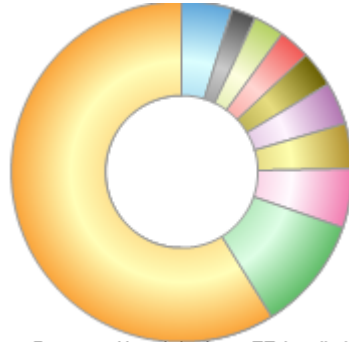
Rank	Asset Classes	%
1	US Equities	58.80
2	Swiss Equities	10.84
3	French Equities	5.55
4	Belgian Equities	4.32
5	Australian Equities	4.04
6	Swedish Equities	3.44
7	Irish Equities	3.04
8	Danish Equities	2.87
9	Japanese Equities	2.27
10	Others	4.83



Powered by data from FE fundinfo

Regional Breakdown (28 Jun 2024)

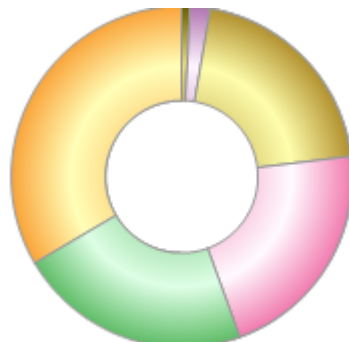
Rank	Regions	%
1	USA	58.80
2	Switzerland	10.84
3	France	5.55
4	Belgium	4.32
5	Australia	4.04
6	Sweden	3.44
7	Ireland	3.04
8	Denmark	2.87
9	Japan	2.27
10	Others	4.83



Powered by data from FE fundinfo

Sector Breakdown (28 Jun 2024)

Rank	Sectors	%
1	Biotechnology/Medical	33.45
2	Pharmaceuticals	22.07
3	Healthcare & Medical Products	21.37
4	Health Care	20.35
5	Metal Products	1.92
6	Money Market	0.83



Powered by data from FE fundinfo

Top Holdings (28 Jun 2024)

Rank	Largest Holdings	%
1	ELI LILLY & CO	8.80
2	UNITEDHEALTH GROUP INC	7.85

Polar Capital Healthcare Blue Chip I Acc GBP

3	ABBVIE INC	5.86
4	Novartis R CHF0.50	5.19
5	UCB SA	4.32
6	CSL LTD	4.04
7	SANOFI-AVENTIS	3.77
8	ANTHEM INC	3.73
9	BECTON DICKINSON AND CO	3.63
10	SWEDISH ORPHAN BIOVITRUM AB	3.44