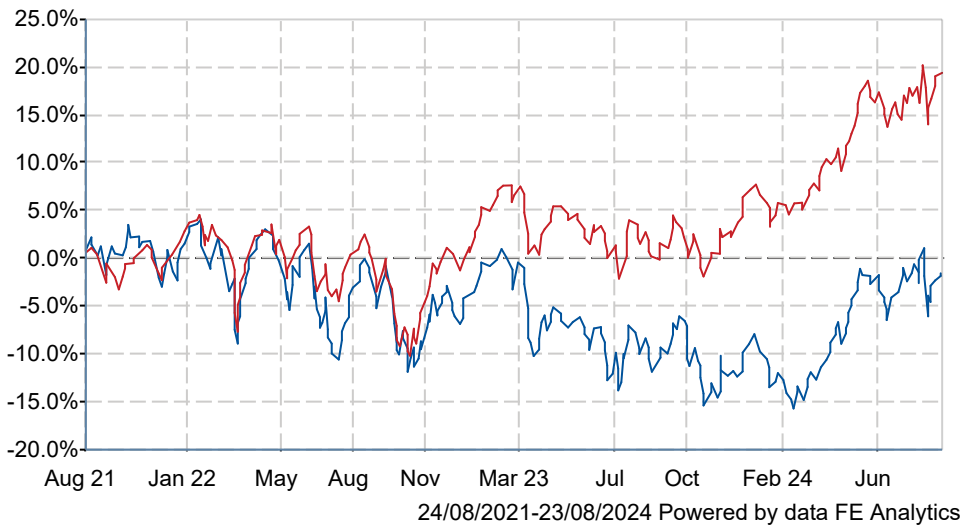


abrdn UK Income Unconstrained Equity Platform 1 Acc GBP

What is the Fund's objective?

To generate income and some growth over the long term (5 years or more) by investing in UK equities (company shares). Performance Target: To deliver a yield greater than that of and achieve a return in excess of the FTSE All Share Index over a rolling five year period (before charges). There is no certainty or promise that the Performance Target will be achieved. Performance Comparator: Investment Association UK Equity Income Sector Average. The FTSE All Share Index (the "Index") is a representative index of the UK stock market. The Investment Association UK Equity Income Sector (the "Sector") is a representative group of investment funds with a focus on UK equities with the aim of deliver a premium yield.


Cumulative Performance



| | 3m | 6m | 1yr | 3yrs | 5yrs |
|-----------------------------------------------------------|---------|---------|---------|---------|---------|
| ■ abrdn UK Income Unconstrained Equity Platform 1 Acc GBP | +0.3 | +14.6 | +11.7 | -1.2 | +7.8 |
| ■ IA UK Equity Income | +1.6 | +12.7 | +20.1 | +19.2 | +37.1 |
| Rank within sector | 69 / 75 | 16 / 75 | 74 / 75 | 70 / 74 | 72 / 72 |
| Quartile | 4 | 1 | 4 | 4 | 4 |

| | |
|--------------|-------------------------------------|
| Sector | IA UK Equity Income |
| Asset Class | Equity |
| Launch Date | 22-Feb-2007 |
| Fund Size | £187.2m / \$247.1m (12-Jul-2024) |
| Fund Manager | Thomas Moore |

How does FE fundinfo rate this fund?

| | |
|--------------------------|-------------------------------------------------------------------------------------|
| FE fundinfo Crown Rating |  |
| Risk Score | 134 |

Investment Details

| | |
|-------------------------------|------------------------|
| Initial Charge | 0.00% |
| Annual Charges | 1.00% |
| Note to charges | Initial Charges: max.; |
| Minimum Initial Investment | £ 1,000,000 |
| Minimum Additional Investment | £ 50,000 |
| Dividend Policy | Apr 30 (Final), Oct 31 |

Prices

| | |
|------------|-------------|
| Unit Type | ACC |
| Mid | 105.00(GBX) |
| Price Date | 23 Aug 2024 |
| Yield | 5.36 |

Codes

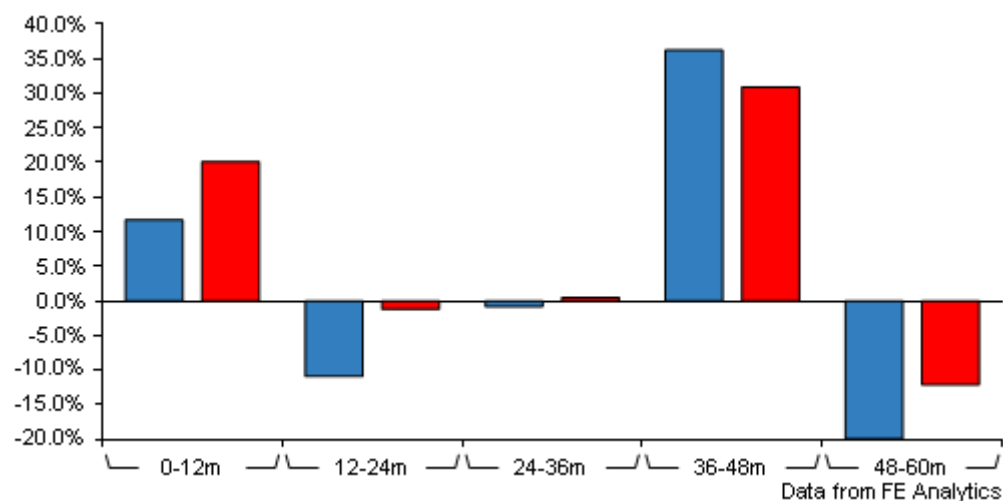
| | |
|----------|--------------|
| Citicode | 10GW |
| SEDOL | B79X967 |
| ISIN | GB00B79X9673 |

Contact Details

| | |
|-------------------|--------------------------------------------------------------------------------------------|
| Address | Aberdeen Standard Fund Managers Limited, Bow Bells House, 1 Bread Street, London, EC4M 9HH |
| Telephone numbers | 0345 113 6966 (Main Number) |
| Website | www.aberdeenstandard.com |

abrdn UK Income Unconstrained Equity Platform 1 Acc GBP

Discrete Performance



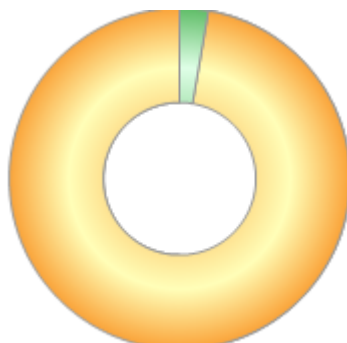
| | 0-12m | 12m-24m | 24m-36m | 36m-48m | 48m-60m |
|-------------------------------------------|---------|---------|---------|---------|---------|
| abrdn UK Income | | | | | |
| ■ Unconstrained Equity Platform 1 Acc GBP | +11.7 | -10.9 | -0.8 | +36.2 | -19.9 |
| ■ IA UK Equity Income | +20.1 | -1.2 | +0.5 | +30.9 | -12.1 |
| Rank within sector | 74 / 75 | 72 / 75 | 51 / 74 | 13 / 72 | 69 / 72 |
| Quartile | 4 | 4 | 3 | 1 | 4 |

All prices in Pence Sterling (GBX) unless otherwise specified. Price total return performance figures are calculated on a bid price to bid price basis (mid to mid for OEICs) with net income (dividends) reinvested. Performance figures are shown in Pound Sterling (GBP).

abrdn UK Income Unconstrained Equity Platform 1 Acc GBP

Asset Allocation (31 Jul 2024)

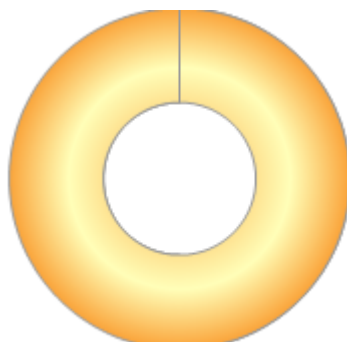
| Rank | Asset Classes | % |
|------|---------------|-------|
| 1 | UK Equities | 97.30 |
| 2 | Cash | 2.70 |
| | | |
| | | |
| | | |
| | | |
| | | |
| | | |
| | | |



Powered by data from FE fundinfo

Regional Breakdown (31 Jul 2024)

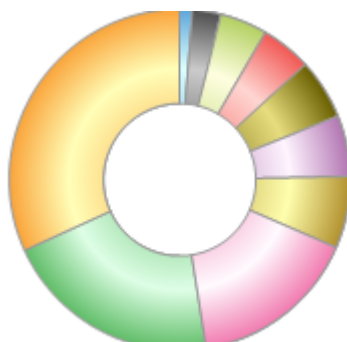
| Rank | Regions | % |
|------|-------------------------|------|
| 1 | Cash & Cash Equivalents | 2.72 |
| | | |
| | | |
| | | |
| | | |
| | | |
| | | |
| | | |
| | | |



Powered by data from FE fundinfo

Sector Breakdown (30 Jun 2024)

| Rank | Sectors | % |
|------|------------------------|-------|
| 1 | Financials | 31.80 |
| 2 | Energy | 20.70 |
| 3 | Materials | 16.00 |
| 4 | Utilities | 6.80 |
| 5 | Industrials | 5.80 |
| 6 | Consumer Staples | 5.70 |
| 7 | Other | 4.80 |
| 8 | Consumer Discretionary | 4.50 |
| 9 | Real Estate | 2.70 |
| 10 | Cash | 1.20 |



Powered by data from FE fundinfo

Top Holdings (28 Jun 2024)

| Rank | Largest Holdings | % |
|------|------------------|------|
| 1 | SHELL | 6.89 |
| 2 | Natwest Group | 6.43 |

abrdrn UK Income Unconstrained Equity Platform 1 Acc GBP

| Rank | Largest Holdings | % |
|------|---------------------|------|
| 3 | BP | 6.39 |
| 4 | Barclays | 6.01 |
| 5 | Glencore | 5.58 |
| 6 | Imperial Brands | 4.65 |
| 7 | National Grid | 4.57 |
| 8 | Anglo American | 4.55 |
| 9 | Hargreaves Lansdown | 4.39 |
| 10 | DS Smith | 3.75 |