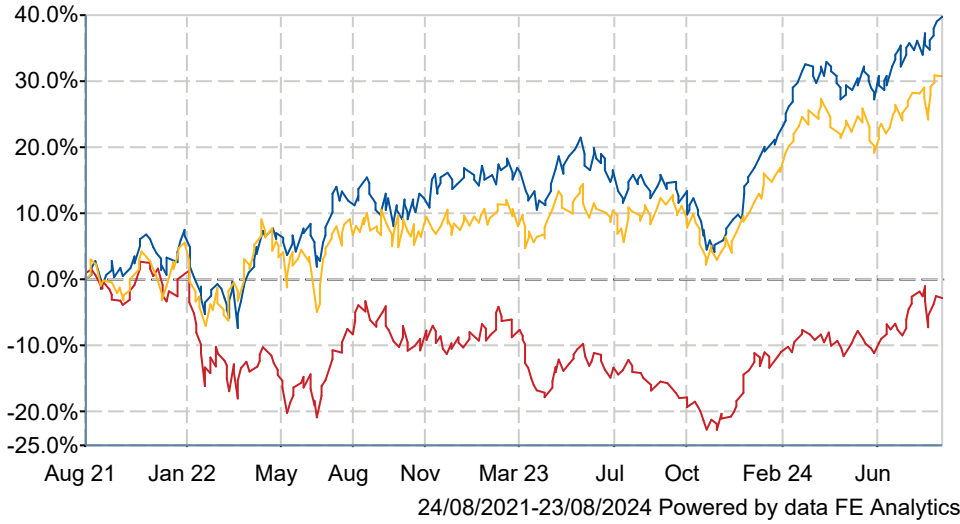


Polar Capital Global Healthcare Trust PLC Ordinary Share Class Ord 25P

What is the Fund's objective?

The Company's current investment objective is to generate capital growth and income by investing in a global portfolio of healthcare stocks.

Cumulative Performance



	3m	6m	1yr	3yrs	5yrs
■ Polar Capital Global Healthcare Trust PLC Ordinary Share Class Ord 25P	+7.4	+8.3	+23.2	+40.2	+81.9
■ Biotechnology & Healthcare	+7.7	+7.5	+15.9	-2.4	+24.9
■ NAV	+7.4	+6.4	+18.8	+30.9	+76.4
Rank within sector	3 / 7	4 / 7	2 / 7	1 / 7	1 / 6
Quartile	2	2	1	1	1

Fund Information

Sector	Biotechnology & Healthcare
Asset Class	Equity
Launch Date	15-Jun-2010
Fund Size	£476.6m / \$628.8m (23-Aug-2024)
Fund Manager	Gareth Powell James Douglas

How does FE fundinfo rate this fund?

Alpha Manager Rating	James Douglas
FE fundinfo Crown Rating	★★★★★
Risk Score	103

Investment Details

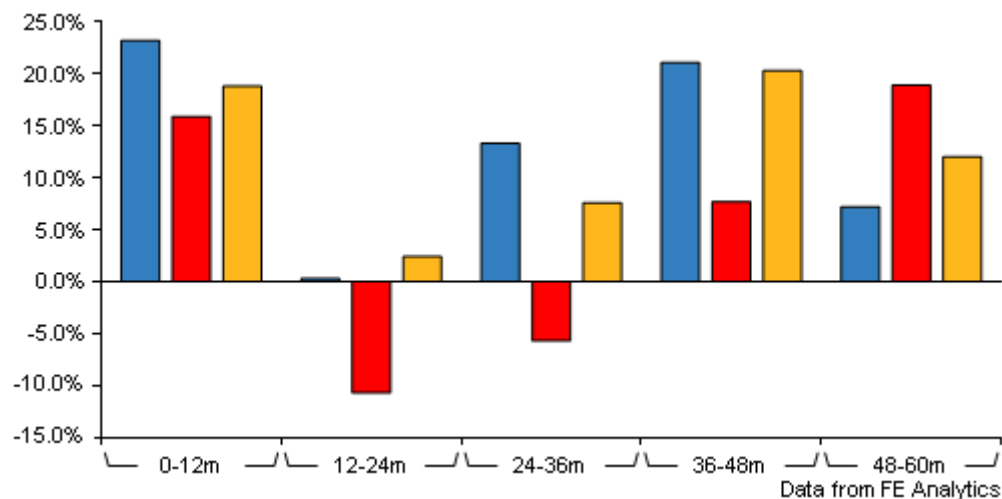
Initial Charge	0.00%
Annual Charges	0.75%
Note to charges	Initial Charges: max.;
Minimum Initial Investment	n/a
Minimum Additional Investment	n/a
Dividend Policy	n/a
Management Contract	n/a

Prices

Unit Type	INC
Mid	393.00(GBX)
Price Date	23 Aug 2024
Yield	0.61
Discount	-4.89
Diluted NAV	
- Estimate	412.15
- Last Published	412.15 (22-Aug-2024)

Polar Capital Global Healthcare Trust PLC Ordinary Share Class Ord 25P

Discrete Performance



	0-12m	12m-24m	24m-36m	36m-48m	48m-60m
Polar Capital Global Healthcare Trust PLC Ordinary Share Class Ord 25P	+23.2	+0.3	+13.3	+21.1	+7.2
Biotechnology & Healthcare	+15.9	-10.7	-5.7	+7.7	+18.9
NAV	+18.8	+2.4	+7.6	+20.3	+12.0
Rank within sector	2 / 7	1 / 7	1 / 7	3 / 7	6 / 6
Quartile	1	1	1	2	4

All prices in Pence Sterling (GBX) unless otherwise specified. Price total return performance figures are calculated using closing mid prices and with net income (dividends) reinvested. NAV total return performance figures are calculated using fully diluted (where applicable) daily estimated NAV figures from Thomson Financial Datastream. Performance figures are shown in Pound Sterling (GBP).

Codes

Citicode	K0P0
SEDOL	B6832P1
ISIN	GB00B6832P16
TIDM	PCGH

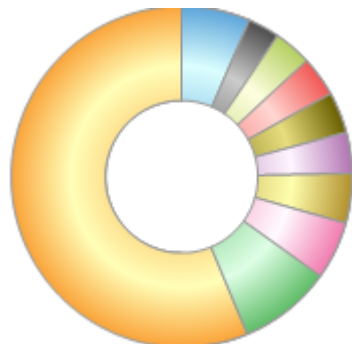
Contact Details

Address	16 Palace Street, London, United Kingdom, SW1E 5JD
Telephone numbers	+44 (0) 20 7227 2799 (Fax Number) +44 (0) 20 7227 2700 (Main Number)
Website	www.polarcapital.co.uk
Email	investor-relations@polarcapital.co.uk

Polar Capital Global Healthcare Trust PLC Ordinary Share Class Ord 25P

Asset Allocation (28 Jun 2024)

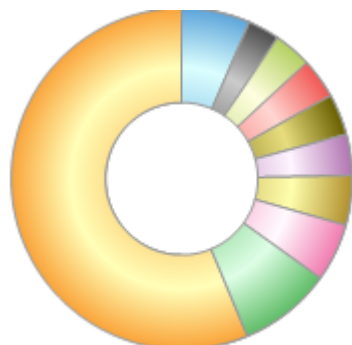
Rank	Asset Classes	%
1	United States Equities	56.30
2	Switzerland Equities	8.80
3	France Equities	5.50
4	Japan Equities	4.70
5	Netherlands Equities	3.90
6	Belgium Equities	3.90
7	Australia Equities	3.80
8	Ireland Equities	3.60
9	Denmark Equities	3.00
10	Others	6.50



Powered by data from FE fundinfo

Regional Breakdown (28 Jun 2024)

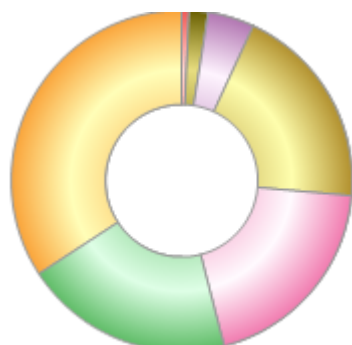
Rank	Regions	%
1	United States	56.30
2	Switzerland	8.80
3	France	5.50
4	Japan	4.70
5	Netherlands	3.90
6	Belgium	3.90
7	Australia	3.80
8	Ireland	3.60
9	Denmark	3.00
10	Others	6.50



Powered by data from FE fundinfo

Sector Breakdown (28 Jun 2024)

Rank	Sectors	%
1	Life Sciences Tools & Services	34.20
2	Healthcare Equipment	19.80
3	Pharmaceuticals	19.60
4	Managed Healthcare	19.50
5	Healthcare Facilities	4.40
6	Metal, Glass & Plastic Containers	1.80
7	Cash	0.70



Powered by data from FE fundinfo

Top Holdings (28 Jun 2024)

Rank	Largest Holdings	%
1	Eli Lilly & Co	7.30
2	UnitedHealth Group	7.20

Polar Capital Global Healthcare Trust PLC Ordinary Share Class Ord 25P

Rank	Largest Holdings	%
3	AbbVie	4.90
4	Novartis	4.50
5	UCB	3.90
6	CSL	3.80
7	Sanofi	3.60
8	Elevance Health	3.40
9	Becton Dickinson	3.10
10	Stryker Corp	3.10