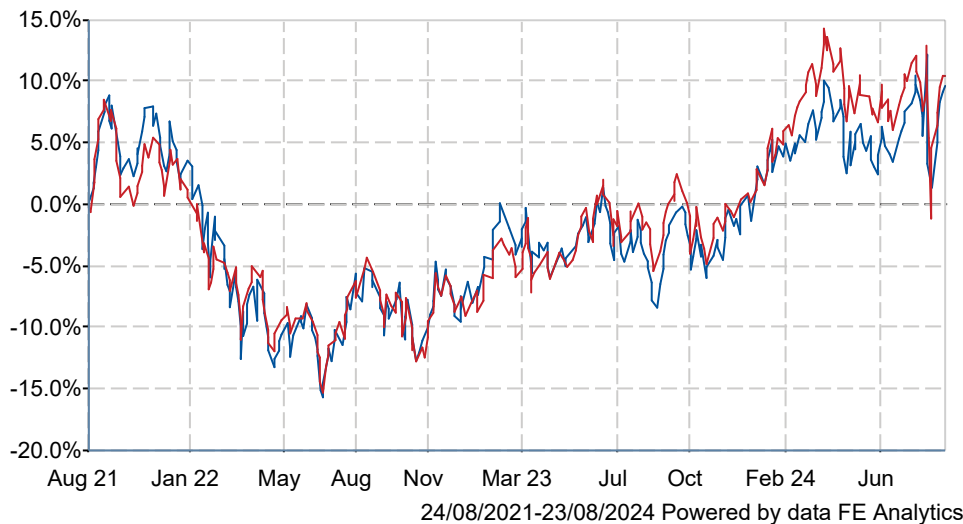


Jupiter Japan Income I Acc

What is the Fund's objective?

The objective of the Fund is to achieve long-term capital and income growth. The Fund's policy is to attain its objective by investing in a combination of Japanese equities and convertible bonds as well as cash, deposits and money market instruments.

Cumulative Performance




	3m	6m	1yr	3yrs	5yrs
Jupiter Japan Income I Acc	+5.5	+4.3	+16.6	+10.4	+34.3
IA Japan	+2.5	+1.7	+14.2	+11.5	+34.9
Rank within sector	13 / 103	16 / 102	28 / 102	65 / 97	49 / 92
Quartile	1	1	2	3	3

Fund Information

Sector	IA Japan
Asset Class	Equity
Launch Date	15-Sep-2005
Fund Size	£1,127.7m / \$1,487.8m (23-Aug-2024)
Fund Manager	Dan Carter Mitesh Patel

How does FE fundinfo rate this fund?

FE fundinfo Crown Rating	
Risk Score	161

Other ratings

Morningstar Analyst Rating	
----------------------------	---

Investment Details

Initial Charge	0.00%
Annual Charges	n/a
Note to charges	n/a
Minimum Initial Investment	£ 1,000,000
Minimum Additional Investment	£ 50,000
Dividend Policy	Feb 01 (Final), Aug 01

Prices

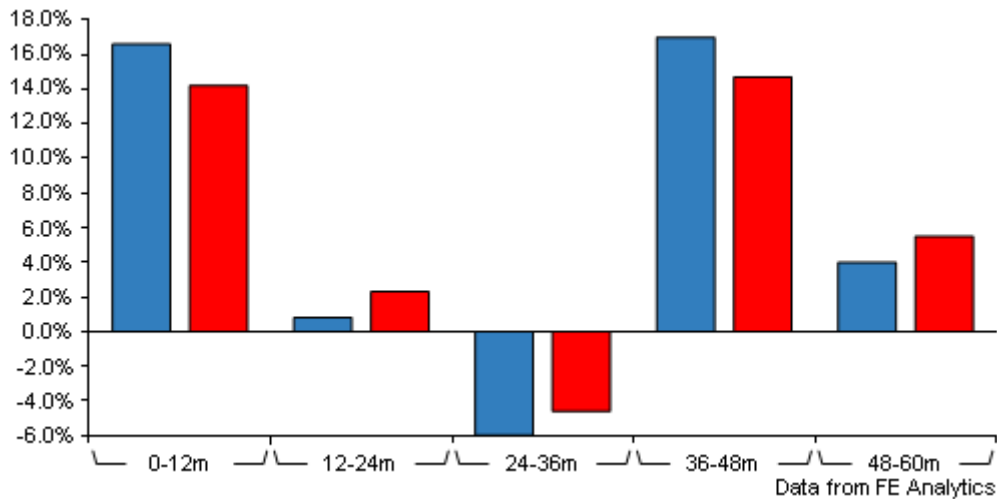
Unit Type	ACC
Mid	175.06(GBX)
Price Date	23 Aug 2024
Yield	2.04

Codes

Citicode	09QS
SEDOL	B5TGB44
ISIN	GB00B5TGB445

Jupiter Japan Income I Acc

Discrete Performance



	0-12m	12m-24m	24m-36m	36m-48m	48m-60m
Jupiter Japan Income I Acc	+16.6	+0.8	-6.0	+17.0	+4.0
IA Japan	+14.2	+2.3	-4.6	+14.7	+5.5
Rank within sector	28 / 102	66 / 101	69 / 97	24 / 94	37 / 92
Quartile	2	3	3	1	2

All prices in Pence Sterling (GBX) unless otherwise specified. Price total return performance figures are calculated on a bid price to bid price basis (mid to mid for OEICs) with net income (dividends) reinvested. Performance figures are shown in Pound Sterling (GBP).

Contact Details

Address The Zig Zag Building, 70
Victoria Street, London,
United Kingdom, SW1E 6SQ

Telephone numbers +44 (0)20 3817 1000 (Dealing
& Administration)
+44 (0)20 3817 1063 (Main
Number)

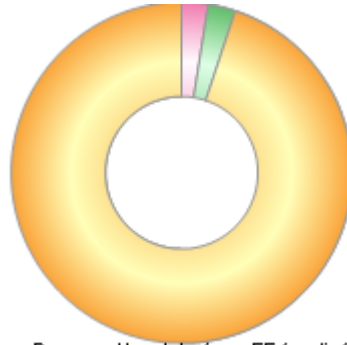
Website www.jupiteram.com

Email clientservices@jupiteram.com

Jupiter Japan Income I Acc

Asset Allocation (30 Apr 2024)

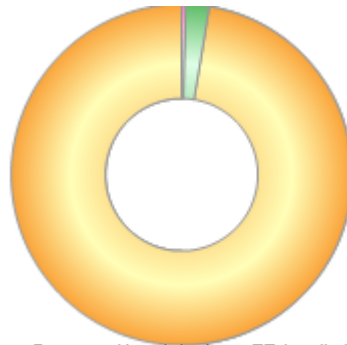
Rank	Asset Classes	%
1	Japanese Equities	94.92
2	Money Market	2.56
3	Asia Pacific Property Shares	2.52



Powered by data from FE fundinfo

Regional Breakdown (30 Apr 2024)

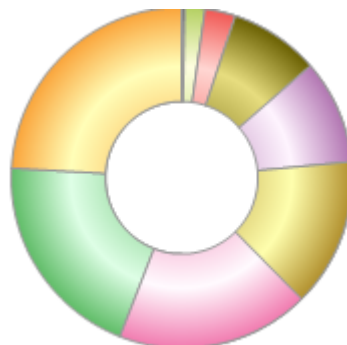
Rank	Regions	%
1	Japan	97.44
2	Cash & Cash Equivalents	2.18
3	Not Specified	0.38



Powered by data from FE fundinfo

Sector Breakdown (31 Jul 2024)

Rank	Sectors	%
1	Consumer Discretionary	24.10
2	Financials	20.00
3	Industrials	18.30
4	Technology	14.10
5	Basic Materials	9.90
6	Telecommunications	8.50
7	Real Estate	2.90
8	Health Care	1.90
9	Cash	0.30



Powered by data from FE fundinfo

Top Holdings (30 Jun 2024)

Rank	Largest Holdings	%
1	Sumitomo Mitsui Financial Group In	7.97
2	Sony Group Corp	5.21

Jupiter Japan Income I Acc

Rank	Largest Holdings	%
3	Recruit Holdings Ltd	4.66
4	Tokio Marine Holdings Inc	4.66
5	Orix Corp	4.47
6	Shin Etsu Chemical Ltd	4.30
7	Nec Corp	3.78
8	Sekisui House Ltd	3.67
9	Softbank Corp	3.54
10	Kddi Corp	3.49