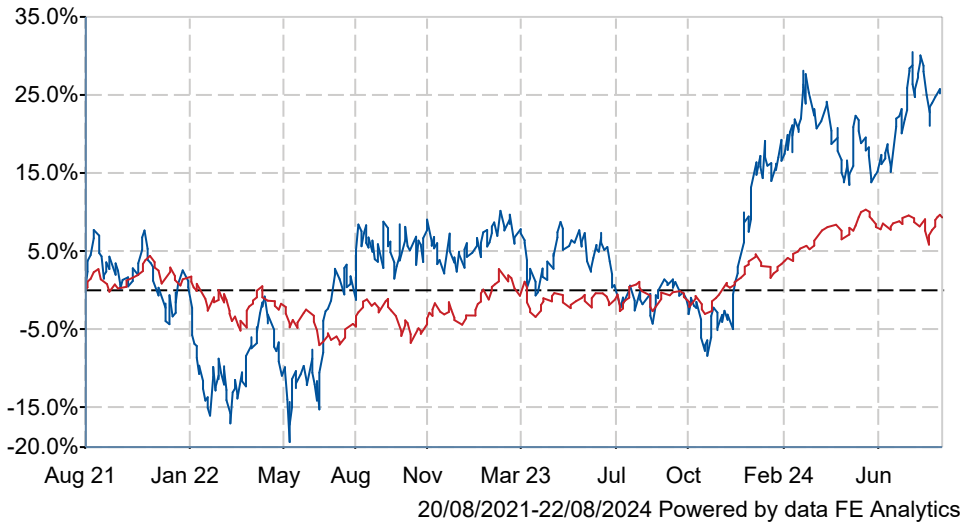




# Polar Capital Biotechnology I GBP

## What is the Fund's objective?

The objective of the Fund is to preserve capital and achieve long term capital appreciation by investing worldwide in the shares of biotechnology, diagnostics and life sciences tools companies.

## Cumulative Performance





|   | 3m   | 6m   | 1yr   | 3yrs  | 5yrs  |
|---|------|------|-------|-------|-------|
|  Polar Capital Biotechnology I GBP | +7.0 | +3.4 | +27.4 | +25.1 | +95.4 |
|  IA Specialist                     | -0.4 | +3.8 | +12.2 | +9.3  | +26.4 |

## Fund Information

|              |  |
|--------------|--|
| Sector       | IA Specialist                              |
| Asset Class  | Equity                                     |
| Launch Date  | 31-Oct-2013                                |
| Fund Size    | £1,481.1m /<br>\$1,938.1m<br>(21-Aug-2024) |
| Fund Manager | David Pinniger                             |

## How does FE fundinfo rate this fund?

|                          |   |
|--------------------------|---|
| FE fundinfo Crown Rating |  |
| Risk Score               |  |

## Investment Details

|                               |                        |
|-------------------------------|------------------------|
| Initial Charge                | 0.00%                  |
| Annual Charges                | 1.00%                  |
| Note to charges               | Initial Charges: max.; |
| Minimum Initial Investment    | £ 1,000,000            |
| Minimum Additional Investment | n/a                    |
| Dividend Policy               | Jan 01 (Final)         |

## Prices

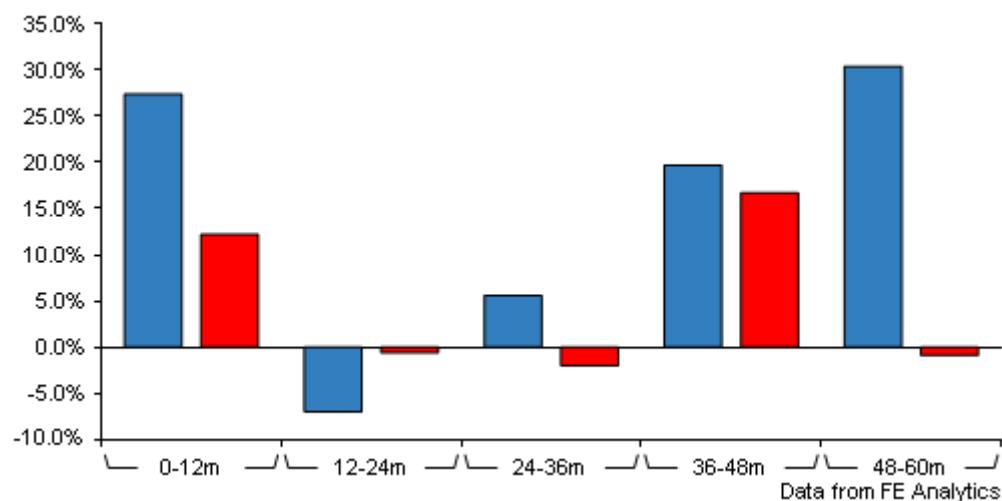
|            |             |
|------------|-------------|
| Unit Type  | INC         |
| Mid        | 37.83(GBP)  |
| Price Date | 21 Aug 2024 |
| Yield      | n/a         |

## Codes

|          |              |
|----------|--------------|
| Citicode | JTYF         |
| SEDOL    | B42P0H7      |
| ISIN     | IE00B42P0H75 |

# Polar Capital Biotechnology I GBP

## Discrete Performance



|                                     | 0-12m | 12m-24m | 24m-36m | 36m-48m | 48m-60m |
|-------------------------------------|-------|---------|---------|---------|---------|
| ■ Polar Capital Biotechnology I GBP | +27.4 | -7.0    | +5.6    | +19.7   | +30.4   |
| ■ IA Specialist                     | +12.2 | -0.6    | -2.0    | +16.7   | -0.9    |

All prices in Pence Sterling (GBX) unless otherwise specified. Price total return performance figures are calculated on a bid price to bid price basis (mid to mid for OEICs) with net income (dividends) reinvested. Performance figures are shown in Pound Sterling (GBP).

## Contact Details

**Address** 16 Palace Street, London, United Kingdom, SW1E 5JD

**Telephone numbers** +44 (0) 20 7227 2799 (Fax Number)  
+44 (0) 20 7227 2700 (Main Number)

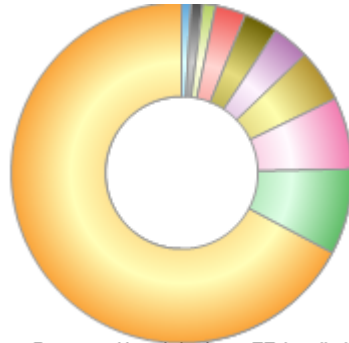
**Website** [www.polarcapital.co.uk](http://www.polarcapital.co.uk)

**Email** [Investor-Relations@polarcapital.co.uk](mailto:Investor-Relations@polarcapital.co.uk)

# Polar Capital Biotechnology I GBP

## Asset Allocation (28 Jun 2024)

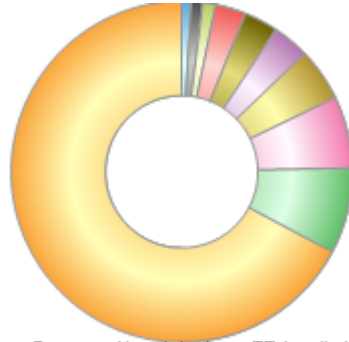
| Rank | Asset Classes     | %     |
|------|-------------------|-------|
| 1    | US Equities       | 67.14 |
| 2    | Dutch Equities    | 8.14  |
| 3    | Danish Equities   | 6.83  |
| 4    | Swedish Equities  | 5.01  |
| 5    | UK Equities       | 3.49  |
| 6    | Canadian Equities | 3.24  |
| 7    | Belgian Equities  | 2.94  |
| 8    | Irish Equities    | 1.19  |
| 9    | French Equities   | 1.10  |
| 10   | Others            | 0.92  |



Powered by data from FE fundinfo

## Regional Breakdown (28 Jun 2024)

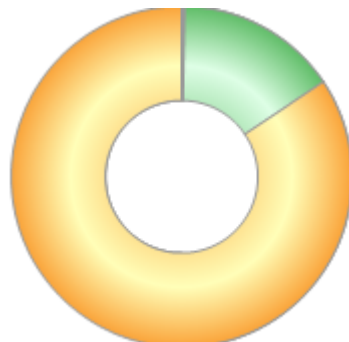
| Rank | Regions     | %     |
|------|-------------|-------|
| 1    | USA         | 67.14 |
| 2    | Netherlands | 8.14  |
| 3    | Denmark     | 6.83  |
| 4    | Sweden      | 5.01  |
| 5    | UK          | 3.49  |
| 6    | Canada      | 3.24  |
| 7    | Belgium     | 2.94  |
| 8    | Ireland     | 1.19  |
| 9    | France      | 1.10  |
| 10   | Others      | 0.92  |



Powered by data from FE fundinfo

## Sector Breakdown (28 Jun 2024)

| Rank | Sectors                       | %     |
|------|-------------------------------|-------|
| 1    | Biotechnology/Medical         | 84.39 |
| 2    | Pharmaceuticals               | 15.30 |
| 3    | Money Market                  | 0.21  |
| 4    | Healthcare & Medical Products | 0.11  |
|      |                               |       |
|      |                               |       |
|      |                               |       |
|      |                               |       |
|      |                               |       |



Powered by data from FE fundinfo

## Top Holdings (28 Jun 2024)

| Rank | Largest Holdings | %    |
|------|------------------|------|
| 1    | AMGEN INC        | 7.05 |
| 2    | ARGENX SE        | 5.56 |

# Polar Capital Biotechnology I GBP

| Rank | Largest Holdings            | %    |
|------|-----------------------------|------|
| 3    | ZEALAND PHARMA A/S          | 5.43 |
| 4    | BLUEPRINT MEDICINES CORP    | 5.02 |
| 5    | VERTEX PHARMACEUTICALS INC  | 4.63 |
| 6    | REGENERON PHARMACEUTICALS   | 4.45 |
| 7    | ALNYLAM PHARMACEUTICALS INC | 3.77 |
| 8    | CELLDEX THERAPEUTICS INC    | 3.65 |
| 9    | RHYTHM PHARMACEUTICALS INC  | 3.47 |
| 10   | XENON PHARMACEUTICALS INC   | 3.24 |