




Henderson European Trust PLC Ord 5P

What is the Fund's objective?

The Company seeks to maximise total return (a combination of income and capital growth) from a portfolio of stocks listed in Europe.

Cumulative Performance



	3m	6m	1yr	3yrs	5yrs
 Henderson European Trust PLC Ord 5P	-1.3	+7.9	+19.9	+26.6	+73.2
 Europe	-2.6	+3.4	+16.5	+6.5	+53.3
 NAV	-3.3	+3.1	+17.3	+23.7	+69.5
Rank within sector	2 / 6	2 / 6	1 / 6	2 / 5	2 / 5
Quartile	1	1	1	1	1

Sector	Europe
Asset Class	Equity
Launch Date	01-Jan-1971
Fund Size	£620.6m / \$818.8m (23-Aug-2024)
Fund Manager	John Bennett Tom O'Hara

How does FE fundinfo rate this fund?

Alpha Manager John Bennett

Rating

FE fundinfo Crown



Rating

Risk Score

159

Investment Details

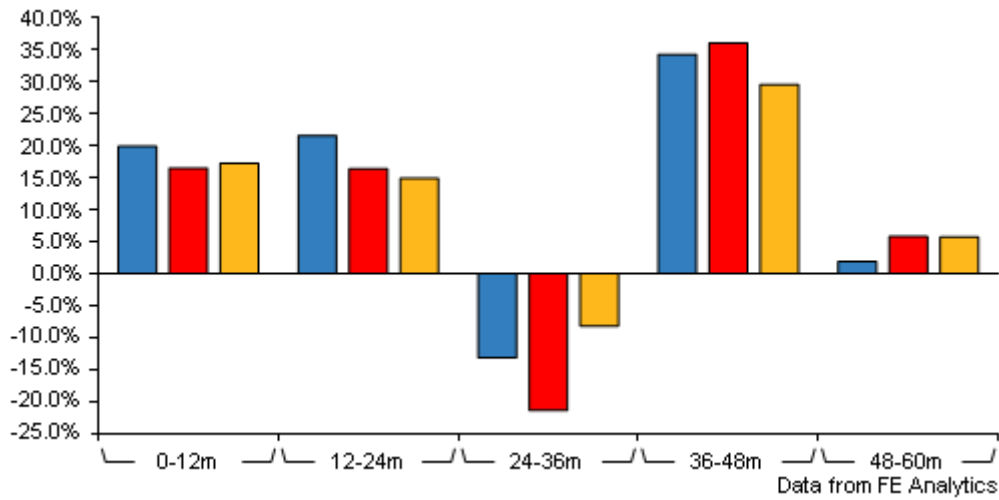
Initial Charge	0.00%
Annual Charges	0.65%
Note to charges	Initial Charges: max.;
Minimum Initial Investment	n/a
Minimum Additional Investment	n/a
Dividend Policy	n/a

Management Contract

Management agreement terminable on one years notice. The management fee is calculated monthly in arrear at 0.75% per annum on the value of the Company's Total Assets (before deducting bank loan). The Company's key performance indicator is the movement of the NAV compared with the movement of the FTSE World Index - Europe (ex UK) in sterling terms (the Index). The investment management agreement provides for an additional performance-related fee to the Manager in years when the NAV decreases based on the degree to which NAV exceeds that of the index. No performance related fee is payable for the year to 30-Sep-08.

Henderson European Trust PLC Ord 5P

Discrete Performance



	0-12m	12m-24m	24m-36m	36m-48m	48m-60m
■ Henderson European Trust PLC Ord 5P	+19.9	+21.6	-13.2	+34.3	+1.9
■ Europe	+16.5	+16.4	-21.4	+36.1	+5.8
■ NAV	+17.3	+14.9	-8.2	+29.6	+5.7
Rank within sector	1 / 6	3 / 6	2 / 5	3 / 5	4 / 5
Quartile	1	2	1	2	3

All prices in Pence Sterling (GBX) unless otherwise specified. Price total return performance figures are calculated using closing mid prices and with net income (dividends) reinvested. NAV total return performance figures are calculated using fully diluted (where applicable) daily estimated NAV figures from Thomson Financial Datastream. Performance figures are shown in Pound Sterling (GBP).

Prices

Unit Type	INC
Mid	187.00(GBX)
Price Date	23 Aug 2024
Yield	3.26
Discount	-7.97
Diluted NAV	
- Estimate	203.20
- Last Published	203.20 (22-Aug-2024)

Codes

Citicode	NW58
SEDOL	BLSNGB0
ISIN	GB00BLSNGB01
TIDM	HET

Contact Details

Address	201 Bishopsgate, London, United Kingdom, EC2M 3AE
Telephone numbers	+44 (0)20 7818 1819 (Fax Number) +44 (0)20 7818 1818 (Main Number)
Website	www.janushenderson.com

Henderson European Trust PLC Ord 5P

Asset Allocation (30 Jun 2024)

Rank	Asset Classes	%
1	French Equities	24.00
2	German Equities	18.50
3	Dutch Equities	13.00
4	Swiss Equities	10.00
5	Danish Equities	7.80
6	UK Equities	7.30
7	International Equities	5.00
8	Finnish Equities	4.70
9	Belgian Equities	3.80
10	Others	5.90



Powered by data from FE fundinfo

Regional Breakdown (30 Jun 2024)

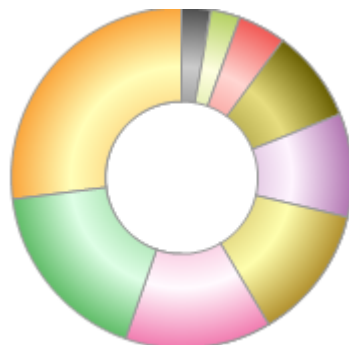
Rank	Regions	%
1	France	24.00
2	Germany	18.50
3	Netherlands	13.00
4	Switzerland	10.00
5	Denmark	7.80
6	United Kingdom	7.30
7	Other	5.00
8	Finland	4.70
9	Belgium	3.80
10	Others	5.90



Powered by data from FE fundinfo

Sector Breakdown (31 Jul 2024)

Rank	Sectors	%
1	Industrials	27.25
2	Health Care	17.82
3	Technology	13.99
4	Financials	12.94
5	Consumer Discretionary	9.92
6	Consumer Staples	8.86
7	Energy	4.56
8	Utilities	2.84
9	Basic Materials	2.83
10	Money Market	-1.02



Powered by data from FE fundinfo

Top Holdings (30 Jun 2024)

Rank	Largest Holdings	%
1	Novo Nordisk	6.80
2	ASML	6.70

Henderson European Trust PLC Ord 5P

Rank	Largest Holdings	%
3	SAP	4.00
4	TotalEnergies	3.60
5	Schneider Electric	3.40
6	LVMH Moet Hennessy Louis Vuitton	3.20
7	Nestlé	3.10
8	Siemens	3.00
9	Shell	2.80
10	Adidas	2.80