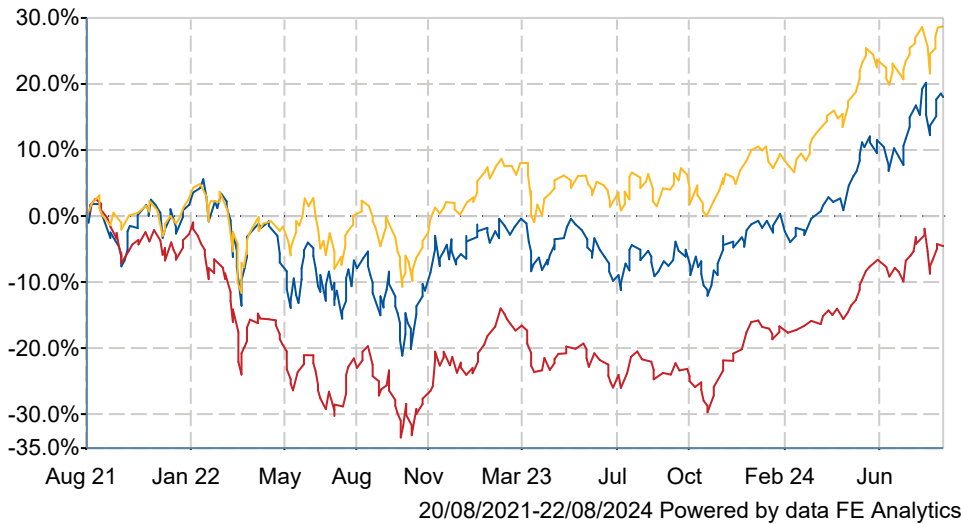





# Fidelity Special Values Ordinary

## What is the Fund's objective?

The Company aims to achieve long term capital growth primarily through investment in equities (and their related securities) of UK companies which the Investment Manager believes to be undervalued or where the potential has not been recognised by the market. The investment approach is flexible, with positions in large, medium and smaller sized companies, across all industries.



## Cumulative Performance



	3m	6m	1yr	3yrs	5yrs
 Fidelity Special Values Ordinary	+6.3	+20.1	+30.0	+18.0	+50.2
 UK All Companies	+3.7	+14.7	+26.8	-4.5	+34.0
 NAV	+3.5	+17.5	+26.5	+28.6	+61.5
Rank within sector	1 / 7	1 / 7	3 / 7	2 / 7	3 / 7
Quartile	1	1	2	1	2

Sector	UK All Companies
Asset Class	Equity
Launch Date	17-Nov-1994
Fund Size	£1,063.0m / \$1,391.0m (22-Aug-2024)
Fund Manager	Alex Wright  Jonathan Winton

## How does FE fundinfo rate this fund?

Alpha Manager Rating	Alex Wright
FE fundinfo Crown Rating	
Risk Score	

## Investment Details

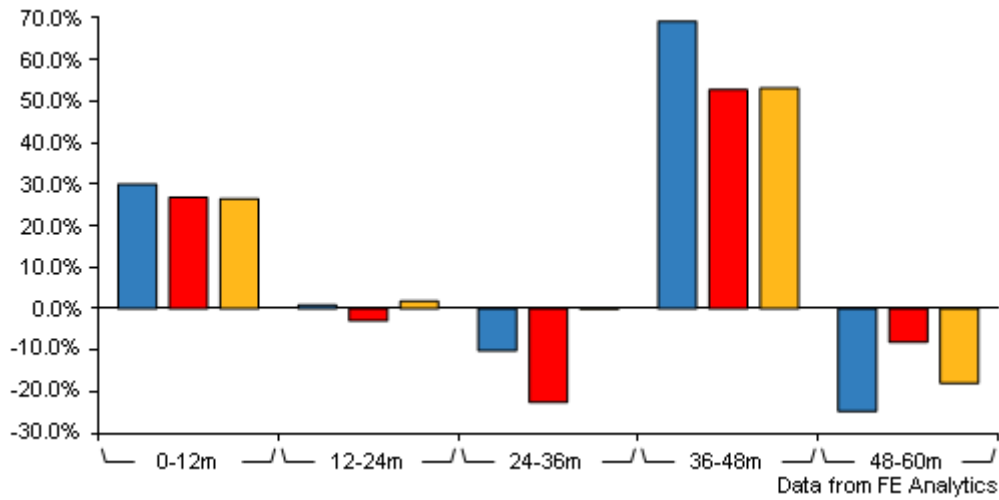
Initial Charge	0.00%
Annual Charges	0.60%
Note to charges	n/a
Minimum Initial Investment	£ 1,000
Minimum Additional Investment	£ 250
Dividend Policy	n/a

## Management Contract

Fidelity Investments International provides management, accounting, administrative and secretarial services and is paid a fee at the rate of 0.875% p.a. (plus VAT) of the value of the total assets under management, calculated and payable quarterly in arrears. In computing total assets, the value of any investment in any fund that is managed by the Manager or an Associate of the Manager is excluded. There will also be a flat fee of GBP600,000 for non-portfolio management services. The agreement is terminable by either party on six months notice.

# Fidelity Special Values Ordinary

## Discrete Performance



	0-12m	12m-24m	24m-36m	36m-48m	48m-60m
<span style="color: blue;">■</span> Fidelity Special Values Ordinary	+30.0	+0.9	-10.1	+69.2	-24.7
<span style="color: red;">■</span> UK All Companies	+26.8	-2.9	-22.5	+52.7	-8.0
<span style="color: orange;">■</span> NAV	+26.5	+1.8	-0.1	+53.1	-17.9
Rank within sector	3 / 7	2 / 7	2 / 7	2 / 7	7 / 7
Quartile	2	1	1	1	4

All prices in Pence Sterling (GBX) unless otherwise specified. Price total return performance figures are calculated using closing mid prices and with net income (dividends) reinvested. NAV total return performance figures are calculated using fully diluted (where applicable) daily estimated NAV figures from Thomson Financial Datastream. Performance figures are shown in Pound Sterling (GBP).

## Prices

Unit Type	INC
Mid	328.00(GBX)
Price Date	22 Aug 2024
Yield	2.90
Discount	-6.42
Diluted NAV	
- Estimate	350.52
- Last Published	350.52 (21-Aug-2024)

## Codes

Citicode	F112
SEDOL	BWXC7Y9
ISIN	GB00BWXC7Y93
TIDM	FSV

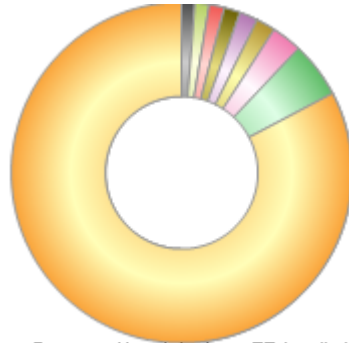
## Contact Details

Address	4 Cannon St, London, EC4M 5AB
Telephone numbers	0333 300 3350 (Main Number)
Website	<a href="http://www.fidelityinternational.com">www.fidelityinternational.com</a>

# Fidelity Special Values Ordinary

## Asset Allocation (30 Jun 2024)

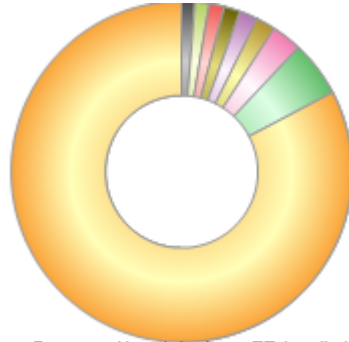
Rank	Asset Classes	%
1	United Kingdom Equities	86.10
2	Ireland Equities	5.50
3	Switzerland Equities	3.00
4	Italy Equities	1.90
5	Sweden Equities	1.80
6	Bermuda Equities	1.60
7	Australia Equities	1.50
8	Greece Equities	1.40
9	Others Equities	1.30
10	Others	-4.10



Powered by data from FE fundinfo

## Regional Breakdown (30 Jun 2024)

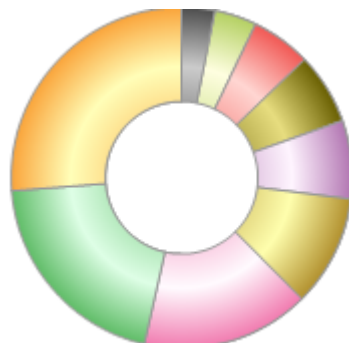
Rank	Regions	%
1	United Kingdom	86.10
2	Ireland	5.50
3	Switzerland	3.00
4	Italy	1.90
5	Sweden	1.80
6	Bermuda	1.60
7	Australia	1.50
8	Greece	1.40
9	Others	1.30
10	Others	-4.10



Powered by data from FE fundinfo

## Sector Breakdown (30 Jun 2024)

Rank	Sectors	%
1	Financials	26.80
2	Industrials	20.70
3	Consumer Staples	16.30
4	Consumer Discretionary	10.80
5	Energy	7.60
6	Health Care	6.90
7	Basic Materials	5.80
8	Utilities	4.10
9	Telecommunications	3.20
10	Others	-2.20



Powered by data from FE fundinfo

## Top Holdings (30 Jun 2024)

Rank	Largest Holdings	%
1	IMPERIAL BRANDS PLC	4.10
2	DCC PLC	3.20

# Fidelity Special Values Ordinary

Rank	Largest Holdings	%
3	AVIVA PLC	3.00
4	ROCHE HOLDING AG	3.00
5	RECKITT BENCKISER GROUP PLC	2.70
6	KELLER GROUP PLC	2.70
7	NATWEST GROUP PLC	2.70
8	NATIONAL GRID PLC	2.60
9	STANDARD CHARTERED PLC	2.60
10	MITIE GROUP PLC	2.50