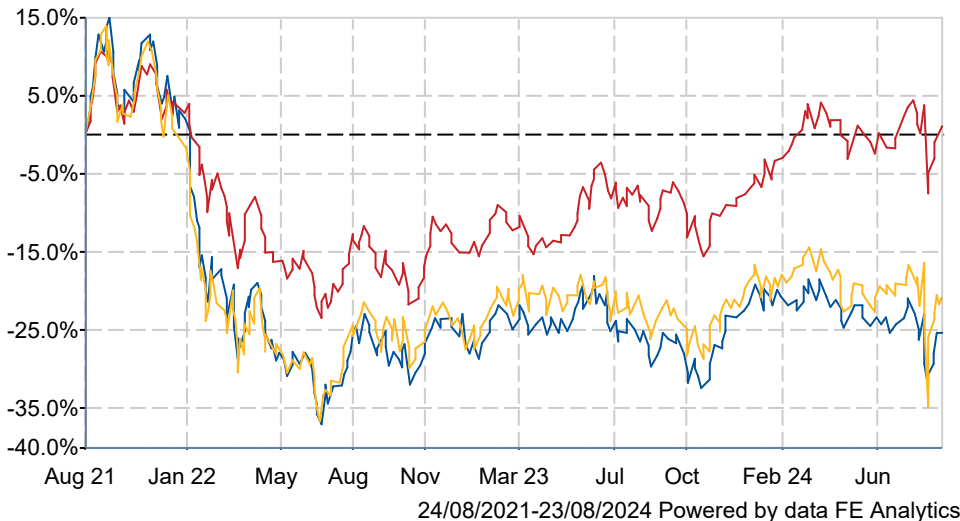





# Fidelity Japan Trust PLC Ordinary ORD 25P

## What is the Fund's objective?

The Company aims to achieve long term capital growth by investing predominantly in equities and their related securities of Japanese companies. The Investment Manager will typically focus on those companies primarily listed on Japanese stock exchanges whose growth prospects are not fully recognised by the market (growth at a reasonable price). The Investment Manager is not restricted in terms of size or industry of the underlying entities in which it invests. The Company may also hold cash or invest in cash equivalents including money market instruments, and is able to use derivatives for efficient portfolio management, gearing and investment purposes. The Investment Manager must work within the guidelines set out in the investment policy.


## Cumulative Performance



	3m	6m	1yr	3yrs	5yrs
 Fidelity Japan Trust PLC Ordinary ORD 25P	-1.2	-5.6	+4.6	-24.0	+10.6
 Japan	+2.0	+0.6	+12.4	+2.1	+31.8
 NAV	+0.6	-4.2	+3.9	-19.2	+14.3
Rank within sector	5 / 5	5 / 5	5 / 5	5 / 5	4 / 5
Quartile	4	4	4	4	3

Sector	Japan
Asset Class	Equity
Launch Date	15-Mar-1994
Fund Size	£200.2m / \$264.1m (23-Aug-2024)
Fund Manager	Nicholas Price

## How does FE fundinfo rate this fund?

FE fundinfo Crown Rating	
Risk Score	<b>172</b>

## Investment Details

Initial Charge	0.00%
Annual Charges	0.70%
Note to charges	n/a
Minimum Initial Investment	£ 1,000
Minimum Additional Investment	£ 250
Dividend Policy	n/a

## Management Contract

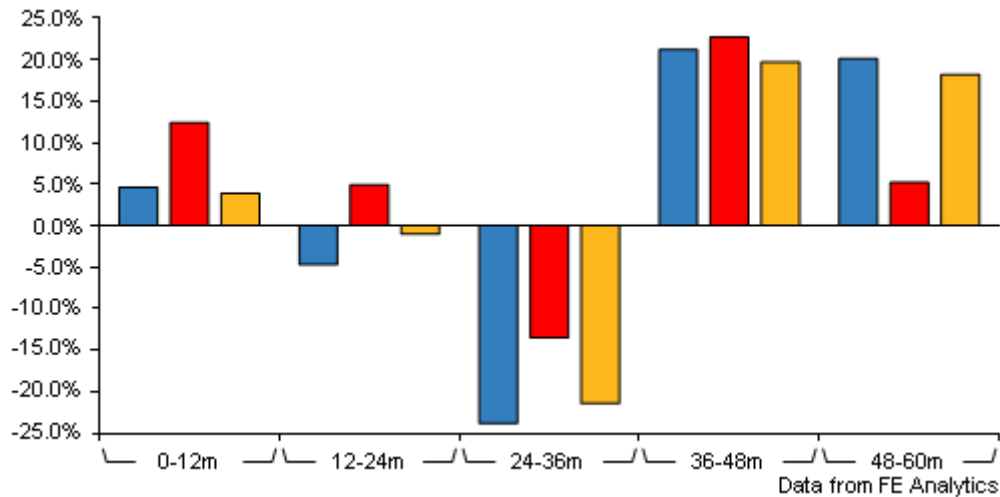
Management agreement with Fidelity International Ltd, terminable on six months notice. Management fee at the annual rate of 1.0% of total assets, payable quarterly in arrears. The Agreement is terminable by either party on six months notice. Secretarial and accounting services are charged at a fixed fee (subject to annual indexation), currently GBP33,457 per annum and payable quarterly in arrear.

## Prices

Unit Type	INC
Mid	169.50(GBX)
Price Date	23 Aug 2024
Yield	0.00
Discount	-12.57
Diluted NAV	
- Estimate	193.86
- Last Published	193.86 (22-Aug-2024)

# Fidelity Japan Trust PLC Ordinary ORD

## 25P



	0-12m	12m-24m	24m-36m	36m-48m	48m-60m
<span style="color: blue;">■</span> Fidelity Japan Trust PLC Ordinary ORD 25P	+4.6	-4.7	-23.8	+21.2	+20.1
<span style="color: red;">■</span> Japan	+12.4	+4.9	-13.5	+22.7	+5.2
<span style="color: orange;">■</span> NAV	+3.9	-1.0	-21.4	+19.7	+18.2
Rank within sector	5 / 5	4 / 5	4 / 5	3 / 5	2 / 5
Quartile	4	3	3	2	1

All prices in Pence Sterling (GBX) unless otherwise specified. Price total return performance figures are calculated using closing mid prices and with net income (dividends) reinvested. NAV total return performance figures are calculated using fully diluted (where applicable) daily estimated NAV figures from Thomson Financial Datastream. Performance figures are shown in Pound Sterling (GBP).

### Codes

Citicode	F109
SEDOL	0332855
ISIN	GB0003328555
TIDM	FJV

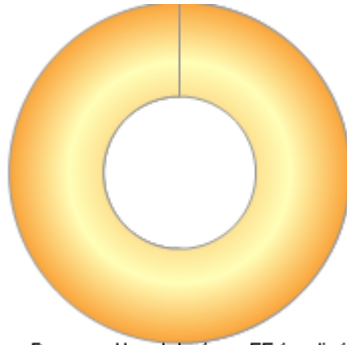
### Contact Details

Address	4 Cannon St, London, EC4M 5AB
Telephone numbers	0333 300 3350 (Main Number)
Website	<a href="http://www.fidelityinternational.com">www.fidelityinternational.com</a>

# Fidelity Japan Trust PLC Ordinary ORD 25P

## Asset Allocation (30 Jun 2024)

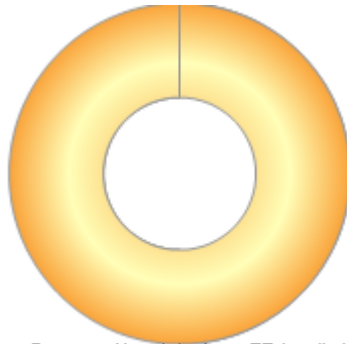
Rank	Asset Classes	%
1	Japan Equities	123.90



Powered by data from FE fundinfo

## Regional Breakdown (30 Jun 2024)

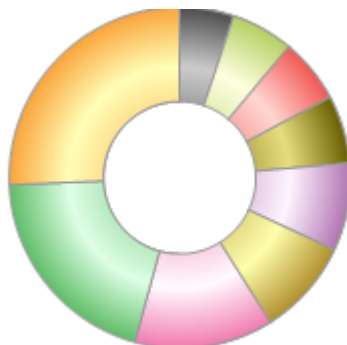
Rank	Regions	%
1	Japan	123.90



Powered by data from FE fundinfo

## Sector Breakdown (30 Jun 2024)

Rank	Sectors	%
1	Other Sectors	29.00
2	Electric Appliances	22.70
3	Chemicals	14.90
4	Services	10.30
5	Wholesale Trade	9.40
6	Machinery	7.30
7	Banks	6.90
8	Information & Communication	6.70
9	Precision Instruments	5.80
10	Others	-13.00



Powered by data from FE fundinfo

## Top Holdings (30 Jun 2024)

Rank	Largest Holdings	%
1	OSAKA SODA CO LTD	5.90
2	MISUMI GROUP INC	5.50

# Fidelity Japan Trust PLC Ordinary ORD 25P

3	RYUJIN KEIKAKU CO LTD	4.70
4	MIZUHO FINL GROUP INC	4.60
5	KEYENCE CORP	4.50
6	TOKYO ELECTRON LTD	4.10
7	mitsubishi electric corp	3.70
8	RIKEN KEIKI CO LTD	3.70
9	HARMONIC DRIVE SYSTEMS INC	3.50
10	NOF CORP	3.00