

Fund Information

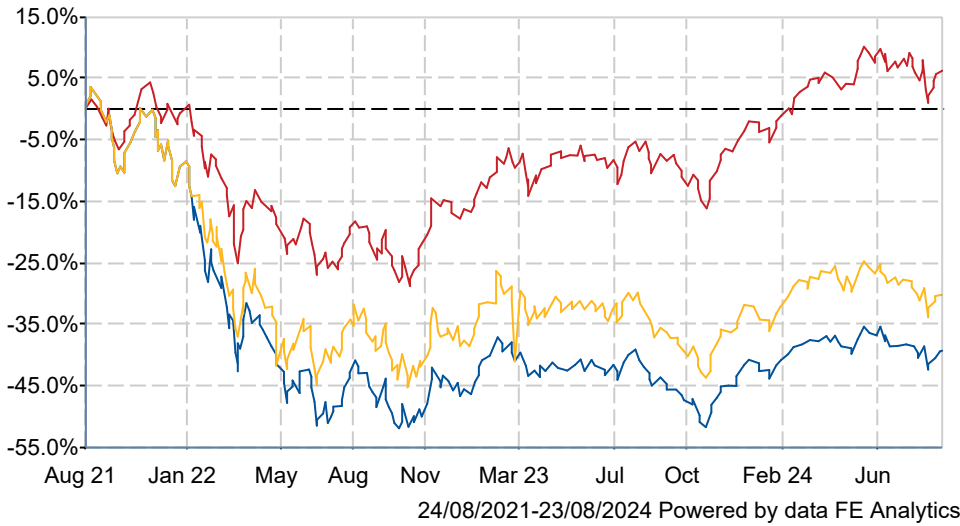
| | |
|--------------|-------------------------------------|
| Sector | Europe |
| Asset Class | Equity |
| Launch Date | 22-May-1972 |
| Fund Size | £334.9m / \$441.8m (23-Aug-2024) |
| Fund Manager | Stephen Paice Chris Davies |




Baillie Gifford Baillie Gifford European Growth Trust plc Ord 2.5 P

What is the Fund's objective?

The Trust aims to achieve capital growth over the long term from a diversified portfolio of European securities; the yield on the Trust's investments is of secondary importance.

Cumulative Performance



| | 3m | 6m | 1yr | 3yrs | 5yrs |
|---|-------|-------|-------|-------|-------|
|  Baillie Gifford Baillie Gifford European Growth Trust plc Ord 2.5 P | -4.5 | -1.9 | +9.6 | -38.8 | +32.9 |
|  Europe | -2.6 | +3.4 | +16.5 | +6.5 | +53.3 |
|  NAV | -6.1 | -3.1 | +9.1 | -29.6 | +32.6 |
| Rank within sector | 6 / 6 | 5 / 6 | 6 / 6 | 5 / 5 | 4 / 5 |
| Quartile | 4 | 4 | 4 | 4 | 3 |

How does FE fundinfo rate this fund?

FE fundinfo Crown Rating



Risk Score

177

Investment Details

| | |
|-------------------------------|-------|
| Initial Charge | n/a |
| Annual Charges | 0.47% |
| Note to charges | n/a |
| Minimum Initial Investment | n/a |
| Minimum Additional Investment | n/a |
| Dividend Policy | n/a |

Management Contract

n/a

Prices

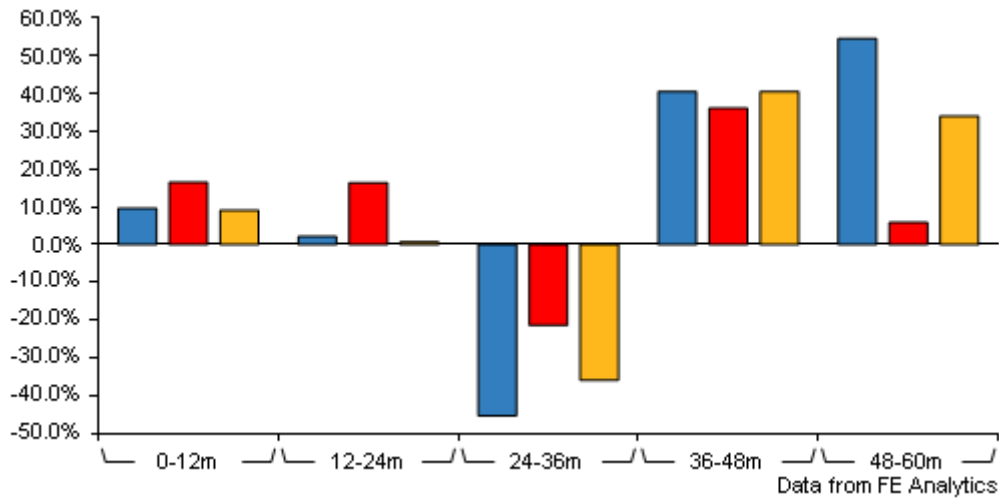
| | |
|------------------|----------------------|
| Unit Type | INC |
| Mid | 94.90(GBX) |
| Price Date | 23 Aug 2024 |
| Yield | 0.42 |
| Discount | -10.06 |
| Diluted NAV | |
| - Estimate | 105.52 |
| - Last Published | 105.52 (22-Aug-2024) |

Codes

| | |
|----------|--------------|
| Citicode | FJ18 |
| SEDOL | BMC7T38 |
| ISIN | GB00BMC7T380 |
| TIDM | BGEU |

Baillie Gifford Baillie Gifford European Growth Trust plc Ord 2.5 P

Discrete Performance



| | 0-12m | 12m-24m | 24m-36m | 36m-48m | 48m-60m |
|---|-------|---------|---------|---------|---------|
| Baillie Gifford Baillie Gifford European Growth Trust plc Ord 2.5 P | +9.6 | +2.1 | -45.3 | +40.5 | +54.5 |
| Europe | +16.5 | +16.4 | -21.4 | +36.1 | +5.8 |
| NAV | +9.1 | +0.7 | -35.9 | +40.5 | +34.0 |
| Rank within sector | 6 / 6 | 6 / 6 | 5 / 5 | 2 / 5 | 1 / 5 |
| Quartile | 4 | 4 | 4 | 1 | 1 |

All prices in Pence Sterling (GBX) unless otherwise specified. Price total return performance figures are calculated using closing mid prices and with net income (dividends) reinvested. NAV total return performance figures are calculated using fully diluted (where applicable) daily estimated NAV figures from Thomson Financial Datastream. Performance figures are shown in Pound Sterling (GBP).

Contact Details

Address Calton Square, 1 Greenside Row, Edinburgh, EH1 3AN

Telephone numbers +44 (0) 131 275 2000 (Main Number)

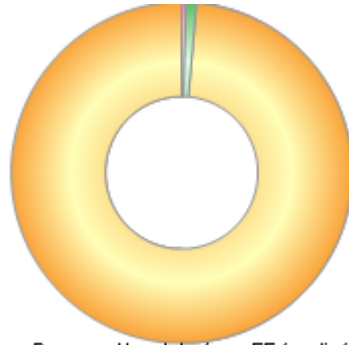
Website www.bailliegifford.com

Email enquiries@bailliegifford.com

Baillie Gifford Baillie Gifford European Growth Trust plc Ord 2.5 P

Asset Allocation (31 Jul 2024)

| Rank | Asset Classes | % |
|------|-----------------|-------|
| 1 | European Equity | 98.61 |
| 2 | Cash | 0.98 |
| 3 | Overseas Fixed | 0.41 |
| | | |
| | | |
| | | |
| | | |
| | | |
| | | |



Powered by data from FE fundinfo

Regional Breakdown (31 Jul 2024)

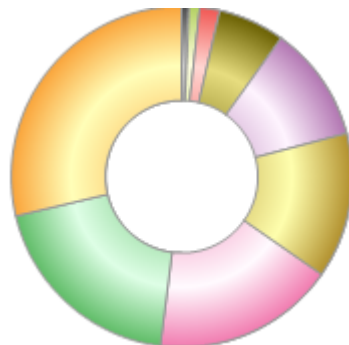
| Rank | Regions | % |
|------|-------------|-------|
| 1 | Netherlands | 21.58 |
| 2 | Sweden | 20.57 |
| 3 | France | 10.60 |
| 4 | Denmark | 8.48 |
| 5 | Germany | 7.92 |
| 6 | Italy | 6.63 |
| 7 | Ireland | 6.61 |
| 8 | Switzerland | 6.16 |
| 9 | Norway | 4.53 |
| 10 | Others | 6.92 |



Powered by data from FE fundinfo

Sector Breakdown (31 Jul 2024)

| Rank | Sectors | % |
|------|------------------------|-------|
| 1 | Industrials | 28.69 |
| 2 | Information Technology | 19.28 |
| 3 | Consumer Discretionary | 17.31 |
| 4 | Financials | 13.81 |
| 5 | Health Care | 11.02 |
| 6 | Communication Services | 6.29 |
| 7 | Consumer Staples | 1.90 |
| 8 | Cash | 0.98 |
| 9 | Real Estate | 0.72 |



Powered by data from FE fundinfo

Top Holdings (31 Jul 2024)

| Rank | Largest Holdings | % |
|------|------------------|------|
| 1 | Topicus.com | 4.80 |
| 2 | Prosus | 4.50 |

Baillie Gifford Baillie Gifford European Growth Trust plc Ord 2.5 P

| Rank | Largest Holdings | % |
|------|------------------|------|
| 3 | ASML | 4.21 |
| 4 | DSV | 4.18 |
| 5 | Schibsted | 3.92 |
| 6 | Atlas Copco | 3.64 |
| 7 | Ryanair | 3.49 |
| 8 | Hypoport | 3.43 |
| 9 | Allegro.eu | 3.31 |
| 10 | Kingspan Group | 3.12 |