

Edinburgh Worldwide IT PLC Ord

What is the Fund's objective?

The Trust aims for capital growth from a global portfolio of initially immature entrepreneurial companies, typically with a market capitalisation of less than \$5bn at time of initial investment, which are believed to offer long-term growth potential.


Cumulative Performance



	3m	6m	1yr	3yrs	5yrs
Edinburgh Worldwide IT PLC Ord	+2.9	+1.9	+1.8	-53.9	-23.3
Global Smaller Companies	+2.1	+8.6	+15.4	-19.7	+27.1
NAV	+1.4	-1.9	-7.1	-49.3	-12.6
Rank within sector	3 / 5	5 / 5	5 / 5	5 / 5	5 / 5
Quartile	2	4	4	4	4

Sector	Global Smaller Companies
Asset Class	Equity
Launch Date	06-Apr-1998
Fund Size	£559.7m / \$738.5m (23-Aug-2024)
Fund Manager	Douglas Brodie Luke Ward Svetlana Viteva

How does FE fundinfo rate this fund?

FE fundinfo Crown Rating	
Risk Score	201

Investment Details

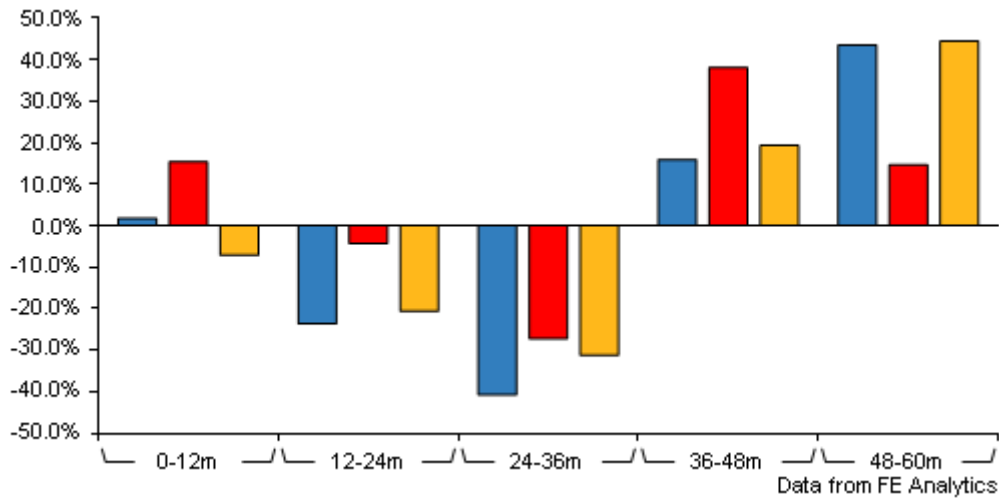
Initial Charge	0.00%
Annual Charges	0.58%
Note to charges	n/a
Minimum Initial Investment	n/a
Minimum Additional Investment	n/a
Dividend Policy	n/a
Management Contract	n/a

Prices

Unit Type	INC
Mid	148.00(GBX)
Price Date	23 Aug 2024
Yield	0.00
Discount	-10.27
Diluted NAV	
- Estimate	164.93
- Last Published	164.93 (22-Aug-2024)

Edinburgh Worldwide IT PLC Ord

Discrete Performance



	0-12m	12m-24m	24m-36m	36m-48m	48m-60m
Edinburgh Worldwide IT PLC Ord	+1.8	-23.6	-40.7	+15.9	+43.5
Global Smaller Companies	+15.4	-4.3	-27.2	+38.1	+14.6
NAV	-7.1	-20.6	-31.2	+19.3	+44.4
Rank within sector	5 / 5	5 / 5	5 / 5	5 / 5	1 / 5
Quartile	4	4	4	4	1

All prices in Pence Sterling (GBX) unless otherwise specified. Price total return performance figures are calculated using closing mid prices and with net income (dividends) reinvested. NAV total return performance figures are calculated using fully diluted (where applicable) daily estimated NAV figures from Thomson Financial Datastream. Performance figures are shown in Pound Sterling (GBP).

Codes

Citicode	EB16
SEDOL	BHSRZC8
ISIN	GB00BHSRZC82
TIDM	EWI

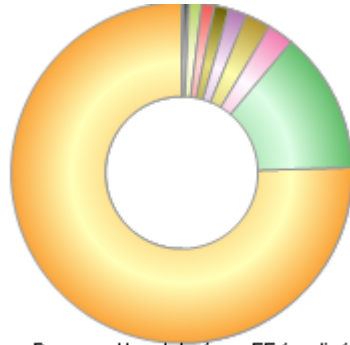
Contact Details

Address	Calton Square, 1 Greenside Row, Edinburgh, EH1 3AN
Telephone numbers	+44 (0) 131 275 2000 (Main Number)
Website	www.bailliegifford.com
Email	enquiries@bailliegifford.com

Edinburgh Worldwide IT PLC Ord

Asset Allocation (31 May 2024)

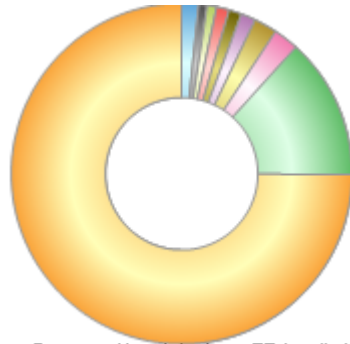
Rank	Asset Classes	%
1	North America Equities	75.50
2	UK Equities	13.40
3	Israel Equities	2.50
4	China Equities	2.40
5	Australasia Equities	1.70
6	France Equities	1.40
7	Japan Equities	1.20
8	Denmark Equities	1.20
9	Others Equities	0.60
10	Net Liquid Assets	0.10



Powered by data from FE fundinfo

Regional Breakdown (31 May 2024)

Rank	Regions	%
1	USA	74.99
2	UK	13.40
3	China	2.36
4	Israel	2.20
5	France	1.36
6	Denmark	1.23
7	Japan	1.17
8	Australia	0.90
9	New Zealand	0.82
10	Others	1.57



Powered by data from FE fundinfo

Top Holdings (31 May 2024)

Rank	Largest Holdings	%
1	Space Exploration Technologies	11.92
2	Alnylam Pharmaceuticals	5.07
3	PsiQuantum	4.98
4	AeroVironment	4.59
5	Oxford Nanopore Tech	2.83
6	Axon Enterprise	2.65
7	Zillow	2.41
8	STAAR Surgical	2.30
9	Ocado	2.18
10	Exact Sciences	1.97