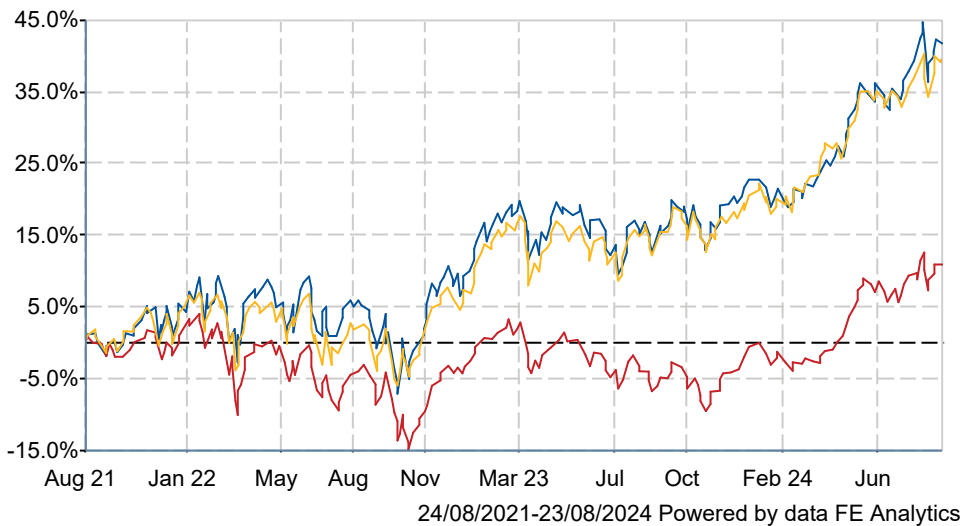


Edinburgh Investment Tst plc

What is the Fund's objective?

The Company aims to invest primarily in UK securities with the long-term objective of achieving an increase of the Net Asset Value (NAV) per share in excess of the growth in the FTSE All-Share Index and growth in dividends per share in excess of the rate of UK inflation. The Company is actively managed within its objectives and is not constrained by a benchmark. The Company borrows money to invest in the stock market within prescribed limits with the aim of enhancing returns. The Company may use derivatives (contracts whose value is linked to the value of an underlying investment) with the aim of reducing risk, reducing costs and/or generating additional capital or income. The Net Asset Value (NAV) return of the Company corresponds directly to the performance of the securities in which it invests and the income from them. The share price, which will determine the return to the investor, will also be affected by supply and demand. Consequently, the return to the investor may be higher or lower than the underlying NAV return. At any given time, the price you pay for a share will typically be higher than the price at which you could sell it..


Cumulative Performance



	3m	6m	1yr	3yrs	5yrs
Edinburgh Investment Tst plc	+5.2	+16.9	+23.7	+41.5	+74.6
UK Equity Income	+2.3	+14.0	+18.0	+10.7	+38.9
NAV	+3.4	+14.8	+23.5	+39.9	+62.8
Rank within sector	3 / 18	6 / 18	5 / 18	2 / 18	2 / 18
Quartile	1	2	1	1	1

Sector	UK Equity Income
Asset Class	Equity
Launch Date	30-Dec-1964
Fund Size	£1,144.9m / \$1,510.6m (23-Aug-2024)
Fund Manager	Imran Sattar Emily Barnard

How does FE fundinfo rate this fund?

FE fundinfo Crown Rating	
Risk Score	114

Investment Details

Initial Charge	n/a
Annual Charges	0.40%
Note to charges	n/a
Minimum Initial Investment	n/a
Minimum Additional Investment	n/a
Dividend Policy	n/a

Management Contract

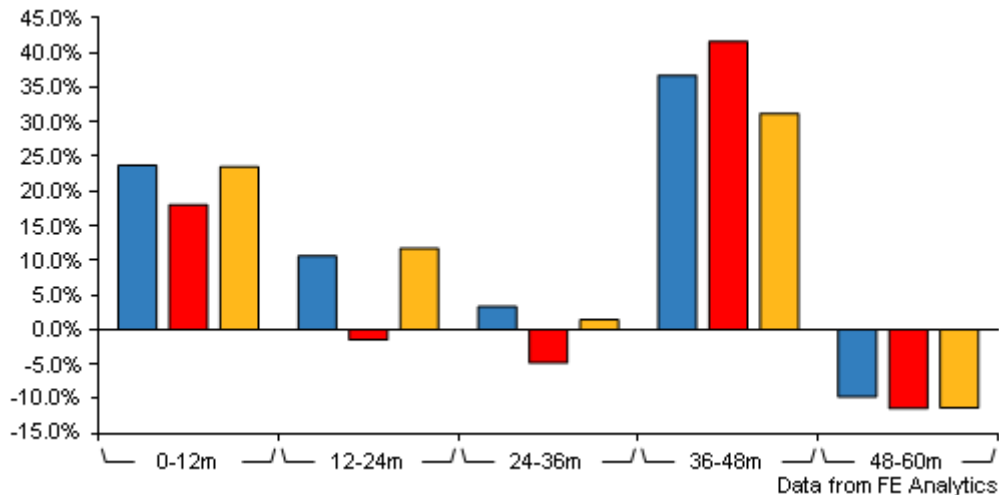
Majedie is entitled to an annual management charge of 0.48% p.a. of the first £500m of the Company's market capitalisation, and 0.465% p.a. on the balance above £500m.

Prices

Unit Type	INC
Mid	765.00(GBX)
Price Date	23 Aug 2024
Yield	3.56
Discount	-8.56
Diluted NAV	
- Estimate	836.61
- Last Published	836.61 (22-Aug-2024)

Edinburgh Investment Tst plc

Discrete Performance



	0-12m	12m-24m	24m-36m	36m-48m	48m-60m
Edinburgh Investment Tst plc	+23.7	+10.6	+3.3	+36.7	-9.7
UK Equity Income	+18.0	-1.5	-4.8	+41.6	-11.4
NAV	+23.5	+11.7	+1.4	+31.2	-11.3
Rank within sector	5 / 18	1 / 18	5 / 18	11 / 18	8 / 18
Quartile	1	1	1	3	2

All prices in Pence Sterling (GBX) unless otherwise specified. Price total return performance figures are calculated using closing mid prices and with net income (dividends) reinvested. NAV total return performance figures are calculated using fully diluted (where applicable) daily estimated NAV figures from Thomson Financial Datastream. Performance figures are shown in Pound Sterling (GBP).

Codes

Citicode	EB06
SEDOL	0305233
ISIN	GB0003052338
TIDM	EDIN

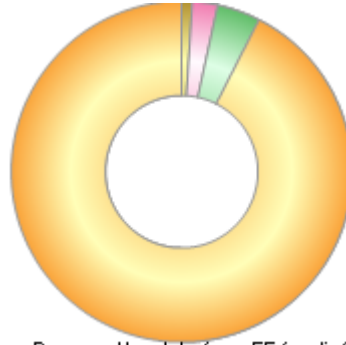
Contact Details

Address	2 Savoy Court, London, United Kingdom, WC2R 0EZ
Telephone numbers	20 7412 1700 (Main Number)
Website	www.liontrust.co.uk
Email	LionTA@liontrust.co.uk

Edinburgh Investment Tst plc

Asset Allocation (31 Jul 2024)

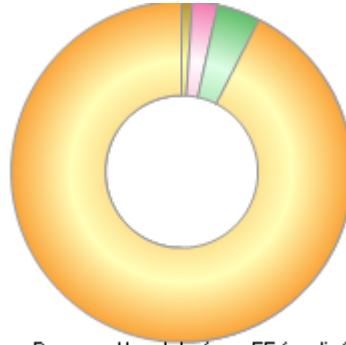
Rank	Asset Classes	%
1	UK Equities	92.52
2	US Equities	4.08
3	Money Market	2.41
4	Finnish Equities	0.99



Powered by data from FE fundinfo

Regional Breakdown (31 Jul 2024)

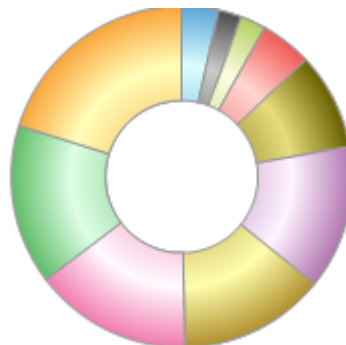
Rank	Regions	%
1	UK	92.52
2	USA	4.08
3	Cash & Cash Equivalents	2.41
4	Finland	0.99



Powered by data from FE fundinfo

Sector Breakdown (31 Jul 2024)

Rank	Sectors	%
1	Industrials	20.15
2	Financials	15.19
3	Consumer Discretionary	15.00
4	Consumer Staples	13.90
5	Health Care	13.65
6	Energy	9.18
7	Technology	4.85
8	Money Market	2.41
9	Basic Materials	2.21
10	Others	3.46



Powered by data from FE fundinfo

Top Holdings (31 Jul 2024)

Rank	Largest Holdings	%
1	Shell plc	7.63
2	UNILEVER PLC	5.27

Edinburgh Investment Tst plc

Rank	Largest Holdings	%
3	COMPASS GROUP PLC	4.79
4	Haleon plc.	4.09
5	Tesco PLC	4.07
6	Dunelm Group plc	3.96
7	AstraZeneca	3.68
8	GSK plc	3.68
9	NatWest Group Plc	3.62
10	London Stock Exchange Group plc	3.22