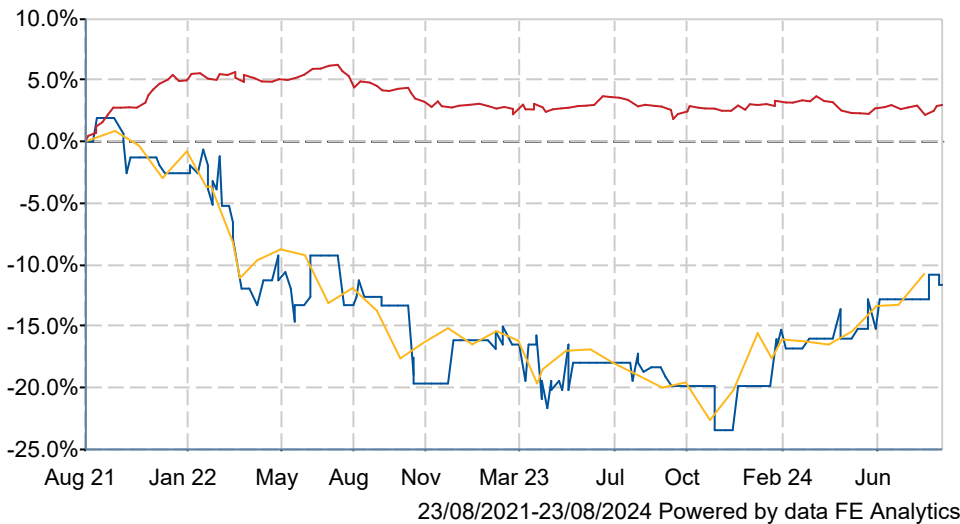


# Baronsmead Venture Trust PLC

## What is the Fund's objective?

Baronsmead Venture Trust plc (the "Company") is a tax efficient listed company which aims to achieve long-term investment returns for private investors, including tax-free dividends.

## Cumulative Performance



	3m	6m	1yr	3yrs	5yrs
■ Baronsmead Venture Trust PLC	+4.2	+6.2	+8.2	-11.6	+15.1
■ VCT	+0.6	-0.4	+0.1	+3.0	+12.6
■ NAV	+5.5	+6.4	+10.2	-10.7	+12.8
Rank within sector	12 / 44	7 / 43	10 / 43	31 / 41	23 / 38
Quartile	2	1	1	3	3

Sector	VCT
Asset Class	Equity
Launch Date	01-Apr-1998
Fund Size	£207.0m / \$273.1m (23-Aug-2024)
Fund Manager	Ken Wotton Ed Wass Trevor Hope

## How does FE fundinfo rate this fund?

FE fundinfo Crown Rating	Fund in unrated sector
Risk Score	<b>81</b>

## Investment Details

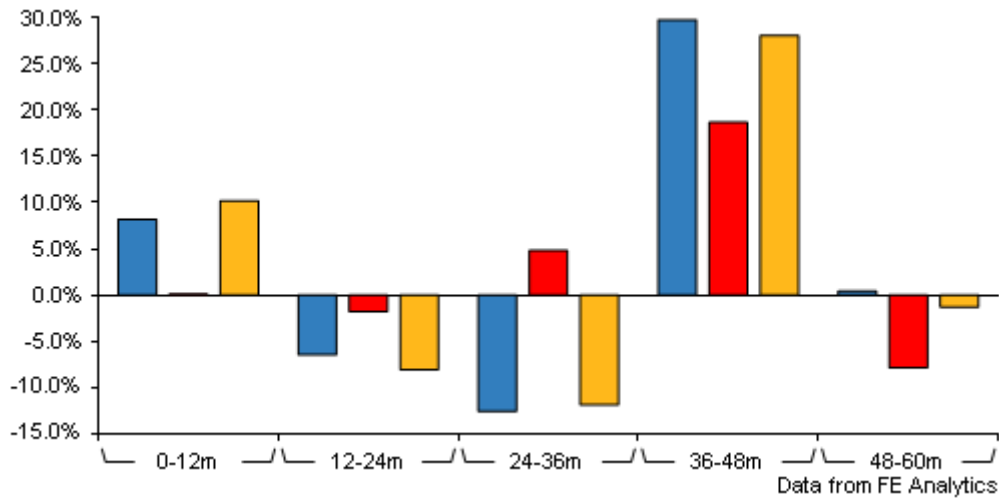
Initial Charge	n/a
Annual Charges	2.00%
Note to charges	n/a
Minimum Initial Investment	n/a
Minimum Additional Investment	n/a
Dividend Policy	n/a

## Management Contract

Livingbridge VC LLP and its related predecessor businesses have managed Baronsmead VCT plc since its incorporation in November 1995. The Manager aims bring capital and strategic support to profitable growth businesses that have ambitious management, scalable business models and potential for market leadership. The Manager also provides and procures the provision of secretarial, administrative and custodian services of the Company. The management agreement may be terminated at any date by either party giving twelve months' notice of termination. The Manager receives a fee of 2 per cent per annum of the net assets of the Company. In addition, the Manager also receives an annual administration fee of '50,000 (linked to the movement in RPI), subject to annual review.

# Baronsmead Venture Trust PLC

## Discrete Performance



	0-12m	12m-24m	24m-36m	36m-48m	48m-60m
Baronsmead Venture Trust PLC	+8.2	-6.5	-12.6	+29.8	+0.4
VCT	+0.1	-1.8	+4.8	+18.7	-7.9
NAV	+10.2	-8.1	-11.9	+28.1	-1.3
Rank within sector	10 / 43	31 / 42	37 / 41	9 / 41	5 / 38
Quartile	1	3	4	1	1

All prices in Pence Sterling (GBX) unless otherwise specified. Price total return performance figures are calculated using closing mid prices and with net income (dividends) reinvested. NAV total return performance figures are calculated using fully diluted (where applicable) daily estimated NAV figures from Thomson Financial Datastream. Performance figures are shown in Pound Sterling (GBP).

## Prices

Unit Type	INC
Mid	53.50(GBX)
Price Date	23 Aug 2024
Yield	7.94
Discount	-9.11
Diluted NAV	
- Estimate	58.86
- Last Published	58.86 (31-Jul-2024)

## Codes

Citicode	IM12
SEDOL	0263193
ISIN	GB0002631934
TIDM	BVT

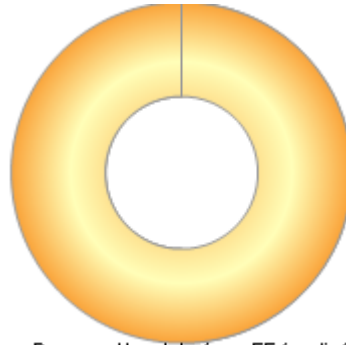
## Contact Details

Address	80 Cheapside London, EC2V 6EE
Telephone numbers	44 20 3837 6276 (Main Number)
Website	<a href="http://www.greshamhouse.com">www.greshamhouse.com</a>
Email	<a href="mailto:info@greshamhouse.com">info@greshamhouse.com</a>

# Baronsmead Venture Trust PLC

## Asset Allocation (31 Dec 2023)

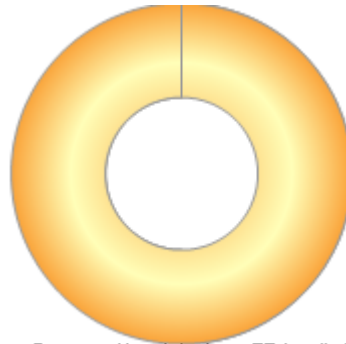
Rank	Asset Classes	%
1	United Kingdom Equities	100.00



Powered by data from FE fundinfo

## Regional Breakdown (31 Dec 2023)

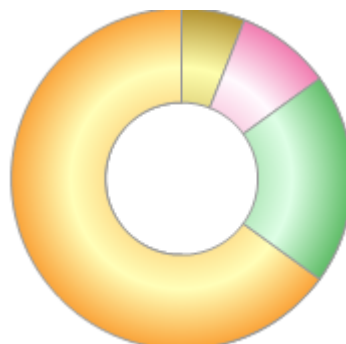
Rank	Regions	%
1	United Kingdom	100.00



Powered by data from FE fundinfo

## Sector Breakdown (31 Dec 2023)

Rank	Sectors	%
1	Technology	65.00
2	Healthcare & education	20.00
3	Business services	9.00
4	Consumer markets	6.00



Powered by data from FE fundinfo

## Top Holdings (31 Dec 2023)

Rank	Largest Holdings	%
1	Cerillion plc	12.30

# Baronsmead Venture Trust PLC

Rank	Largest Holdings	%
2	Netcall plc	4.30
3	Patchworks Integration Ltd	3.20
4	IDOX plc	2.20
5	Airfinity Ltd	2.10
6	Bioventix plc	2.00
7	eConsult Health Ltd	1.80
8	Popsa Holdings Ltd	1.50
9	Clarilis Ltd	1.20
10	Scurri Web Services Ltd	1.20