

Baillie Gifford China Growth Trust PLC Ord 25P

What is the Fund's objective?

The Trust aims to produce long term capital growth by investing in an actively managed portfolio of Chinese companies. Up to a maximum of 20% of assets may be invested in companies not listed on a public market (measured at time of purchase).

Cumulative Performance



	3m	6m	1yr	3yrs	5yrs
■ Baillie Gifford China Growth Trust PLC Ord 25P	+19.7	+8.2	-0.5	-49.7	-24.1
■ China/Greater China	+27.6	+12.7	+4.3	-45.2	+7.7
■ NAV	+16.3	+1.5	-7.3	-43.0	-27.2
Rank within sector	3 / 3	3 / 3	2 / 3	2 / 3	3 / 3
Quartile	4	4	2	2	4

Fund Information

Sector	China/Greater China
Asset Class	Equity
Launch Date	24-Jan-1907
Fund Size	£138.0m / \$175.3m (17-May-2024)
Fund Manager	Sophie Earnshaw Linda Lin

How does FE fundinfo rate this fund?

FE fundinfo Crown Rating	Fund in unrated sector
AFI	NO
Risk Score	223

Investment Details

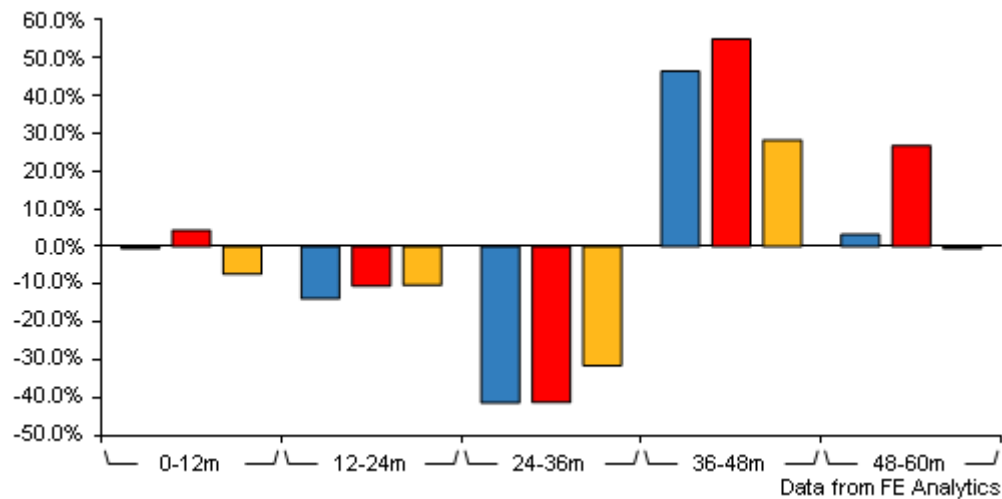
Initial Charge	n/a
Annual Charges	0.64%
Note to charges	n/a
Minimum Initial Investment	n/a
Minimum Additional Investment	n/a
Dividend Policy	n/a
Management Contract	n/a

Prices

Unit Type	INC
Mid	228.00(GBX)
Price Date	20 May 2024
Yield	0.89
Discount	-7.07
Diluted NAV	
- Estimate	243.79
- Last Published	243.79 (17-May-2024)

Baillie Gifford China Growth Trust PLC Ord 25P

Discrete Performance



	0-12m	12m-24m	24m-36m	36m-48m	48m-60m
Baillie Gifford China Growth Trust PLC Ord 25P	-0.5	-13.8	-41.4	+46.4	+3.2
China/Greater China	+4.3	-10.4	-41.3	+54.9	+26.7
NAV	-7.3	-10.2	-31.5	+28.2	-0.5
Rank within sector	2 / 3	2 / 3	2 / 3	3 / 3	3 / 3
Quartile	2	2	2	4	4

All prices in Pence Sterling (GBX) unless otherwise specified. Price total return performance figures are calculated using closing mid prices and with net income (dividends) reinvested. NAV total return performance figures are calculated using fully diluted (where applicable) daily estimated NAV figures from Thomson Financial Datastream. Performance figures are shown in Pound Sterling (GBP).

Codes

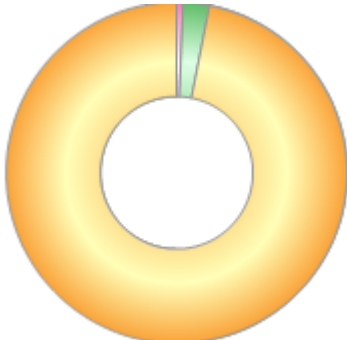
Citicode	IL49
SEDOL	0365602
ISIN	GB0003656021
TIDM	BGCG

Contact Details

Address	Calton Square, 1 Greenside Row, Edinburgh, EH1 3AN
Telephone numbers	+44 (0) 131 275 2000 (Main Number)
Website	www.bailliegifford.com
Email	enquiries@bailliegifford.com

Asset Allocation (30 Apr 2024)

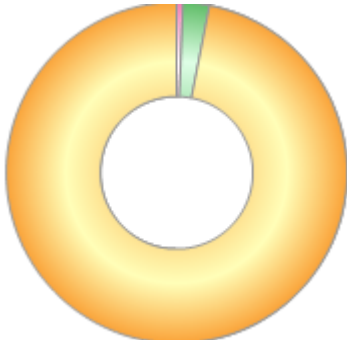
Rank	Asset Classes	%
1	Emerging Markets Equity	96.95
2	Developed Asia Equity	2.48
3	Cash	0.57



Powered by data from FE fundinfo

Regional Breakdown (30 Apr 2024)

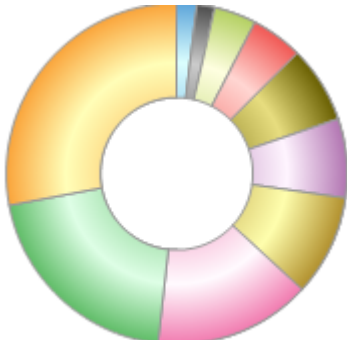
Rank	Regions	%
1	China	96.95
2	Hong Kong	2.48
3	Cash and Deposits	0.57



Powered by data from FE fundinfo

Sector Breakdown (30 Apr 2024)

Rank	Sectors	%
1	Consumer Discretionary	27.95
2	Communication Services	20.25
3	Industrials	14.92
4	Consumer Staples	9.58
5	Financials	7.53
6	Information Technology	7.28
7	Health Care	4.91
8	Materials	3.96
9	Utilities	1.71
10	Others	1.91



Powered by data from FE fundinfo

Top Holdings (30 Apr 2024)

Rank	Largest Holdings	%
1	Tencent	9.45
2	ByteDance	7.84

Baillie Gifford China Growth Trust PLC Ord 25P

Rank	Largest Holdings	%
3	Kweichow Moutai	5.38
4	Alibaba	5.20
5	Meituan	4.62
6	China Merchants Bank	3.38
7	Ping An Insurance	2.83
8	CATL	2.68
9	PDD Holdings	2.50
10	Midea	2.47