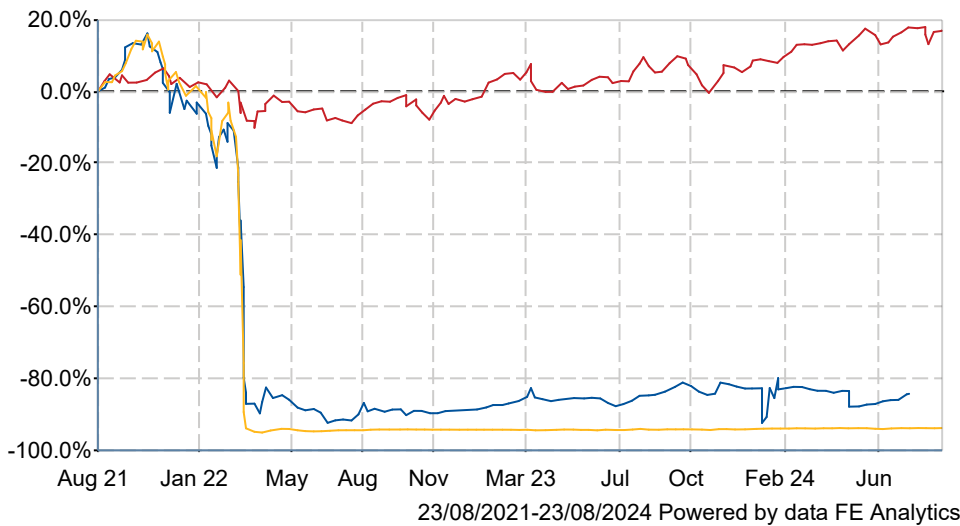


# JPMorgan Emerging Europe Middle East & Africa Securities plc ORD 1P ORD 1P

## What is the Fund's objective?

The company aims to maximise total return to shareholders from a diversified portfolio of investments primarily in quoted Russian securities.

## Cumulative Performance




	3m	6m	1yr	3yrs	5yrs
JPMorgan Emerging Europe Middle East & Africa Securities plc ORD 1P ORD 1P	+23.6	-10.7	-0.3	-84.3	-82.4
Global Emerging Markets	+0.7	+3.3	+11.4	+16.9	+33.0
NAV	+2.2	+1.1	+6.7	-93.9	-92.4
Rank within sector	1 / 10	10 / 10	9 / 10	10 / 10	10 / 10
Quartile	1	4	4	4	4

## Fund Information

Sector	Global Emerging Markets
Asset Class	Equity
Launch Date	20-Dec-2002
Fund Size	£47.9m / \$63.2m [23-Aug-2024]
Fund Manager	Oleg Biryulyov Habib Saikaly

## How does FE fundinfo rate this fund?

FE fundinfo Crown Rating	
Risk Score	1089

## Investment Details

Initial Charge	0.00%
Annual Charges	1.00%
Note to charges	n/a
Minimum Initial Investment	£ 1,000
Minimum Additional Investment	£ 100
Dividend Policy	n/a

## Management Contract

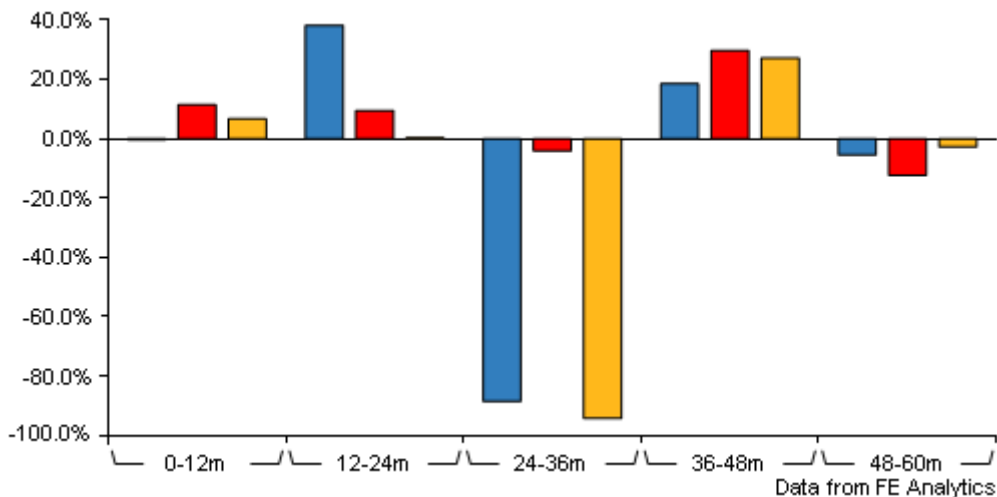
The management contract can be terminated on 90 days notice. The Manager is remunerated at a rate of 1.2% per annum of the Company's net assets. When the Company invests in funds managed or advised by JPMAM or any of its associated companies, they are excluded from the calculation and therefore attract no fee.

## Prices

Unit Type	ACC
Mid	118.50(GBX)
Price Date	23 Aug 2024
Yield	0.42
Discount	141.68
Diluted NAV	
- Estimate	49.86
- Last Published	49.86 [22-Aug-2024]

# JPMorgan Emerging Europe Middle East & Africa Securities plc ORD 1P ORD 1P

## Discrete Performance



	0-12m	12m-24m	24m-36m	36m-48m	48m-60m
JPMorgan Emerging Europe Middle East & Africa Securities plc ORD 1P ORD 1P	-0.3	+38.2	-88.6	+18.5	-5.5
Global Emerging Markets	+11.4	+9.5	-4.1	+29.7	-12.3
NAV	+6.7	+0.3	-94.3	+27.2	-2.8
Rank within sector	9 / 10	1 / 10	10 / 10	8 / 10	5 / 10
Quartile	4	1	4	4	2

All prices in Pence Sterling (GBX) unless otherwise specified. Price total return performance figures are calculated using closing mid prices and with net income (dividends) reinvested. NAV total return performance figures are calculated using fully diluted (where applicable) daily estimated NAV figures from Thomson Financial Datastream. Performance figures are shown in Pound Sterling (GBP).

## Codes

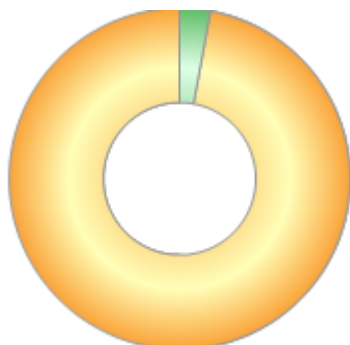
Citicode	HX56
SEDOL	3216473
ISIN	GB0032164732
TIDM	JEMA

## Contact Details

Address	25 Bank St, Canary Wharf, London, E14 5JP
Telephone numbers	0800 727 770 (Main Number)
Website	<a href="http://am.jpmorgan.com/uk">am.jpmorgan.com/uk</a>
Email	<a href="mailto:uk.sales.support@jpmorgan.com">uk.sales.support@jpmorgan.com</a>

### Asset Allocation (30 Jun 2024)

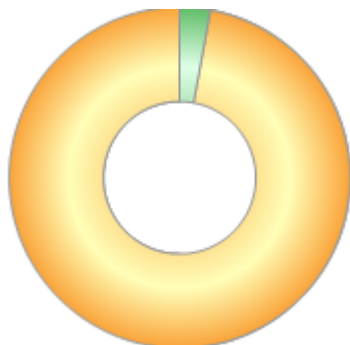
Rank	Asset Classes	%
1	Russian Equities	97.10
2	Cash	2.90



Powered by data from FE fundinfo

### Regional Breakdown (30 Jun 2024)

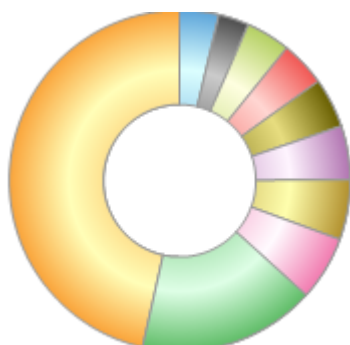
Rank	Regions	%
1	Russia	97.10
2	Cash	2.90



Powered by data from FE fundinfo

### Sector Breakdown (30 Jun 2024)

Rank	Sectors	%
1	Financials	46.50
2	Energy	16.80
3	Consumer Discretionary	6.10
4	Industrials	5.70
5	Materials	5.10
6	Consumer Staples	4.70
7	Communication Services	4.30
8	Real Estate	4.20
9	Cash	2.90
10	Others	3.70



Powered by data from FE fundinfo

### Top Holdings (30 Jun 2024)

Rank	Largest Holdings	%
1	Saudi National Bank	3.10
2	Al Rajhi Bank	2.80

# JPMorgan Emerging Europe Middle East & Africa Securities plc ORD 1P ORD 1P

Rank	Largest Holdings	%
3	FirstRand	2.70
4	JPM GBP LIQUIDITY LVNAV FUND	2.60
5	Standard Bank	2.20
6	Saudi Arabian Oil	2.10
7	Qatar National Bank	1.90
8	Emaar Properties	1.80
9	Gold Fields	1.80
10	PKO Bank	1.80