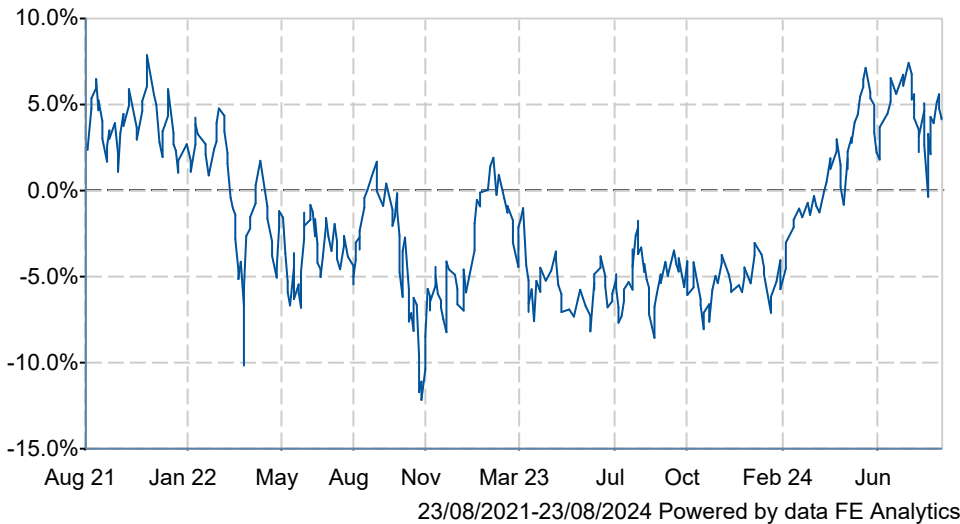


## iShares Emerging Markets Equity Index (UK) D Acc

### What is the Fund's objective?

The Fund aims to provide a return on your investment (generated through an increase in the value of the assets held by the Fund) by tracking closely the performance of the FTSE Emerging Index, the Fund's benchmark index. The Fund is passively managed and the investment manager has limited discretion to select the Fund's investments and in doing so may take into consideration the benchmark index. The Fund invests in equity securities (e.g. shares) of companies that make up the benchmark index. The benchmark index measures the performance of equity securities of leading companies listed in the emerging markets. The benchmark index is a free float-adjusted market capitalisation weighted index. Free float-adjusted means that only shares readily available in the market rather than all of a company's issued shares are used in calculating the benchmark index. Free float-adjusted market capitalisation is the share price of a company multiplied by the number of shares readily available in the market.

### Cumulative Performance



	3m	6m	1yr	3yrs	5yrs
iShares Emerging Markets Equity Index (UK) D Acc	-1.5	+5.2	+11.7	+4.1	+19.6

Benchmark	n/a
Asset Class	Equity
Launch Date	20-Nov-2009
Fund Size	£4,022.9m / \$5,307.8m (31-Jul-2024)

### How does FE fundinfo rate this fund?

FE fundinfo Passive Rating	 P
Risk Score	106

### Investment Details

Initial Charge	0.00%
Annual Charges	0.12%
Note to charges	Initial Charges: Max.;
Minimum Initial Investment	£ 100,000
Minimum Additional Investment	£ 100
Dividend Policy	Mar 01 (Final), Sep 01

### Prices

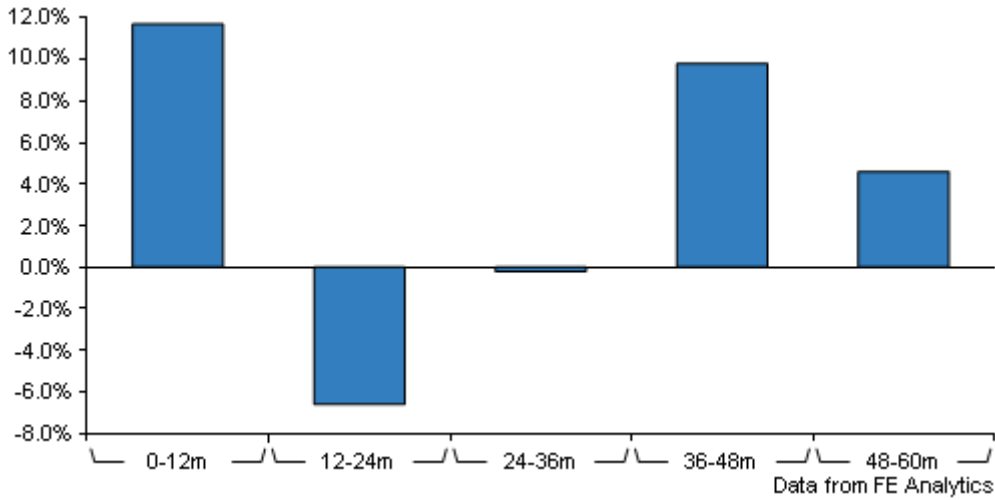
Unit Type	ACC
Mid	195.41[GBX]
Price Date	23 Aug 2024
Yield	2.55

### Codes

Citicode	G6HZ
SEDOL	B84DY64
ISIN	GB00B84DY642

# iShares Emerging Markets Equity Index (UK) D Acc

## Discrete Performance



	0-12m	12m-24m	24m-36m	36m-48m	48m-60m
iShares Emerging Markets Equity Index (UK) D Acc	+11.7	-6.6	-0.2	+9.8	+4.6

All prices in Pence Sterling (GBX) unless otherwise specified. Price total return performance figures are calculated on a bid price to bid price basis (mid to mid for OEICs) with net income (dividends) reinvested. Performance figures are shown in Pound Sterling (GBP).

## Contact Details

**Address** 12 Throgmorton Avenue,  
London, EC2N 2DL

**Telephone numbers** 020 7743 1000 (Fax Number)  
0800 445 522 (Main Number)

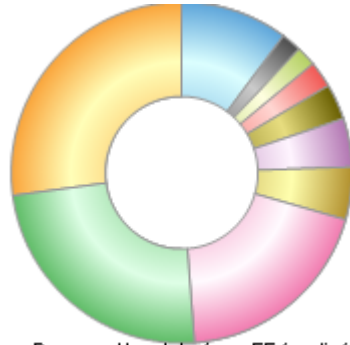
**Website** [www.blackrock.co.uk](http://www.blackrock.co.uk)

**Email** [uk.investor@blackrock.com](mailto:uk.investor@blackrock.com)

# iShares Emerging Markets Equity Index (UK) D Acc

## Asset Allocation (31 Jul 2024)

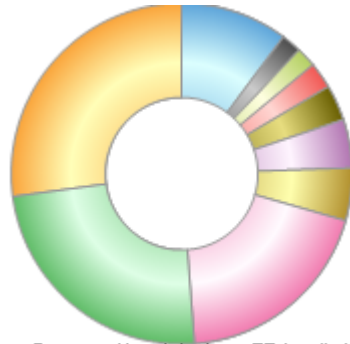
Rank	Asset Classes	%
1	Chinese Equities	27.22
2	Indian Equities	24.08
3	Taiwanese Equities	19.42
4	Brazilian Equities	4.96
5	Saudi Arabian Equities	4.55
6	South African Equities	3.36
7	Mexican Equities	2.49
8	Malaysian Equities	1.90
9	Indonesian Equities	1.86
10	Others	10.16



Powered by data from FE fundinfo

## Regional Breakdown (31 Jul 2024)

Rank	Regions	%
1	China	27.22
2	India	24.08
3	Taiwan (Republic of China)	19.42
4	Brazil	4.96
5	Saudi Arabia	4.55
6	South Africa	3.36
7	Mexico	2.49
8	Malaysia	1.90
9	Indonesia	1.86
10	Others	10.16



Powered by data from FE fundinfo

## Sector Breakdown (31 Jul 2024)

Rank	Sectors	%
1	Technology	26.12
2	Financials	22.86
3	Consumer Discretionary	11.16
4	Industrials	8.31
5	Energy	6.49
6	Basic Materials	6.11
7	Consumer Staples	5.47
8	Telecommunications	4.15
9	Utilities	3.93
10	Others	5.40



Powered by data from FE fundinfo

## Top Holdings (31 Jul 2024)

Rank	Largest Holdings	%
1	TAIWAN SEMICONDUCTOR MANUFACTURING	9.32
2	TENCENT HOLDINGS LTD	3.98

## iShares Emerging Markets Equity Index (UK) D Acc

Rank	Largest Holdings	%
3	ALIBABA GROUP HOLDING LTD	2.28
4	RELIANCE INDUSTRIES LTD	1.62
5	HDFC BANK LTD	1.43
6	PDD HOLDINGS ADS INC	1.23
7	INFOSYS LTD	1.06
8	MEITUAN	1.02
9	HON HAI PRECISION INDUSTRY LTD	0.98
10	CHINA CONSTRUCTION BANK CORP H	0.89