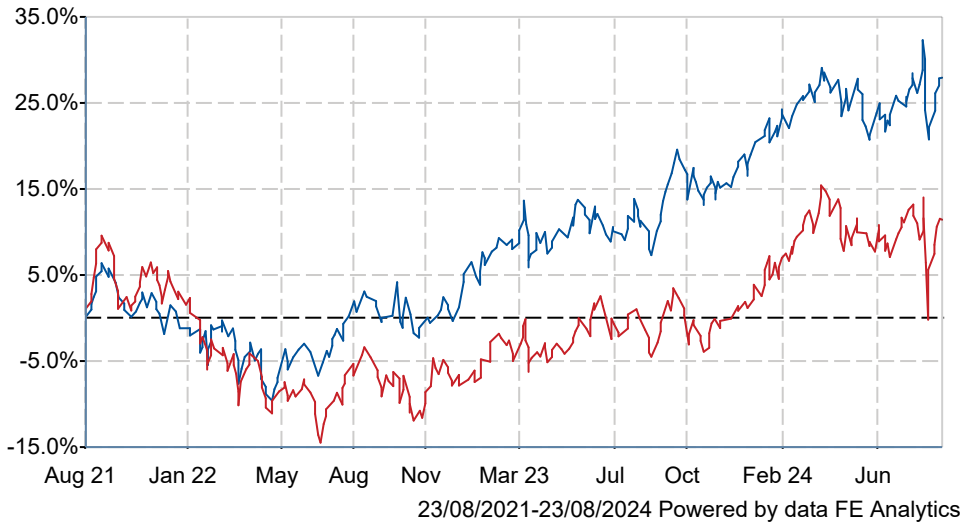


Polar Capital Japan Value S Inc GBP

What is the Fund's objective?

The objective of the Fund is to achieve long term capital growth by investing in the shares of Japanese companies, or companies that generate a significant amount of their business in Japan.


Cumulative Performance



	3m	6m	1yr	3yrs	5yrs
■ Polar Capital Japan Value S Inc GBP	+5.5	+2.8	+17.0	+27.9	+34.0
■ IA Japan	+2.4	+1.6	+14.1	+11.4	+34.8
Rank within sector	10 / 103	28 / 102	24 / 102	15 / 97	50 / 92
Quartile	1	2	1	1	3

Sector	IA Japan
Asset Class	Equity
Launch Date	31-Oct-2012
Fund Size	£202.7m / \$267.4m (22-Aug-2024)
Fund Manager	Gerard Cawley Chris Smith

How does FE fundinfo rate this fund?

FE fundinfo Crown Rating	
Risk Score	131

Investment Details

Initial Charge	0.00%
Annual Charges	0.60%
Note to charges	Initial Charges: max.;
Minimum Initial Investment	£ 1,000,000
Minimum Additional Investment	n/a
Dividend Policy	Jan 01 (Final)

Prices

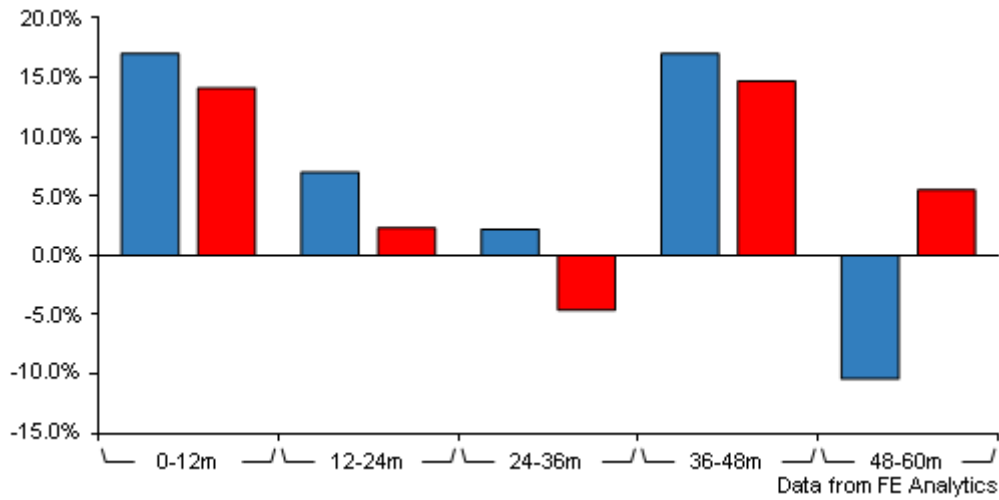
Unit Type	INC
Mid	2.24(GBP)
Price Date	23 Aug 2024
Yield	n/a

Codes

Citicode	GVHH
SEDOL	B6TBKM7
ISIN	IE00B6TBKM73

Polar Capital Japan Value S Inc GBP

Discrete Performance



	0-12m	12m-24m	24m-36m	36m-48m	48m-60m
■ Polar Capital Japan Value S Inc GBP	+17.0	+7.0	+2.2	+17.0	-10.4
■ IA Japan	+14.1	+2.3	-4.6	+14.7	+5.5
Rank within sector	24 / 102	22 / 101	14 / 97	23 / 94	90 / 92
Quartile	1	1	1	1	4

All prices in Pence Sterling (GBX) unless otherwise specified. Price total return performance figures are calculated on a bid price to bid price basis (mid to mid for OEICs) with net income (dividends) reinvested. Performance figures are shown in Pound Sterling (GBP).

Contact Details

Address 16 Palace Street, London, United Kingdom, SW1E 5JD

Telephone numbers +44 (0) 20 7227 2799 (Fax Number)
+44 (0) 20 7227 2700 (Main Number)

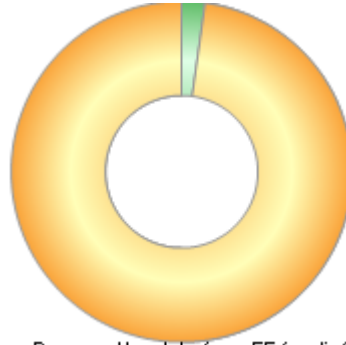
Website www.polarcapital.co.uk

Email Investor-Relations@polarcapital.co.uk

Polar Capital Japan Value S Inc GBP

Asset Allocation (28 Jun 2024)

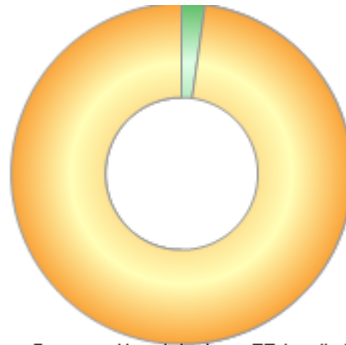
Rank	Asset Classes	%
1	Japanese Equities	97.84
2	Money Market	2.16



Powered by data from FE fundinfo

Regional Breakdown (28 Jun 2024)

Rank	Regions	%
1	Japan	97.84
2	Cash & Cash Equivalents	2.16



Powered by data from FE fundinfo

Sector Breakdown (28 Jun 2024)

Rank	Sectors	%
1	Electronic & Electrical Equipment	18.89
2	Services	12.08
3	Communications	9.89
4	Banks	9.49
5	Transport Equipment	7.61
6	Wholesale	6.69
7	Machinery	6.49
8	Chemicals	5.52
9	Precision Instruments	4.04
10	Others	19.30



Powered by data from FE fundinfo

Top Holdings (28 Jun 2024)

Rank	Largest Holdings	%
1	SK KAKEN CO LTD	3.08
2	MITSUBISHI UFJ FINANCIAL GRO	2.98

Polar Capital Japan Value S Inc GBP

Rank	Largest Holdings	%
3	ROHM CO LTD	2.85
4	SUMITOMO MITSUI FINANCIAL GR	2.85
5	DAIWA INDUSTRIES LTD	2.83
6	SUZUKI MOTOR CORP	2.75
7	MEDIKIT CO LTD	2.65
8	USHIO INC	2.61
9	SOHGO SECURITY SERVICES CO	2.49
10	YAKULT HONSHA CO LTD	2.44