

Fund Information

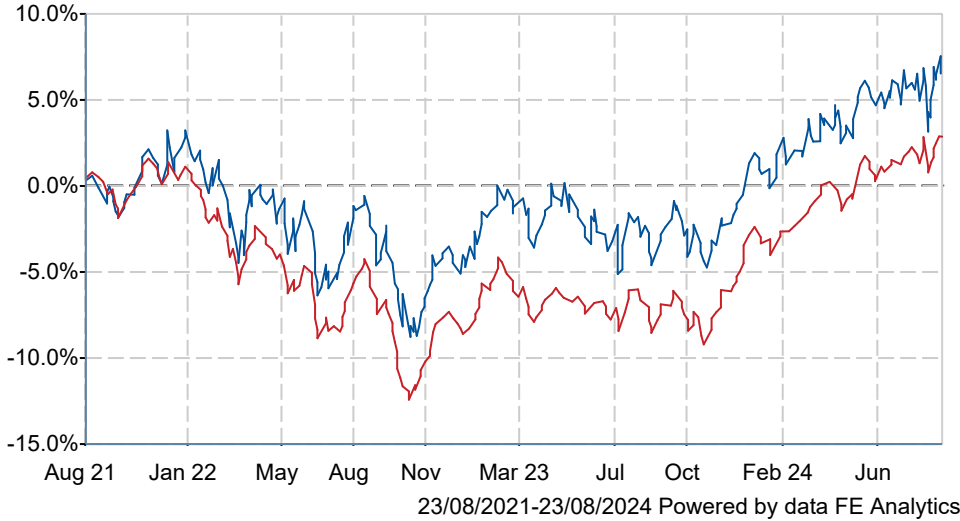
Sector	IA Mixed Investment 20-60% Shares
Asset Class	Mixed Asset
Launch Date	14-Sep-1992
Fund Size	£1,640.1m / \$2,163.9m (23-Aug-2024)
Fund Manager	John Chatfeild- Roberts Amanda Sillars David Lewis George Fox

Jupiter Merlin Income Portfolio I Acc

What is the Fund's objective?


To provide a return, through a combination of income together with the prospect of capital growth, net of fees, over the long term (at least five years).

Cumulative Performance



	3m	6m	1yr	3yrs	5yrs
Jupiter Merlin Income Portfolio I Acc	+0.8	+4.2	+11.1	+6.5	+19.6
IA Mixed Investment 20-60% Shares	+1.6	+5.0	+12.2	+2.8	+16.1
Rank within sector	162 / 192	148 / 191	139 / 188	41 / 169	50 / 149
Quartile	4	4	3	1	2

How does FE fundinfo rate this fund?

Alpha Manager Rating	John Chatfeild- Roberts
FE fundinfo Crown Rating	
Risk Score	64

Other ratings

Morningstar Analyst Rating	Neutral
----------------------------	----------------

Investment Details

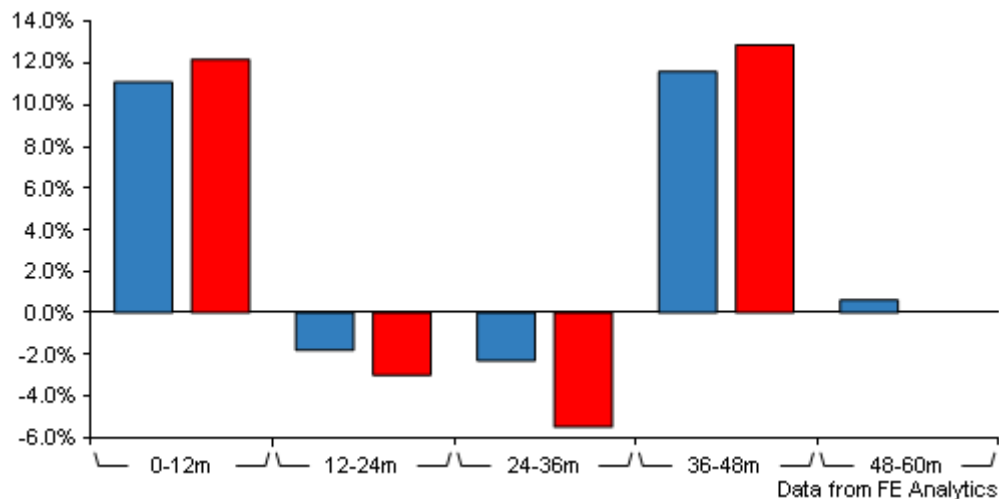
Initial Charge	0.00%
Annual Charges	n/a
Note to charges	n/a
Minimum Initial Investment	£ 1,000,000
Minimum Additional Investment	£ 50,000
Dividend Policy	Jan 16, Apr 16, Jul 16, Oct 16 (Final)

Prices

Unit Type	ACC
Mid	399.19(GBX)
Price Date	23 Aug 2024
Yield	3.13

Jupiter Merlin Income Portfolio I Acc

Discrete Performance



	0-12m	12m-24m	24m-36m	36m-48m	48m-60m
■ Jupiter Merlin Income Portfolio I Acc	+11.1	-1.8	-2.3	+11.6	+0.6
■ IA Mixed Investment 20-60% Shares	+12.2	-3.0	-5.5	+12.9	+0.0
Rank within sector	139 / 188	41 / 175	34 / 169	106 / 158	68 / 149
Quartile	3	1	1	3	2

All prices in Pence Sterling (GBX) unless otherwise specified. Price total return performance figures are calculated on a bid price to bid price basis (mid to mid for OEICs) with net income (dividends) reinvested. Performance figures are shown in Pound Sterling (GBP).

Codes

Citicode	09PZ
SEDOL	B4N2L74
ISIN	GB00B4N2L746

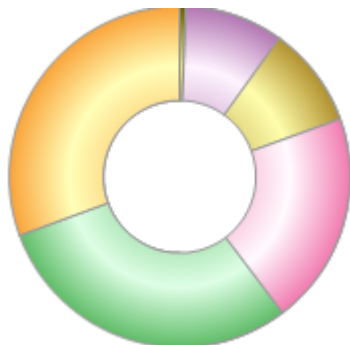
Contact Details

Address	The Zig Zag Building, 70 Victoria Street, London, United Kingdom, SW1E 6SQ
Telephone numbers	+44 (0)20 3817 1000 (Dealing & Administration) +44 (0)20 3817 1063 (Main Number)
Website	www.jupiteram.com
Email	clientservices@jupiteram.com

Jupiter Merlin Income Portfolio I Acc

Asset Allocation (31 Jul 2024)

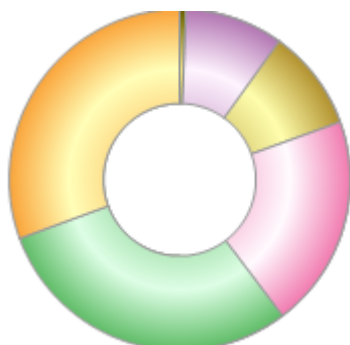
Rank	Asset Classes	%
1	Fixed Income	30.60
2	UK Equities	29.70
3	Global Equities	20.20
4	Japanese Equities	9.60
5	Other	9.30
6	Cash	0.60



Powered by data from FE fundinfo

Regional Breakdown (31 Jul 2024)

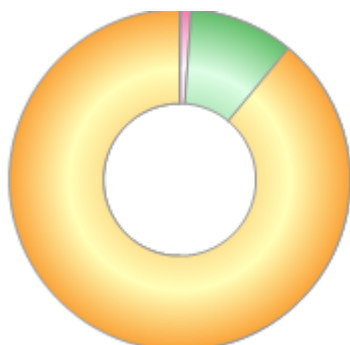
Rank	Regions	%
1	Fixed Income	30.60
2	UK Equities	29.70
3	Global Equities	20.20
4	Japanese Equities	9.60
5	Other	9.30
6	Cash	0.60



Powered by data from FE fundinfo

Sector Breakdown (30 Apr 2024)

Rank	Sectors	%
1	Others	89.02
2	Financials	9.86
3	Money Market	1.04
4	Basic Materials	0.08



Powered by data from FE fundinfo

Top Holdings (30 Apr 2024)

Rank	Largest Holdings	%
1	Ifsl Evenlode Income Fund	13.88
2	M&G Global Corporate Bond	11.84

Jupiter Merlin Income Portfolio I Acc

Rank	Largest Holdings	%
3	MAN GLG UK Income	11.23
4	Aegon High Yield Bond	9.39
5	Morant Wright Nippon Yield	9.19
6	Royal London Global Equity Income	7.10
7	Jupiter Global Value Equity	7.07
8	Mayfair Capital Commercial Propert	6.49
9	BlueBox Global Technology	5.69
10	Jupiter Income Trust	4.30