



Jupiter Merlin Conservative Select I Acc

What is the Fund's objective?

To provide a return, through a combination of capital growth and income, net of fees, over the long-term (at least five years).

Cumulative Performance




	3m	6m	1yr	3yrs	5yrs
 Jupiter Merlin Conservative Select I Acc	+2.4	+4.9	+12.9	-0.1	+11.8
 IA Mixed Investment 0-35% Shares	+2.0	+4.3	+10.3	-2.1	+6.2
Rank within sector	23 / 66	17 / 64	6 / 64	21 / 58	8 / 45
Quartile	2	2	1	2	1

Fund Information

Sector	IA Mixed Investment 0-35% Shares
Asset Class	Mixed Asset
Launch Date	28-Sep-2012
Fund Size	£168.8m / \$222.7m (23-Aug-2024)
Fund Manager	John Chatfeild-Roberts Amanda Sillars David Lewis George Fox

How does FE fundinfo rate this fund?

Alpha Manager Rating	John Chatfeild-Roberts
FE fundinfo Crown Rating	
Risk Score	62

Other ratings

Morningstar Analyst Rating	
----------------------------	---

Investment Details

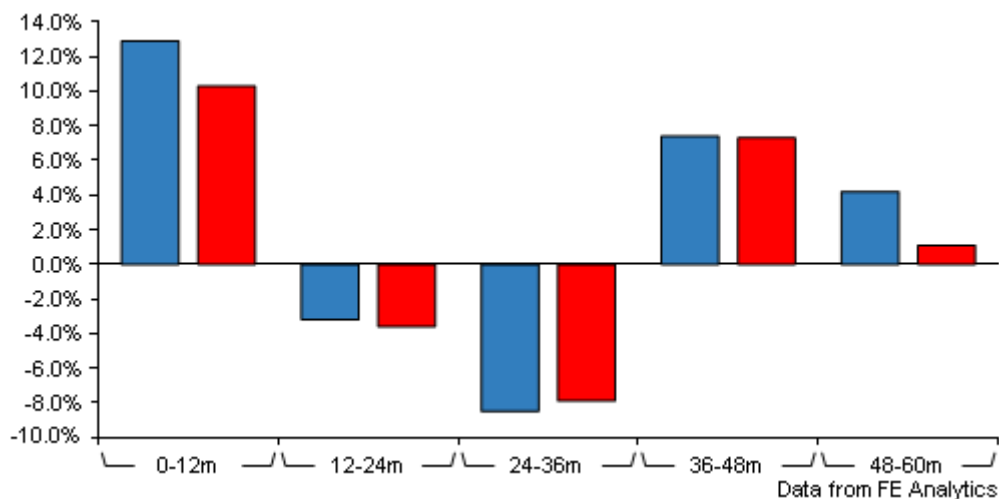
Initial Charge	0.00%
Annual Charges	n/a
Note to charges	n/a
Minimum Initial Investment	£ 1,000,000
Minimum Additional Investment	£ 50,000
Dividend Policy	Mar 01, Jun 01, Sep 01, Dec 01 (Final)

Prices

Unit Type	ACC
Mid	77.41(GBX)
Price Date	23 Aug 2024
Yield	3.95

Jupiter Merlin Conservative Select I Acc

Discrete Performance



	0-12m	12m-24m	24m-36m	36m-48m	48m-60m
Jupiter Merlin Conservative Select I Acc	+12.9	-3.2	-8.5	+7.4	+4.2
IA Mixed Investment 0-35% Shares	+10.3	-3.6	-7.9	+7.3	+1.1
Rank within sector	6 / 64	22 / 60	38 / 58	28 / 50	3 / 45
Quartile	1	2	3	3	1

All prices in Pence Sterling (GBX) unless otherwise specified. Price total return performance figures are calculated on a bid price to bid price basis (mid to mid for OEICs) with net income (dividends) reinvested. Performance figures are shown in Pound Sterling (GBP).

Codes

Citicode	G3CI
SEDOL	B8GDLS3
ISIN	GB00B8GDLS36

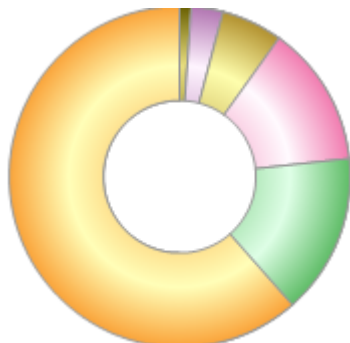
Contact Details

Address	The Zig Zag Building, 70 Victoria Street, London, United Kingdom, SW1E 6SQ
Telephone numbers	+44 (0)20 3817 1000 (Dealing & Administration) +44 (0)20 3817 1063 (Main Number)
Website	www.jupiteram.com
Email	clientservices@jupiteram.com

Jupiter Merlin Conservative Select I Acc

Asset Allocation (31 Jul 2024)

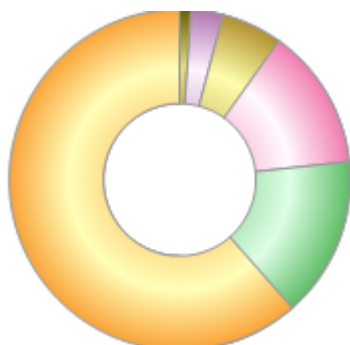
Rank	Asset Classes	%
1	Fixed Income	61.50
2	Global Equities	15.20
3	UK Equities	13.40
4	Japanese Equities	5.80
5	Other	3.00
6	Cash	1.10



Powered by data from FE fundinfo

Regional Breakdown (31 Jul 2024)

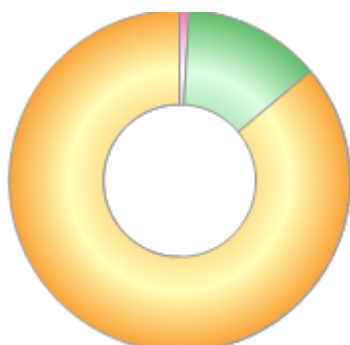
Rank	Regions	%
1	Fixed Income	61.50
2	Global Equities	15.20
3	UK Equities	13.40
4	Japanese Equities	5.80
5	Other	3.00
6	Cash	1.10



Powered by data from FE fundinfo

Sector Breakdown (30 Apr 2024)

Rank	Sectors	%
1	Others	86.04
2	Financials	13.03
3	Money Market	0.93



Powered by data from FE fundinfo

Top Holdings (30 Apr 2024)

Rank	Largest Holdings	%
1	Jupiter Corporate Bond	33.90
2	Jupiter Global Value	10.08

Jupiter Merlin Conservative Select I Acc

Rank	Largest Holdings	%
3	M&G Global Corporate Bond	9.87
4	Jupiter Global High Yield Bond	9.22
5	Evenlode Income	6.24
6	Morant Wright Nippon Yield	5.63
7	Jupiter Income Trust	5.15
8	Jupiter Strategic Bond	4.56
9	BlueBox Global Technology	3.74
10	Jupiter Global Sovereign Opportunities	3.66