

GS Japan Equity Partners Portfolio R (Snap) Acc

What is the Fund's objective?

The Portfolio seeks to provide capital growth over the longer term.

Cumulative Performance



	3m	6m	1yr	3yrs	5yrs
■ GS Japan Equity Partners Portfolio R (Snap) Acc	+1.0	+7.4	+20.9	+5.3	+41.9
■ Equity - Japan	-5.0	-0.6	+12.1	+5.8	+22.9
Rank within sector	3 / 108	3 / 108	12 / 103	56 / 92	15 / 80
Quartile	1	1	1	3	1

Sector	Equity - Japan
Asset Class	Equity
Launch Date	27-May-2015
Fund Size	£3,091.1m / \$4,010.4m (30-Oct-2024)
Fund Manager	Ichiro Kosuge

How does FE fundinfo rate this fund?

FE fundinfo Crown Rating	★★★★★
Risk Score	189

Investment Details

Initial Charge	5.50%
Annual Charges	0.75%
Note to charges	n/a
Minimum Initial Investment	£ 500,000
Minimum Additional Investment	n/a
Dividend Policy	Dec 12 (Final)

Prices

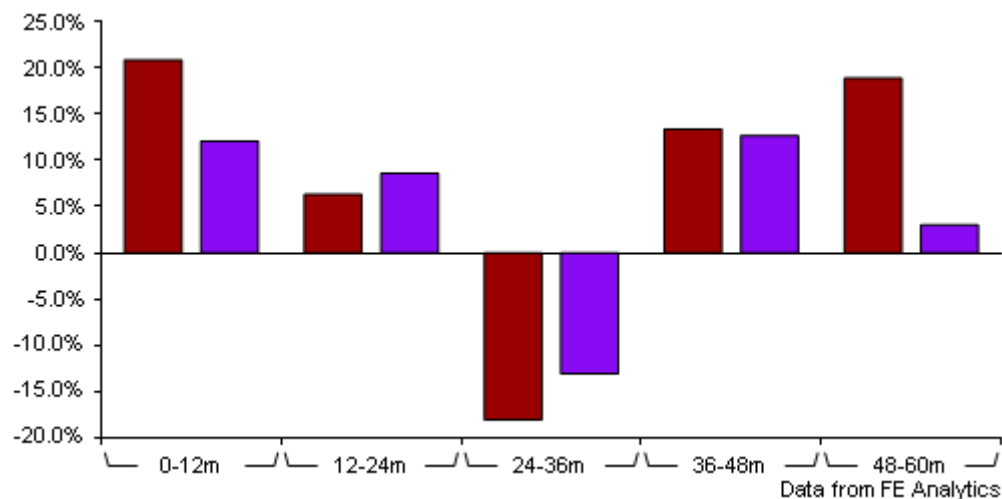
Unit Type	ACC
Mid	27137.47(JPY)
Price Date	30 Oct 2024
Yield	n/a

Codes

Citicode	FUQG
SEDOL	BWV62J3
ISIN	LU1217871307

GS Japan Equity Partners Portfolio R (Snap) Acc

Discrete Performance



	0-12m	12m-24m	24m-36m	36m-48m	48m-60m
GS Japan Equity Partners Portfolio R (Snap) Acc	+20.9	+6.3	-18.1	+13.4	+18.9
Equity - Japan	+12.1	+8.6	-13.1	+12.7	+3.0
Rank within sector	12 / 103	68 / 100	67 / 92	34 / 87	13 / 80
Quartile	1	3	3	2	1

Price total return performance figures are calculated on a bid price to bid price basis (mid to mid where applicable) with gross income (dividends) reinvested. Performance figures are shown in Pound Sterling (GBP).

Contact Details

Address Plumtree Court 25 Shoe Lane
London United Kingdom, EC4A
4AU

Telephone numbers +44 207 774 6366 (Main Number)

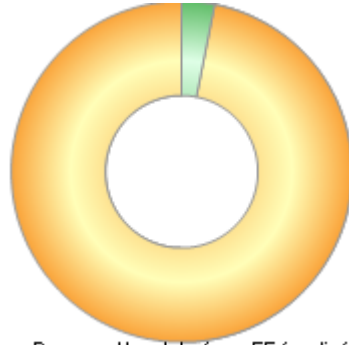
Website www.gsam.com

Email GSAMFundData@ny.email.gs.com

GS Japan Equity Partners Portfolio R (Snap) Acc

Asset Allocation (30 Sep 2024)

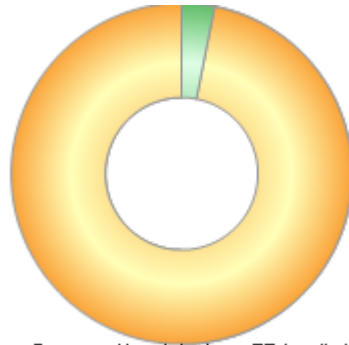
Rank	Asset Classes	%
1	Japanese Equities	96.89
2	Money Market	3.11



Powered by data from FE fundinfo

Regional Breakdown (30 Sep 2024)

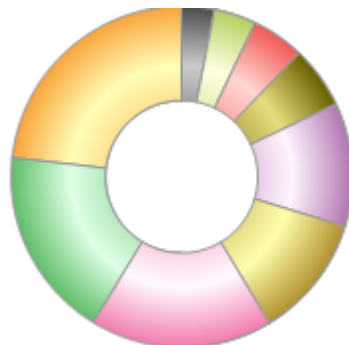
Rank	Regions	%
1	Japan	96.89
2	Cash & Cash Equivalents	3.11



Powered by data from FE fundinfo

Sector Breakdown (30 Sep 2024)

Rank	Sectors	%
1	Consumer Discretionary	23.24
2	Information Technology	18.08
3	Industrials	17.25
4	Financials	11.71
5	Health Care	11.66
6	Materials	5.90
7	Consumer Staples	5.03
8	Communications	4.03
9	Money Market	3.11



Powered by data from FE fundinfo

Top Holdings (30 Sep 2024)

Rank	Largest Holdings	%
1	Hitachi Ltd	6.48
2	Sony Group Corp	5.43

GS Japan Equity Partners Portfolio R (Snap) Acc

Rank	Largest Holdings	%
3	Tokio Marine Holdings Inc	4.59
4	Shin-Etsu Chemical Co Ltd	4.58
5	Fast Retailing Co Ltd	4.45
6	NEC Corp	4.27
7	Mitsubishi UFJ Financial Group Inc	4.20
8	Capcom Co Ltd	4.03
9	Nitori Holdings Co Ltd	3.77
10	Pan Pacific International Holdings Corp	3.44