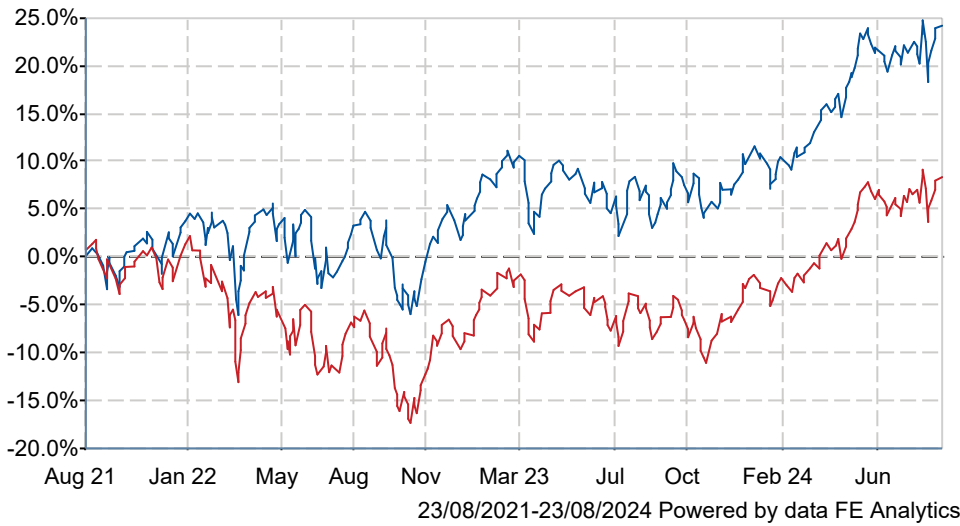


JPM UK Equity Core E Net Acc

What is the Fund's objective?

The Fund aims to provide capital growth and outperform the FTSE TM All-Share Index (Net) over the long term by investing primarily in a portfolio of UK companies.

Cumulative Performance



	3m	6m	1yr	3yrs	5yrs
JPM UK Equity Core E Net Acc	+0.9	+11.7	+19.7	+24.2	+40.5
IA UK All Companies	+1.0	+10.3	+18.2	+8.3	+30.8
Rank within sector	114 / 231	67 / 231	69 / 229	44 / 223	40 / 211
Quartile	2	2	2	1	1

Sector	IA UK All Companies
Asset Class	Equity
Launch Date	01-Jun-1997
Fund Size	£1,165.4m / \$1,537.6m (23-Aug-2024)
Fund Manager	Christopher Llewelyn James Illsley Callum Abbot Zach Chadwick

How does FE fundinfo rate this fund?

FE fundinfo Crown Rating	
Risk Score	101

Investment Details

Initial Charge	0.00%
Annual Charges	0.25%
Note to charges	n/a
Minimum Initial Investment	£ 1,000
Minimum Additional Investment	£ 100
Dividend Policy	Feb 01 (Final)

Prices

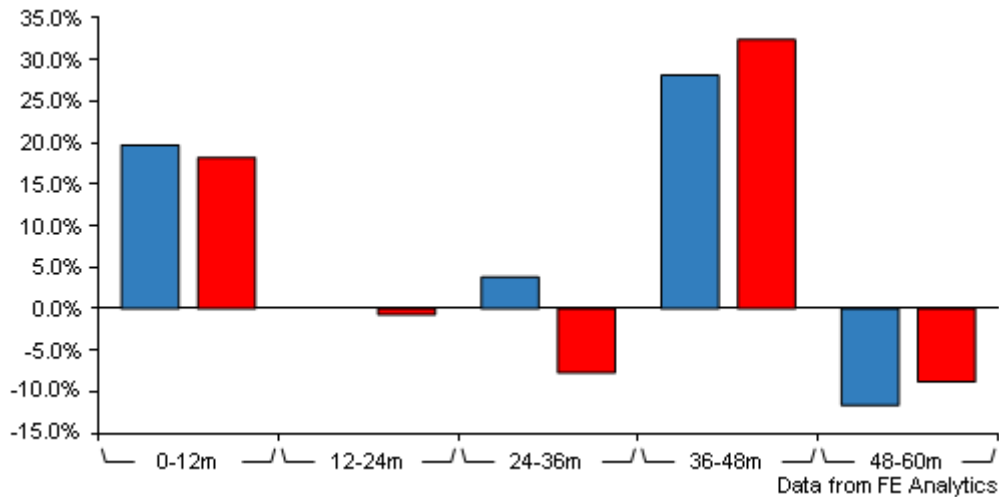
Unit Type	ACC
Mid	513.90(GBX)
Price Date	23 Aug 2024
Yield	3.26

Codes

Citicode	MJQ9
SEDOL	B55QSH0
ISIN	GB00B55QSH09

JPM UK Equity Core E Net Acc

Discrete Performance



	0-12m	12m-24m	24m-36m	36m-48m	48m-60m
JPM UK Equity Core E Net Acc	+19.7	+0.0	+3.8	+28.1	-11.6
IA UK All Companies	+18.2	-0.7	-7.7	+32.4	-8.8
Rank within sector	69 / 229	119 / 228	49 / 223	114 / 218	131 / 211
Quartile	2	3	1	3	3

All prices in Pence Sterling (GBX) unless otherwise specified. Price total return performance figures are calculated on a bid price to bid price basis (mid to mid for OEICs) with net income (dividends) reinvested. Performance figures are shown in Pound Sterling (GBP).

Contact Details

Address 60 Victoria Embankment, London, E
0JP

Telephone numbers +44-1268444470 (Main Number)

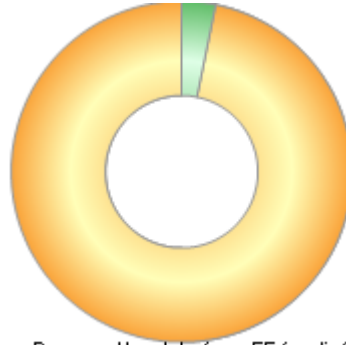
Website www.jpmorganassetmanagement.com

Email ifaenquiry@jpmorgan.com

JPM UK Equity Core E Net Acc

Regional Breakdown (30 Jun 2024)

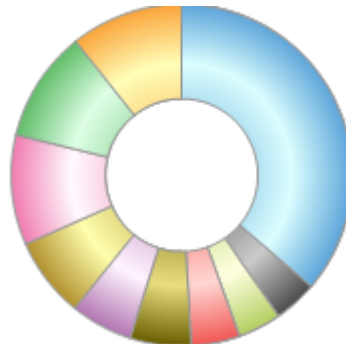
Rank	Regions	%
1	UK	96.80
2	Cash	3.20



Powered by data from FE fundinfo

Sector Breakdown (31 Jul 2024)

Rank	Sectors	%
1	Oil, Gas And Coal	10.70
2	Pharmaceuticals And Biotechnology	10.50
3	Banks	10.40
4	Personal Care, Drug And Grocery Stores	7.60
5	Industrial Metals And Mining	5.90
6	Investment Banking And Brokerage Service	5.80
7	Industrial Support Services	4.60
8	Media	4.10
9	Cash	4.10
10	Others	36.30



Powered by data from FE fundinfo

Top Holdings (31 Jul 2024)

Rank	Largest Holdings	%
1	AstraZeneca	7.30
2	Shell	7.20
3	HSBC	5.40
4	Unilever	4.40
5	BP	3.20
6	Relx	2.80
7	GSK	2.60
8	Rio Tinto	2.30
9	British American Tobacco	2.20
10	Glencore	2.00