

JPM UK Smaller Companies C Acc

What is the Fund's objective?

To provide capital growth over the long-term (5- 10 years) by investing at least 80% of the Fund's assets in small capitalisation UK companies.


Cumulative Performance



	3m	6m	1yr	3yrs	5yrs
JPM UK Smaller Companies C Acc	+2.1	+13.3	+26.7	-9.0	+50.4
IA UK Smaller Companies	+1.5	+13.2	+20.2	-17.4	+27.6
Rank within sector	19 / 48	21 / 48	5 / 48	9 / 47	6 / 46
Quartile	2	2	1	1	1

Sector	IA UK Smaller Companies
Asset Class	Equity
Launch Date	16-Jul-1987
Fund Size	£203.3m / \$266.0m (23-Aug-2024)
Fund Manager	Georgina Brittain Katen Patel

How does FE fundinfo rate this fund?

FE fundinfo Crown Rating	
Risk Score	133

Investment Details

Initial Charge	0.00%
Annual Charges	0.70%
Note to charges	Initial Charges: max.;
Minimum Initial Investment	£ 5,000,000
Minimum Additional Investment	£ 100,000
Dividend Policy	Dec 01 (Final)

Prices

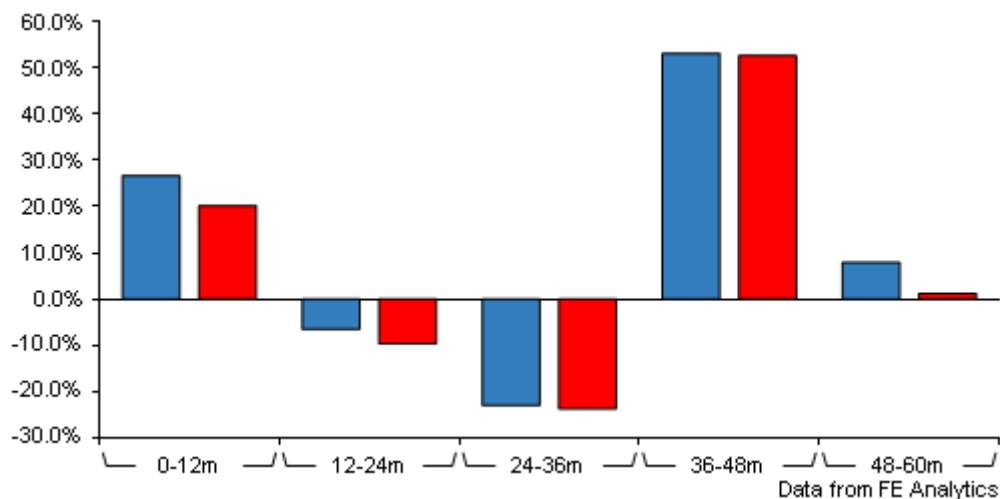
Unit Type	ACC
Mid	742.50(GBX)
Price Date	23 Aug 2024
Yield	2.19

Codes

Citicode	GROO
SEDOL	B84LQR3
ISIN	GB00B84LQR33

JPM UK Smaller Companies C Acc

Discrete Performance



	0-12m	12m-24m	24m-36m	36m-48m	48m-60m
JPM UK Smaller Companies C Acc	+26.7	-6.6	-23.1	+53.2	+7.9
IA UK Smaller Companies	+20.2	-9.7	-23.8	+52.7	+1.2
Rank within sector	5 / 48	9 / 48	24 / 47	20 / 46	11 / 46
Quartile	1	1	2	2	1

All prices in Pence Sterling (GBX) unless otherwise specified. Price total return performance figures are calculated on a bid price to bid price basis (mid to mid for OEICs) with net income (dividends) reinvested. Performance figures are shown in Pound Sterling (GBP).

Contact Details

Address 60 Victoria Embankment, London EC4Y 0JP, EC4Y 0JP

Telephone numbers 0800 727 770 (Main Number)

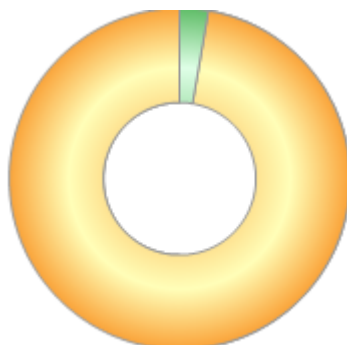
Website www.jpmorganassetmanagement.com

Email ifaenquiry@jpmorgan.com

JPM UK Smaller Companies C Acc

Asset Allocation (28 Jun 2024)

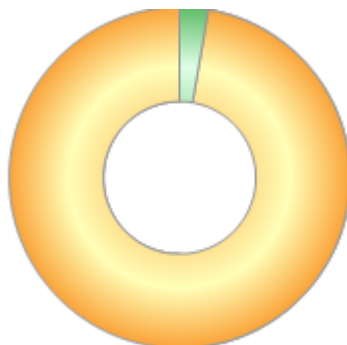
Rank	Asset Classes	%
1	UK Equities	97.30
2	Cash	2.70



Powered by data from FE fundinfo

Regional Breakdown (28 Jun 2024)

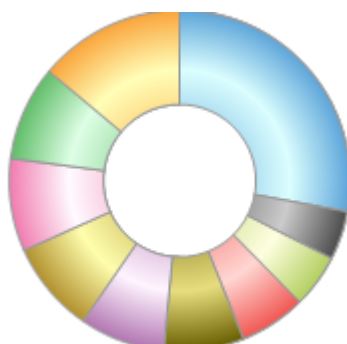
Rank	Regions	%
1	UK	97.30
2	Cash	2.70



Powered by data from FE fundinfo

Sector Breakdown (31 May 2024)

Rank	Sectors	%
1	Investment Banking And Brokerage Service	13.90
2	Oil, Gas And Coal	9.00
3	Travel And Leisure	8.80
4	Media	8.70
5	Industrial Support Services	8.10
6	Software And Computer Services	7.60
7	Construction And Materials	6.30
8	Banks	5.10
9	Household Goods And Home Construction	4.60
10	Others	27.90



Powered by data from FE fundinfo

Top Holdings (31 May 2024)

Rank	Largest Holdings	%
1	Ashtead Technology	5.10

JPM UK Smaller Companies C Acc

Rank	Largest Holdings	%
2	Bank of Georgia	4.80
3	4IMPrint	3.60
4	Premier Foods	3.30
5	iShares FTSE 250 UCITS ETF	3.00
6	Jet2	2.90
7	Alpha Group International	2.50
8	Redrow	2.50
9	Cerillion	2.20
10	XPS Pensions	2.00