

## GS Europe High Yield Bond Portfolio R Hedged GBP

### What is the Fund's objective?

The investment objective of these Portfolios will be updated in order to reflect the promotion of environmental and social characteristics in the investment process implemented by the Investment Adviser and these Portfolios will further integrate additional ESG criteria and/or ESG factors, as further described in the Portfolio's relevant investment policy.



### Cumulative Performance



	3m	6m	1yr	3yrs	5yrs
■ GS Europe High Yield Bond Portfolio R Hedged GBP	+3.0	+3.9	+12.7	+6.7	+18.4
■ IA Sterling High Yield	+2.8	+4.4	+12.1	+5.7	+16.8
Rank within sector	12 / 30	23 / 30	13 / 29	16 / 29	12 / 25
Quartile	2	4	2	3	2

Sector	IA Sterling High Yield
Asset Class	Fixed Interest
Launch Date	17-Jun-2014
Fund Size	£85.1m / \$112.3m (23-Aug-2024)
Fund Manager	Fiona Macnab Aakash Thombre

### How does FE fundinfo rate this fund?

FE fundinfo Crown Rating	
Risk Score	

### Investment Details

Initial Charge	5.50%
Annual Charges	0.50%
Note to charges	n/a
Minimum Initial Investment	£ 3,000
Minimum Additional Investment	n/a
Dividend Policy	Jan 31, Feb 28, Mar 31, Apr 30, May 31, Jun 30, Jul 31, Aug 31, Sep 30, Oct 31, Nov 30, Dec 12 (Final)

### Prices

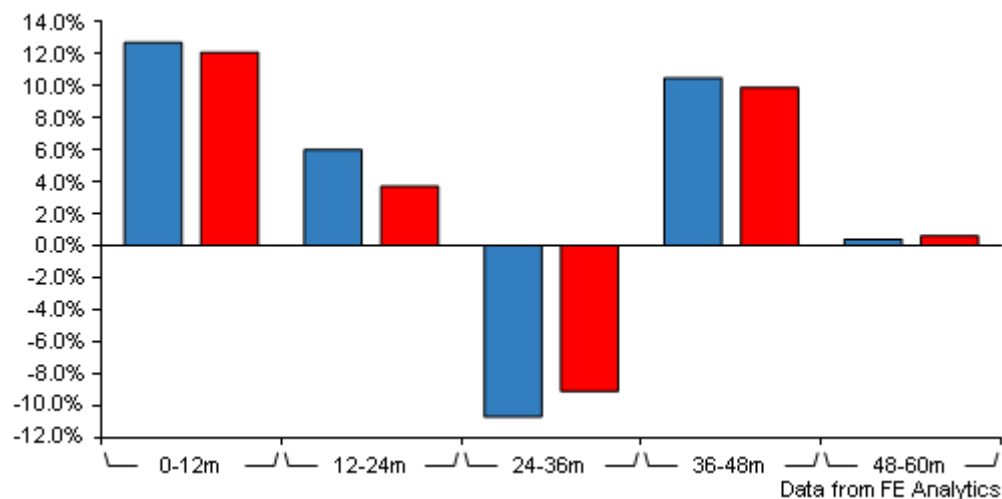
Unit Type	INC
Mid	107.06(GBP)
Price Date	23 Aug 2024
Yield	n/a

### Codes

Citicode	FKPG
SEDOL	BN326R2
ISIN	LU1073189091

# GS Europe High Yield Bond Portfolio R Hedged GBP

## Discrete Performance



	0-12m	12m-24m	24m-36m	36m-48m	48m-60m
GS Europe High Yield Bond Portfolio R Hedged GBP	+12.7	+6.0	-10.7	+10.5	+0.4
IA Sterling High Yield	+12.1	+3.7	-9.1	+9.9	+0.6
Rank within sector	13 / 29	5 / 29	19 / 29	10 / 27	17 / 25
Quartile	2	1	3	2	3

All prices in Pence Sterling (GBX) unless otherwise specified. Price total return performance figures are calculated on a bid price to bid price basis (mid to mid for OEICs) with net income (dividends) reinvested. Performance figures are shown in Pound Sterling (GBP).

## Contact Details

**Address** Plumtree Court 25 Shoe Lane  
London United Kingdom, EC4A 4AU

**Telephone numbers** +44 207 774 6366 (Main Number)

**Website** [www.gsam.com](http://www.gsam.com)

**Email** [GSAMFundData@ny.email.gs.com](mailto:GSAMFundData@ny.email.gs.com)

# GS Europe High Yield Bond Portfolio R Hedged GBP

## Asset Allocation (31 Jul 2024)

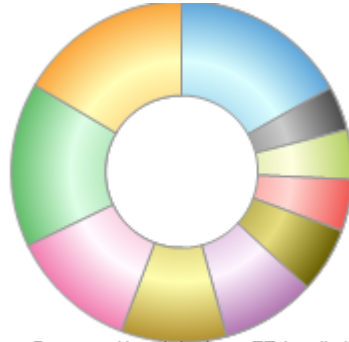
Rank	Asset Classes	%
1	French Corporate Fixed Interest	15.62
2	UK Corporate Fixed Interest	14.32
3	US Corporate Fixed Interest	13.82
4	German Corporate Fixed Interest	12.14
5	Spanish Corporate Fixed Interest	8.87
6	Italian Corporate Fixed Interest	6.20
7	Greek Corporate Fixed Interest	4.94
8	Dutch Corporate Fixed Interest	4.74
9	Swedish Corporate Fixed Interest	4.18
10	Others	15.17



Powered by data from FE fundinfo

## Regional Breakdown (31 Jul 2024)

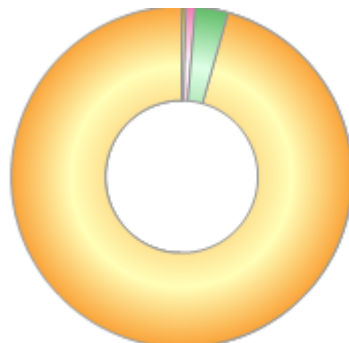
Rank	Regions	%
1	EU	16.50
2	France	15.63
3	Germany	12.14
4	USA	9.99
5	Spain	8.87
6	Italy	6.20
7	Greece	4.94
8	Netherlands	4.74
9	Sweden	4.18
10	Others	16.81



Powered by data from FE fundinfo

## Sector Breakdown (31 Jul 2024)

Rank	Sectors	%
1	Corporate Bonds	95.74
2	Cash Funds	3.07
3	Money Market	0.89
4	Technology	0.38
5	Electricity Supply	0.04
6	Non-Cyclical Consumer Goods	0.01
7	Futures	0.00
8	Derivatives	-0.05
9	Forwards	-0.09



Powered by data from FE fundinfo

## Top Holdings (31 Jul 2024)

Rank	Largest Holdings	%
1	TELEFONICA EUROPE B.V. 6.75% 07 JUN 2049-31 REGS	1.73
2	NATIONAL BANK OF GREECE S 4.5% 29 JAN 2029-28 REGS	1.36

## GS Europe High Yield Bond Portfolio R Hedged GBP

Rank	Largest Holdings	%
3	BELLIS ACQUISITION COMP 8.125% 14 MAY 2030-26 REGS	1.20
4	ALPHA BANK S.A. 6.875% 27 JUN 2029-28 REGS	1.14
5	FORD MOTOR CREDIT COMPANY LLC 2.33% 25 NOV 2025	1.00
6	OLYMPUS WATER US HOLDIN 9.625% 15 NOV 2028-25 REGS	1.00
7	VODAFONE GROUP PUBLIC LIM 6.5% 30 AUG 2084-29 REGS	0.97
8	BELLIS ACQUISITION COMPA 3.25% 16 FEB 2026-25 REGS	0.94
9	CROWN EUROPEAN HOLDINGS 2.625% 30 SEP 2024 REGS	0.90
10	ADLER PELZER HOLDING GMBH 9.5% 01 APR 2027-25 REGS	0.90