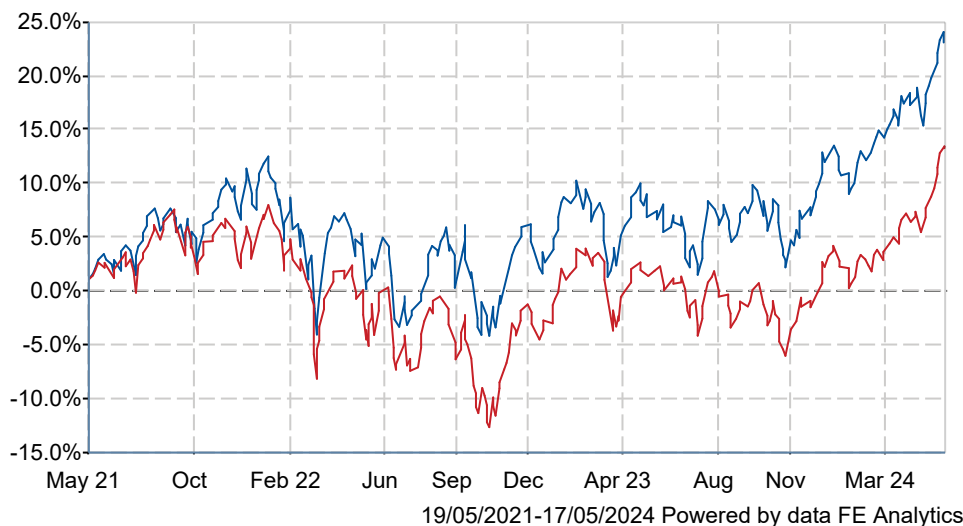




Fidelity UK Select W Acc

What is the Fund's objective?

The Fund aims to increase the value of your investment over a period of 5 years or more. The Fund will invest at least 70% in equities (and their related securities) of UK companies (those domiciled, incorporated or having significant business in the UK). The Fund may also invest a proportion of its assets in global companies listed in the UK. It aims to hold a concentrated portfolio of less than 50 securities. The Investment Manager will focus on companies which it believes have sustainable long-term earnings potential. The Investment Manager is not restricted in terms of size or industry. The Fund is actively managed without reference to a benchmark. The Fund may also invest in other transferable securities, collective investment schemes, money market instruments, cash and deposits and is also able to use derivatives for efficient portfolio management. The Fund's performance can be compared to the FTSE All Share (Gross Total Return) Index as the index constituents are representative of the type of companies the Fund invests in.

Cumulative Performance




	3m	6m	1yr	3yrs	5yrs
 Fidelity UK Select W Acc	+8.2	+15.3	+15.4	+22.5	+34.8
 IA UK All Companies	+9.6	+14.5	+11.5	+12.8	+27.1
Rank within sector	171 / 234	79 / 234	38 / 232	89 / 224	79 / 214
Quartile	3	2	1	2	2

Fund Information

Sector	IA UK All Companies
Asset Class	Equity
Launch Date	09-Nov-1987
Fund Size	£670.0m / \$851.1m (31-Mar-2024)
Fund Manager	Aruna Karunathilake Karan Singh

How does FE fundinfo rate this fund?

Alpha Manager Rating	Aruna Karunathilake
FE fundinfo Crown Rating	
AFI	NO
Risk Score	106

Investment Details

Initial Charge	0.00%
Annual Charges	0.75%
Note to charges	n/a
Minimum Initial Investment	£ 1,000
Minimum Additional Investment	£ 250
Dividend Policy	Mar 01 (Final)

Prices

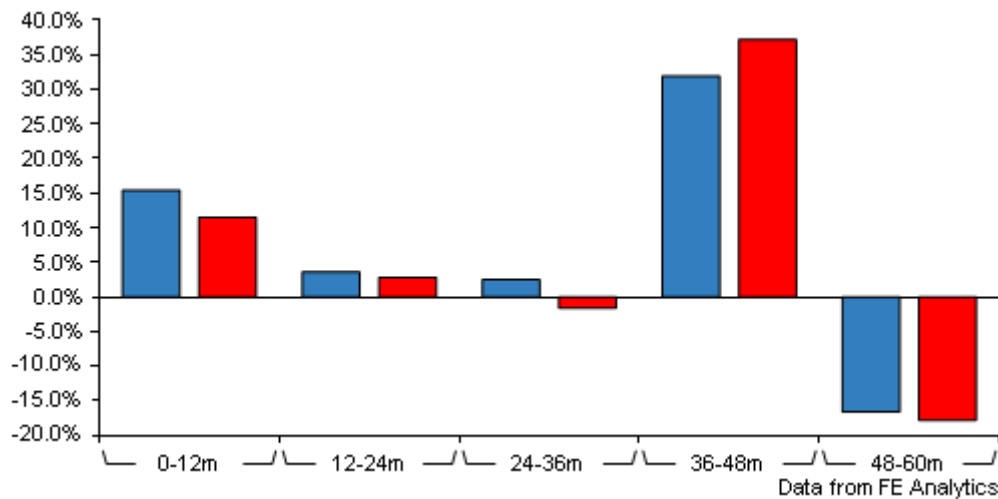
Unit Type	ACC
Mid	427.80[GBX]
Price Date	17 May 2024
Yield	0.00

Codes

Citicode	JTYC
SEDOL	BFRT394
ISIN	GB00BFRT3942

Fidelity UK Select W Acc

Discrete Performance



	0-12m	12m-24m	24m-36m	36m-48m	48m-60m
Fidelity UK Select W Acc	+15.4	+3.6	+2.5	+31.9	-16.6
IA UK All Companies	+11.5	+2.8	-1.6	+37.2	-17.8
Rank within sector	38 / 232	126 / 230	99 / 224	116 / 219	80 / 214
Quartile	1	3	2	3	2

All prices in Pence Sterling (GBX) unless otherwise specified. Price total return performance figures are calculated on a bid price to bid price basis (mid to mid for OEICs) with net income (dividends) reinvested. Performance figures are shown in Pound Sterling (GBP).

Contact Details

Address 4 Cannon St, London, EC4M 5AB

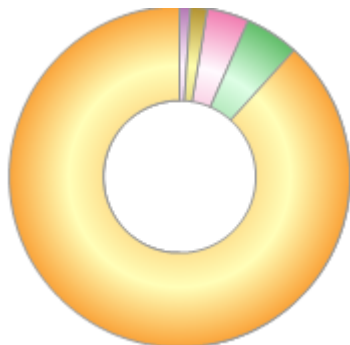
Telephone numbers 0333 300 3350 (Main Number)

Website www.fidelityinternational.com

Fidelity UK Select W Acc

Asset Allocation (31 Mar 2024)

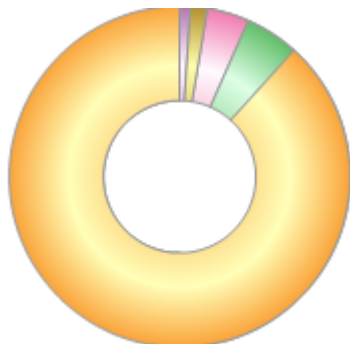
Rank	Asset Classes	%
1	UK Equities	88.29
2	US Equities	5.11
3	Danish Equities	3.96
4	Italian Equities	1.61
5	Money Market	1.03
6	Alternative Investment Strategies	0.00



Powered by data from FE fundinfo

Regional Breakdown (31 Mar 2024)

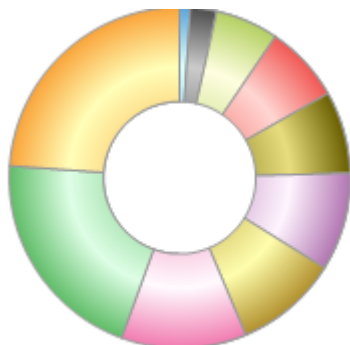
Rank	Regions	%
1	UNITED KINGDOM	88.29
2	UNITED STATES	5.11
3	DENMARK	3.96
4	ITALY	1.61
5	Uninvested Cash	1.03
6	Derivatives	0.00



Powered by data from FE fundinfo

Sector Breakdown (31 Mar 2024)

Rank	Sectors	%
1	Industrials	23.92
2	Consumer Discretionary	20.58
3	Technology	11.86
4	Consumer Staples	9.82
5	Financials	9.28
6	Health Care	7.76
7	Basic Materials	7.34
8	Energy	5.95
9	Real Estate	2.47
10	Others	1.02



Powered by data from FE fundinfo

Top Holdings (31 Mar 2024)

Rank	Largest Holdings	%
1	SAGE GROUP PLC	4.90
2	NATWEST GROUP PLC	4.74

Fidelity UK Select W Acc

Rank	Largest Holdings	%
3	LLOYDS BANKING GROUP PLC	4.54
4	RELX PLC	4.51
5	EXPERIAN PLC	4.29
6	NOVO-NORDISK AS	3.96
7	ASHTREAD GROUP PLC	3.61
8	HOWDEN JOINERY GROUP PLC	3.41
9	GLENCORE PLC	3.38
10	FERGUSON PLC	3.26