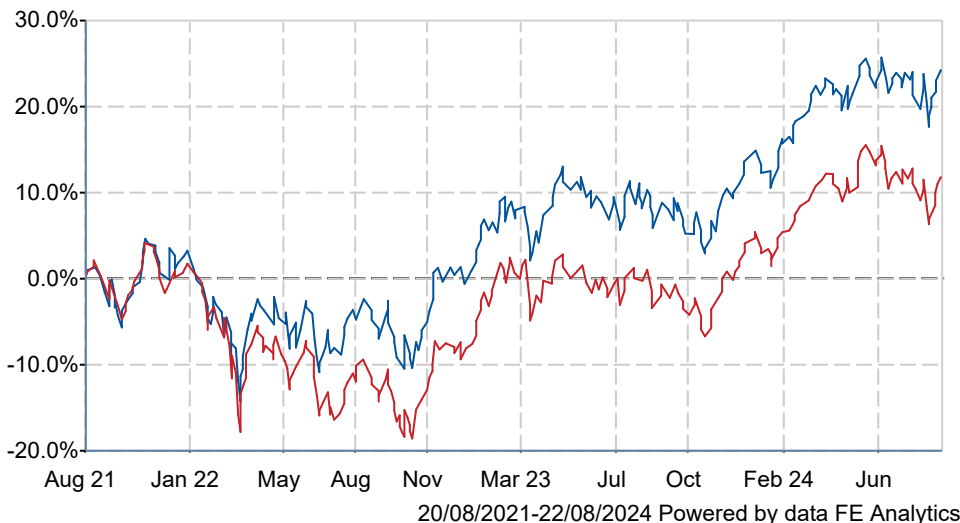


Fidelity European W Acc

What is the Fund's objective?

The Fund aims to increase the value of your investment over a period of 5 years or more and provide a growing level of income. The Fund will invest at least 80% in equities (and their related securities) of companies domiciled, incorporated or having significant business in continental Europe and those which are listed in the region. The Fund is actively managed. The Investment Manager identifies suitable opportunities for the Fund utilising in-house research and investment capabilities. The Investment Manager will, when selecting investments for the Fund and for the purposes of monitoring risk, consider the MSCI Europe ex UK Index. However, the Investment Manager has a wide degree of freedom relative to the index and may take larger, or smaller, positions in companies, and/or may invest outside the index, to take advantage of investment opportunities. This means the Fund's investments and therefore performance may vary significantly from the index. The Fund may also invest into other transferable securities, collective investment schemes, money market instruments, cash and deposits and is also able to use derivatives for efficient portfolio management. The Variable Share Class (W-VMF) measures its performance relative to the index for the purposes of the Investment Management Charge calculation. The performance index does not influence investment decisions materially. The Fund's performance can be compared to the MSCI Europe ex UK (Net Total Return) Index as the index constituents are representative of the type of companies the Fund invests in. Many funds sold in the UK are grouped into sectors by the Investment Association (the trade body that represents UK Investment Managers), to facilitate comparison between funds with broadly similar characteristics. This Fund is classified in the IA Europe excluding UK sector. Performance data on funds within this sector may be prepared and published by data providers and will be used when evaluating the performance of this Fund. The IA sector most closely reflects the combination of assets in the Fund.

Cumulative Performance



	3m	6m	1yr	3yrs	5yrs
■ Fidelity European W Acc	+0.5	+4.8	+15.6	+24.2	+60.6
■ IA Europe Excluding UK	-2.1	+3.1	+14.6	+11.7	+45.5
Rank within sector	4 / 139	32 / 139	61 / 139	16 / 135	17 / 127
Quartile	1	1	2	1	1

Sector	IA Europe Excluding UK
Asset Class	Equity
Launch Date	04-Nov-1985
Fund Size	£4,441.0m / \$5,811.0m (31-Jul-2024)
Fund Manager	Samuel Morse Marcel Stotzel

How does FE fundinfo rate this fund?

Alpha Manager Rating Samuel Morse

FE fundinfo Crown Rating 

Risk Score 106

Other ratings

Morningstar Analyst Rating



Investment Details

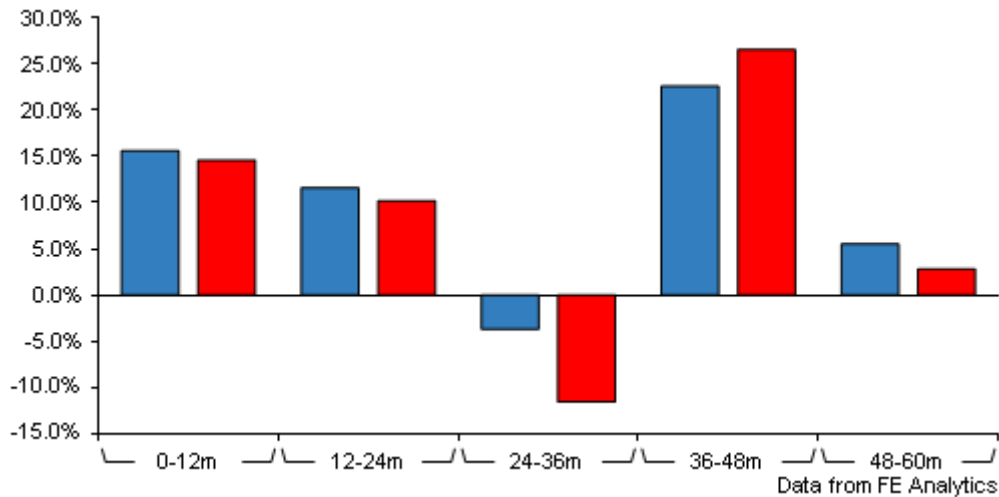
Initial Charge	0.00%
Annual Charges	0.75%
Note to charges	n/a
Minimum Initial Investment	£ 1,000
Minimum Additional Investment	£ 250
Dividend Policy	Mar 01, Sep 01 (Final)

Prices

Unit Type	ACC
Mid	2872.00(GBX)
Price Date	22 Aug 2024
Yield	1.25

Fidelity European W Acc

Discrete Performance



	0-12m	12m-24m	24m-36m	36m-48m	48m-60m
■ Fidelity European W Acc	+15.6	+11.6	-3.7	+22.6	+5.5
■ IA Europe Excluding UK	+14.6	+10.2	-11.6	+26.6	+2.8
Rank within sector	61 / 139	62 / 138	14 / 135	108 / 129	27 / 127
Quartile	2	2	1	4	1

All prices in Pence Sterling (GBX) unless otherwise specified. Price total return performance figures are calculated on a bid price to bid price basis (mid to mid for OEICs) with net income (dividends) reinvested. Performance figures are shown in Pound Sterling (GBP).

Codes

Citicode	JTXX
SEDOL	BFRT350
ISIN	GB00BFRT3504

Contact Details

Address	4 Cannon St, London, EC4M 5AB
Telephone numbers	0333 300 3350 (Main Number)
Website	www.fidelityinternational.com

Fidelity European W Acc

Asset Allocation (31 Jul 2024)

Rank	Asset Classes	%
1	French Equities	28.20
2	Swiss Equities	18.09
3	German Equities	11.21
4	Dutch Equities	8.99
5	Danish Equities	6.98
6	International Equities	5.03
7	Swedish Equities	4.77
8	Italian Equities	4.63
9	Finnish Equities	4.18
10	Others	7.92



Powered by data from FE fundinfo

Regional Breakdown (31 Jul 2024)

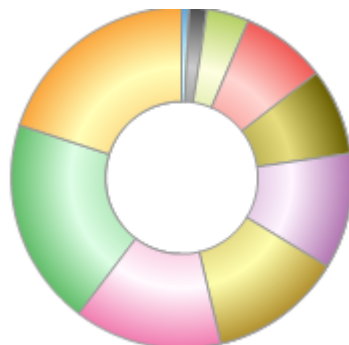
Rank	Regions	%
1	FRANCE	28.20
2	SWITZERLAND	18.09
3	GERMANY	11.21
4	NETHERLANDS	8.99
5	DENMARK	6.98
6	Others	5.03
7	SWEDEN	4.77
8	ITALY	4.63
9	FINLAND	4.18
10	Others	7.92



Powered by data from FE fundinfo

Sector Breakdown (31 Jul 2024)

Rank	Sectors	%
1	Financials	20.04
2	Health Care	19.66
3	Industrials	13.96
4	Information Technology	12.57
5	Consumer Discretionary	11.04
6	Materials	8.18
7	Consumer Staples	8.07
8	Energy	4.02
9	Utilities	1.72
10	Others	0.74



Powered by data from FE fundinfo

Top Holdings (31 Jul 2024)

Rank	Largest Holdings	%
1	NOVO-NORDISK AS	6.98
2	ASML HOLDING NV	6.34

Fidelity European W Acc

Rank	Largest Holdings	%
3	NESTLE SA	5.05
4	ROCHE HOLDING AG	4.74
5	SAP SE	4.66
6	LVMH MOET HENNESSY SE	4.03
7	TOTALENERGIES SE	4.02
8	L'OREAL SA	3.02
9	ESSILORLUXOTTICA	2.98
10	SANOFI	2.46