

# WS Gresham House UK Micro Cap C Acc

## What is the Fund's objective?

To achieve capital growth over any five year period, after all costs and charges have been taken. Capital invested is at risk and there is no guarantee the objective will be achieved over any time period. 70% of the fund is invested in the shares of UK companies.



## Cumulative Performance



	3m	6m	1yr	3yrs	5yrs
WS Gresham House UK Micro Cap C Acc	+0.6	+11.1	+15.7	-16.0	+26.6
IA UK Smaller Companies	+1.4	+13.1	+20.1	-17.4	+27.5
Rank within sector	34 / 48	36 / 48	40 / 48	18 / 47	20 / 46
Quartile	3	3	4	2	2

Sector	IA UK Smaller Companies
Asset Class	Equity
Launch Date	19-May-2009
Fund Size	£189.9m / \$250.5m (21-Aug-2024)
Fund Manager	Ken Wotton Brendan Gulston

## How does FE fundinfo rate this fund?

Alpha Manager Rating	Brendan Gulston
FE fundinfo Crown Rating	
Risk Score	

## Investment Details

Initial Charge	n/a
Annual Charges	0.90%
Note to charges	Initial Charges: max.;
Minimum Initial Investment	£ 10,000
Minimum Additional Investment	£ 1,000
Dividend Policy	Jan 01, Jul 01 (Final)

## Prices

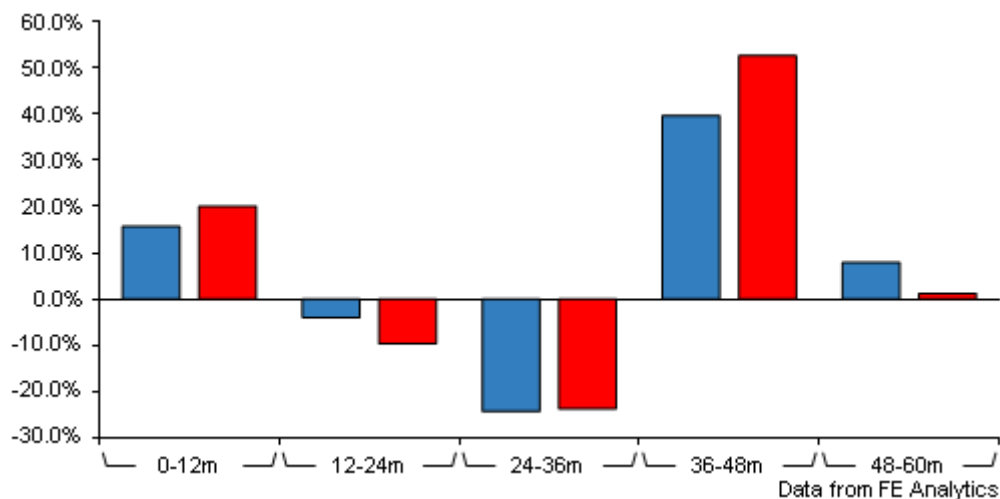
Unit Type	ACC
Mid	210.77(GBX)
Price Date	23 Aug 2024
Yield	0.51

## Codes

Citicode	M50I
SEDOL	BV9FYS8
ISIN	GB00BV9FYS80

# WS Gresham House UK Micro Cap C Acc

## Discrete Performance



	0-12m	12m-24m	24m-36m	36m-48m	48m-60m
WS Gresham House UK Micro Cap C Acc	+15.7	-4.0	-24.4	+39.7	+7.9
IA UK Smaller Companies	+20.1	-9.7	-23.8	+52.7	+1.2
Rank within sector	40 / 48	7 / 48	24 / 47	43 / 46	10 / 46
Quartile	4	1	2	4	1

All prices in Pence Sterling (GBX) unless otherwise specified. Price total return performance figures are calculated on a bid price to bid price basis (mid to mid for OEICs) with net income (dividends) reinvested. Performance figures are shown in Pound Sterling (GBP).

## Contact Details

**Address** 2nd Floor, 20 22 Bedford Row,  
London, United Kingdom, WC1R  
4EB

**Telephone numbers** 03459 220044 (Main Number)

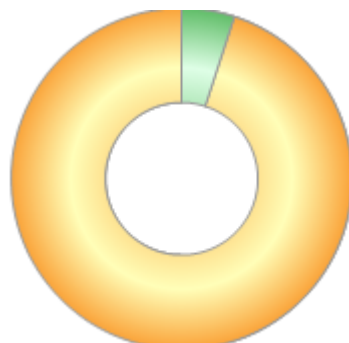
**Website** [www.waystone.com](http://www.waystone.com)

**Email** [investorservices@linkgroup.co.uk](mailto:investorservices@linkgroup.co.uk)

# WS Gresham House UK Micro Cap C Acc

## Asset Allocation (31 May 2024)

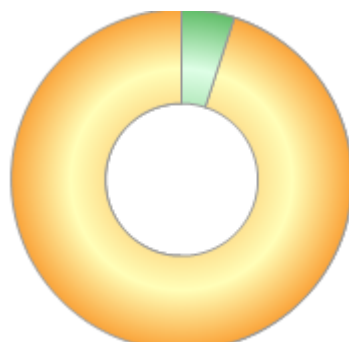
Rank	Asset Classes	%
1	UK Equities	95.00
2	Money Market	5.00



Powered by data from FE fundinfo

## Regional Breakdown (31 May 2024)

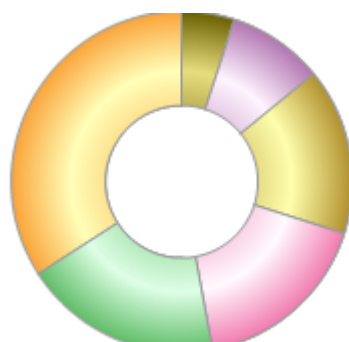
Rank	Regions	%
1	United Kingdom	95.00
2	Cash	5.00



Powered by data from FE fundinfo

## Sector Breakdown (31 May 2024)

Rank	Sectors	%
1	Business services	34.10
2	Financials	18.80
3	Consumer	17.20
4	TMT	15.80
5	Healthcare & education	9.10
6	Cash	5.00



Powered by data from FE fundinfo

## Top Holdings (31 May 2024)

Rank	Largest Holdings	%
1	Costain Group	5.10

# WS Gresham House UK Micro Cap C Acc

Rank	Largest Holdings	%
2	Fintel	4.50
3	TruFin	4.40
4	Franchise Brands	4.30
5	AdvancedAdvT	4.00
6	Elixirr	4.00
7	Netcall	3.90
8	Diaceutics	3.80
9	Iomart	3.60
10	Strategic Equity Capital plc	3.50