

# Jupiter European I Acc

## What is the Fund's objective?

The objective of the Fund is to achieve long-term capital growth. The investment policy is to invest in companies quoted on a European stock exchange.

## Cumulative Performance




	3m	6m	1yr	3yrs	5yrs
Jupiter European I Acc	-4.9	-2.9	+10.6	+0.7	+30.0
IA Europe Excluding UK	-2.7	+3.0	+14.2	+10.8	+46.4
Rank within sector	126 / 139	131 / 139	119 / 139	111 / 135	105 / 127
Quartile	4	4	4	4	4

## Fund Information

Sector	IA Europe Excluding UK
Asset Class	Equity
Launch Date	09-Jul-1987
Fund Size	£2,893.4m / \$3,817.6m (23-Aug-2024)
Fund Manager	Mark Heslop Mark Nichols

## How does FE fundinfo rate this fund?

Alpha Manager Rating	Mark Heslop
FE fundinfo Crown Rating	
Risk Score	134

## Other ratings

Morningstar Analyst Rating	
----------------------------	--

## Investment Details

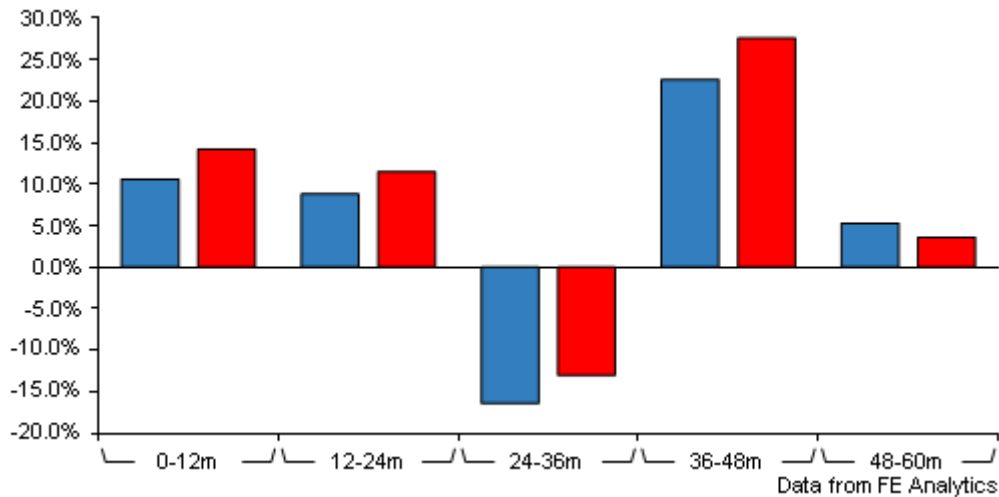
Initial Charge	0.00%
Annual Charges	n/a
Note to charges	n/a
Minimum Initial Investment	£ 1,000,000
Minimum Additional Investment	£ 50,000
Dividend Policy	Jul 01 (Final)

## Prices

Unit Type	ACC
Mid	3550.90(GBX)
Price Date	23 Aug 2024
Yield	0.66

# Jupiter European I Acc

## Discrete Performance



	0-12m	12m-24m	24m-36m	36m-48m	48m-60m
Jupiter European I Acc	+10.6	+8.8	-16.4	+22.6	+5.3
IA Europe Excluding UK	+14.2	+11.5	-13.0	+27.6	+3.6
Rank within sector	119 / 139	103 / 138	104 / 135	111 / 129	34 / 127
Quartile	4	3	4	4	2

All prices in Pence Sterling (GBX) unless otherwise specified. Price total return performance figures are calculated on a bid price to bid price basis (mid to mid for OEICs) with net income (dividends) reinvested. Performance figures are shown in Pound Sterling (GBP).

## Codes

Citicode	09QA
SEDOL	B5STJW8
ISIN	GB00B5STJW84

## Contact Details

**Address** The Zig Zag Building, 70 Victoria Street, London, United Kingdom, SW1E 6SQ

**Telephone numbers** +44 (0)20 3817 1000 (Dealing & Administration)  
+44 (0)20 3817 1063 (Main Number)

**Website** [www.jupiteram.com](http://www.jupiteram.com)

**Email** [clientservices@jupiteram.com](mailto:clientservices@jupiteram.com)

# Jupiter European I Acc

## Asset Allocation (30 Jun 2024)

Rank	Asset Classes	%
1	Dutch Equities	28.24
2	French Equities	22.41
3	Swiss Equities	10.33
4	Danish Equities	9.09
5	Swedish Equities	7.14
6	Italian Equities	5.19
7	German Equities	5.10
8	Global Equities	4.24
9	Spanish Equities	4.04
10	Others	4.22



Powered by data from FE fundinfo

## Regional Breakdown (30 Jun 2024)

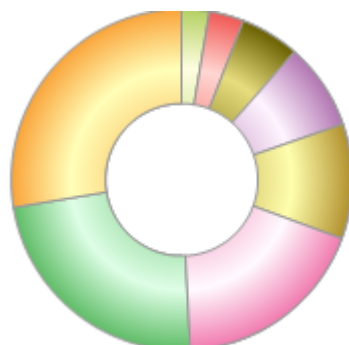
Rank	Regions	%
1	Netherlands	28.24
2	France	22.41
3	Switzerland	10.33
4	Denmark	9.09
5	Sweden	7.14
6	Italy	5.19
7	Germany	5.10
8	Other	4.24
9	Spain	4.04
10	Others	4.22



Powered by data from FE fundinfo

## Sector Breakdown (30 Jun 2024)

Rank	Sectors	%
1	Consumer Discretionary	27.60
2	Industrials	23.20
3	Technology	18.60
4	Health Care	10.90
5	Financials	8.20
6	Basic Materials	5.60
7	Consumer Staples	3.30
8	Cash	2.60



Powered by data from FE fundinfo

## Top Holdings (30 Jun 2024)

Rank	Largest Holdings	%
1	Novo Nordisk Class B	8.07
2	Relx Plc	7.42

# Jupiter European I Acc

Rank	Largest Holdings	%
3	Asml Holding Nv	6.92
4	Wolters Kluwer Nv	5.27
5	Amadeus It Group Sa	4.04
6	Schneider Electric	3.82
7	Lvmh	3.55
8	Sap	3.38
9	Edenred	3.25
10	Finecobank Banca Fineco	3.09