

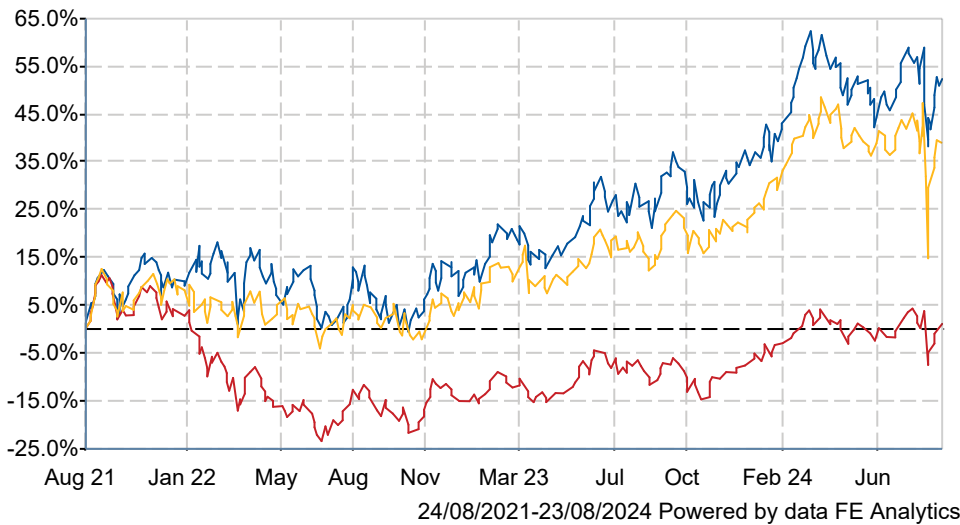
Japan Income & Growth Trust PLC Ord

GBP0.01

What is the Fund's objective?

To provide shareholders with dividend income combined with capital growth, mainly through investment in equities listed or quoted in Japan.

Cumulative Performance



	3m	6m	1yr	3yrs	5yrs
Japan Income & Growth Trust PLC Ord GBP0.01	+1.2	-0.1	+19.6	+53.9	+52.4
Japan	+2.0	+0.6	+12.4	+2.1	+31.8
NAV	+1.1	-0.7	+20.5	+40.3	+53.1
Rank within sector	3 / 5	4 / 5	1 / 5	1 / 5	2 / 5
Quartile	2	3	1	1	1

Fund Information

Sector	Japan
Asset Class	Equity
Launch Date	15-Dec-2015
Fund Size	£258.3m / \$340.9m (23-Aug-2024)
Fund Manager	Richard Aston

How does FE fundinfo rate this fund?

FE fundinfo Crown Rating 

Risk Score 

Investment Details

Initial Charge	n/a
Annual Charges	0.75%
Note to charges	n/a
Minimum Initial Investment	n/a
Minimum Additional Investment	n/a
Dividend Policy	n/a
Management Contract	n/a

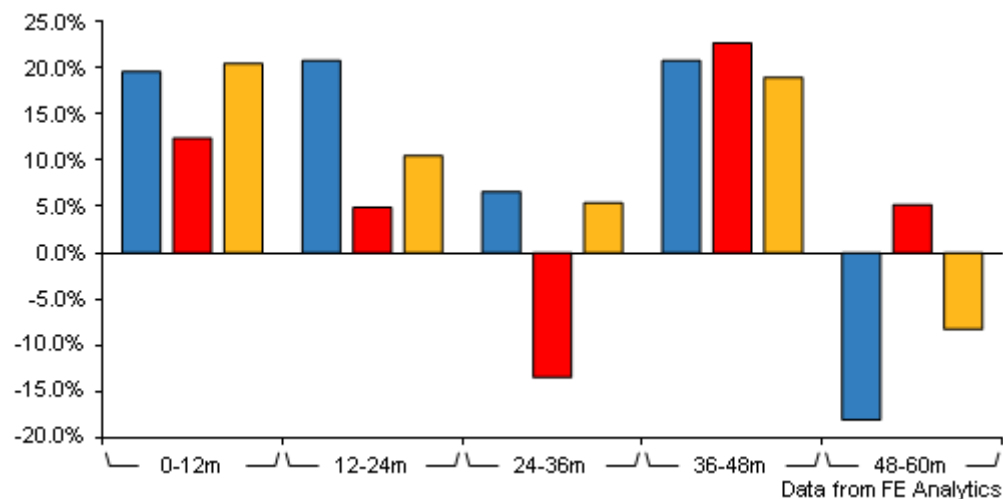
Prices

Unit Type	INC
Mid	191.75(GBX)
Price Date	23 Aug 2024
Yield	2.79
Discount	-5.25
Diluted NAV	
- Estimate	202.38
- Last Published	202.38 (22-Aug-2024)

Codes

Citicode	E2WS
SEDOL	BYSRMH1
ISIN	GB00BYSRMH16
TIDM	CCJI

Japan Income & Growth Trust PLC Ord GBP0.01



	0-12m	12m-24m	24m-36m	36m-48m	48m-60m
Japan Income & Growth Trust PLC Ord GBP0.01	+19.6	+20.8	+6.6	+20.8	-18.1
Japan	+12.4	+4.9	-13.5	+22.7	+5.2
NAV	+20.5	+10.5	+5.4	+19.0	-8.3
Rank within sector	1 / 5	1 / 5	1 / 5	4 / 5	5 / 5
Quartile	1	1	1	3	4

All prices in Pence Sterling (GBX) unless otherwise specified. Price total return performance figures are calculated using closing mid prices and with net income (dividends) reinvested. NAV total return performance figures are calculated using fully diluted (where applicable) daily estimated NAV figures from Thomson Financial Datastream. Performance figures are shown in Pound Sterling (GBP).

Contact Details

Address 31-32 St James's Street, London, SW1A 1HD

Telephone numbers +44(0) 20 7321 3470 (Main Number)

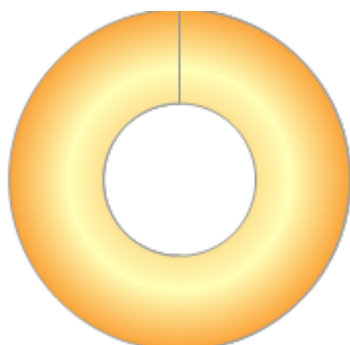
Website www.chikarainvestments.com

Email enquiries@chikarainvestments.com

Japan Income & Growth Trust PLC Ord GBP0.01

Asset Allocation (20 Jun 2024)

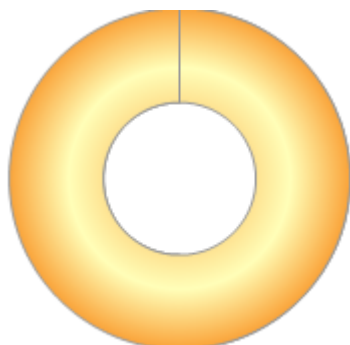
Rank	Asset Classes	%
1	Japan Equities	100.00



Powered by data from FE fundinfo

Regional Breakdown (28 Jun 2024)

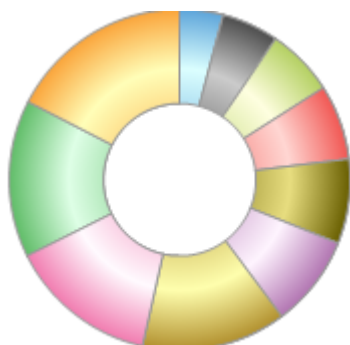
Rank	Regions	%
1	Japan	100.00



Powered by data from FE fundinfo

Sector Breakdown (31 Jan 2024)

Rank	Sectors	%
1	Chemicals	17.40
2	Electrical Appliances	14.90
3	Info & Communications	14.10
4	Banks	13.70
5	Wholesale	8.70
6	Insurance	8.00
7	Other Financial Business	7.10
8	Services	6.40
9	Retail Trade	5.40
10	Sec&Cmnty	4.10



Powered by data from FE fundinfo

Top Holdings (28 Jun 2024)

Rank	Largest Holdings	%
1	Sumitomo Mitsui Financial Group	8.50
2	Mitsubishi UFJ Financial Group	7.30

Japan Income & Growth Trust PLC Ord

GBP0.01

3	IIUCHU Corporation	5.50
4	Tokio Marine Holdings Inc	5.20
5	Sompo Holdings Inc	5.00
6	Hitachi Ltd	4.80
7	Shin-Etsu Chemical Co Ltd	4.80
8	SBI Holdings Inc	4.50
9	SoftBank Corp	4.30
10	Nintendo Co Ltd	3.60