



Royal London UK Government Bond M Acc

What is the Fund's objective?

The Fund's investment objective is to achieve a total return (combination of capital growth and income) over the medium term (3–5 years) by investing at least 80% in UK government bonds, also known as gilts. The Fund's performance target is to outperform, after the deduction of charges, the FTSE Actuaries UK Conventional Gilts (All Stocks) Total Return GBP Index (the "Index") over rolling 5-year periods. For further information on the Fund's index, please refer to the Prospectus. The Fund is actively managed.



Cumulative Performance



	3m	6m	1yr	3yrs	5yrs
 Royal London UK Government Bond M Acc	+3.3	+4.2	+9.2	-20.1	-17.3
 IA UK Gilts	+2.7	+3.4	+8.0	-23.0	-20.8
Rank within sector	10 / 33	4 / 33	4 / 33	8 / 30	7 / 28
Quartile	2	1	1	1	1

Sector	IA UK Gilts
Asset Class	Fixed Interest
Launch Date	08-Feb-1990
Fund Size	£1,027.8m / \$1,356.0m (31-Jul-2024)
Fund Manager	Craig Inches Ben Nicholl

How does FE fundinfo rate this fund?

Alpha Manager Rating	Craig Inches
FE fundinfo Crown Rating	
Risk Score	

Other ratings

Morningstar Analyst Rating	
----------------------------	--

Investment Details

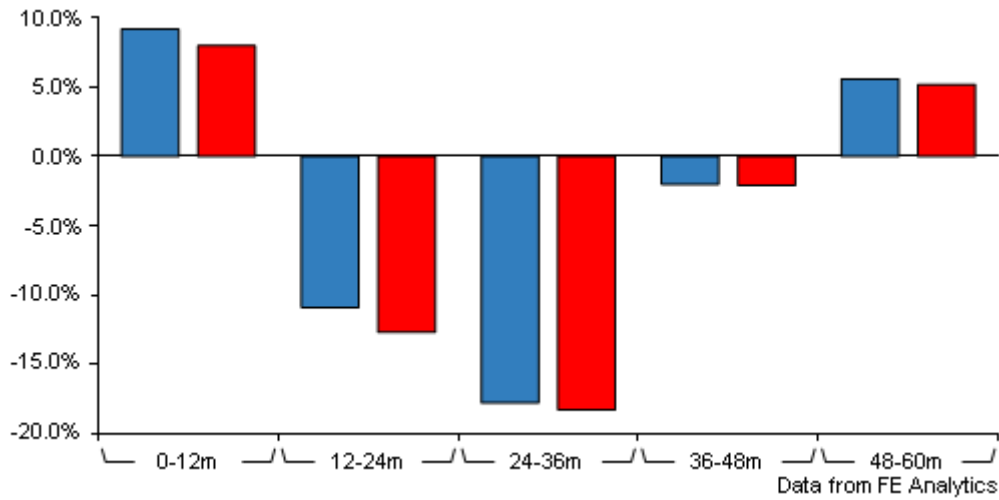
Initial Charge	n/a
Annual Charges	0.30%
Note to charges	n/a
Minimum Initial Investment	£ 100,000
Minimum Additional Investment	£ 1,000
Dividend Policy	May 01 (Final), Nov 01

Prices

Unit Type	ACC
Mid	106.20(GBX)
Price Date	23 Aug 2024
Yield	3.98

Royal London UK Government Bond M Acc

Discrete Performance



	0-12m	12m-24m	24m-36m	36m-48m	48m-60m
Royal London UK Government Bond M Acc	+9.2	-10.9	-17.8	-2.0	+5.6
IA UK Gilts	+8.0	-12.7	-18.3	-2.1	+5.2
Rank within sector	4 / 33	9 / 32	9 / 30	19 / 30	7 / 28
Quartile	1	2	2	3	1

All prices in Pence Sterling (GBX) unless otherwise specified. Price total return performance figures are calculated on a bid price to bid price basis (mid to mid for OEICs) with net income (dividends) reinvested. Performance figures are shown in Pound Sterling (GBP).

Codes

Citicode	GWUS
SEDOL	B881TW5
ISIN	GB00B881TW52

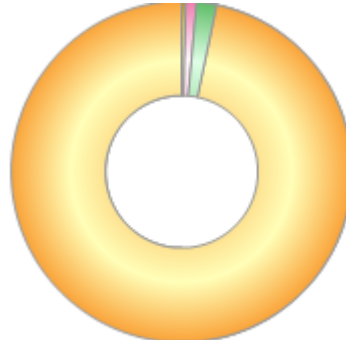
Contact Details

Address	80 Fenchurch Street, London EC3M 4BY, United Kingdom
Telephone numbers	020 7506 6500 (Main Number)
Website	www.rlam.com
Email	BDsupport@rlam.co.uk

Royal London UK Government Bond M Acc

Asset Allocation (31 Jul 2024)

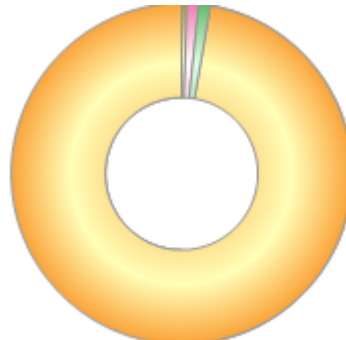
Rank	Asset Classes	%
1	Sterling conventional gilts	96.78
2	Foreign conventional sovereign	1.85
3	Conventional corporate bonds	0.99
4	Foreign index linked sovereign	0.38



Powered by data from FE fundinfo

Regional Breakdown (31 Jul 2024)

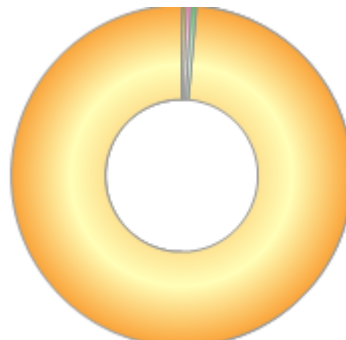
Rank	Regions	%
1	UNITED KINGDOM	97.26
2	UNITED STATES	1.14
3	AUSTRALIA	1.10
4	FRANCE	0.51



Powered by data from FE fundinfo

Sector Breakdown (31 Jul 2024)

Rank	Sectors	%
1	Foreign sovereigns	98.63
2	Banks and financial services	0.51
3	Supranationals & agencies	0.48
4	Index linked bonds	0.38



Powered by data from FE fundinfo

Top Holdings (31 Jul 2024)

Rank	Largest Holdings	%
1	UNITED KINGDOM OF GREAT BRITAIN AN 4.125% 29/01/2027	18.98
2	UNITED KINGDOM OF GREAT BRITAIN AN 3.75% 07/03/2027	11.60

Royal London UK Government Bond M Acc

Rank	Largest Holdings	%
3	UK CONV GILT 0.5 1/31/29 0.5% 31/01/2029	10.26
4	UNITED KINGDOM OF GREAT BRITAIN AN 4.125% 22/07/2029	7.59
5	UK CONV GILT 1.5% 31/07/2053	6.24
6	UK CONV GILT 0.875% 31/07/2033	5.43
7	UK CONV GILT 1.25% 22/10/2041	5.34
8	UK CONV GILT 1.75% 07/09/2037	4.16
9	UK CONV GILT 1.25% 31/07/2051	3.19
10	UNITED KINGDOM OF GREAT BRITAIN AN 3.5% 22/10/2025	3.11