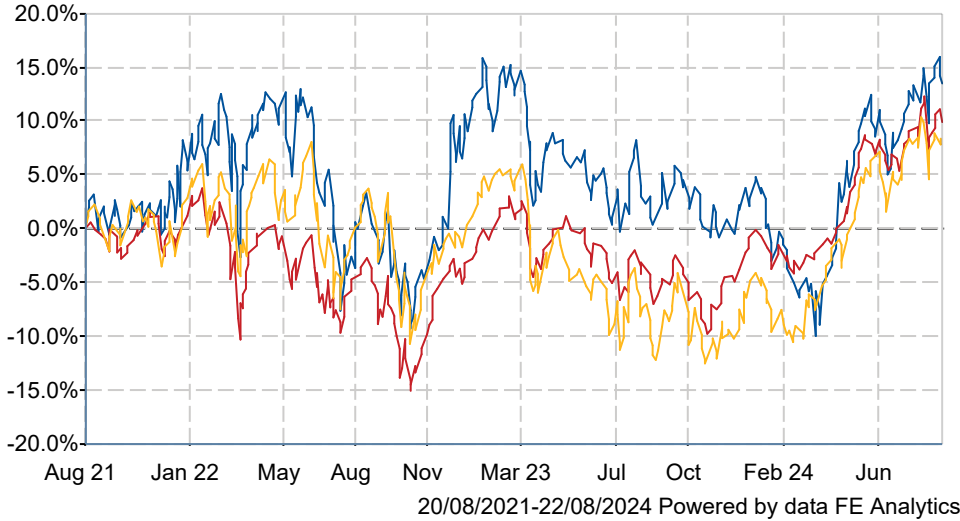


abrdn Equity Income Trust plc Ord 25P

What is the Fund's objective?

The Company's objective is to provide shareholders with an above average income from their equity investment while also providing real growth in capital and income.


Cumulative Performance



	3m	6m	1yr	3yrs	5yrs
abrdn Equity Income Trust plc Ord 25P	+2.1	+20.4	+14.2	+13.5	+23.0
UK Equity Income	+1.8	+13.8	+18.2	+9.9	+37.9
NAV	+3.3	+19.3	+22.7	+8.4	+19.1
Rank within sector	6 / 18	2 / 18	14 / 18	7 / 18	17 / 18
Quartile	2	1	4	2	4

Sector	UK Equity Income
Asset Class	Equity
Launch Date	25-Nov-2005
Fund Size	£153.9m / \$201.3m (22-Aug-2024)
Fund Manager	Thomas Moore

How does FE fundinfo rate this fund?

FE fundinfo Crown Rating	
Risk Score	159

Investment Details

Initial Charge	0.00%
Annual Charges	0.65%
Note to charges	Initial Charges: max.;
Minimum Initial Investment	n/a
Minimum Additional Investment	n/a
Dividend Policy	n/a

Management Contract

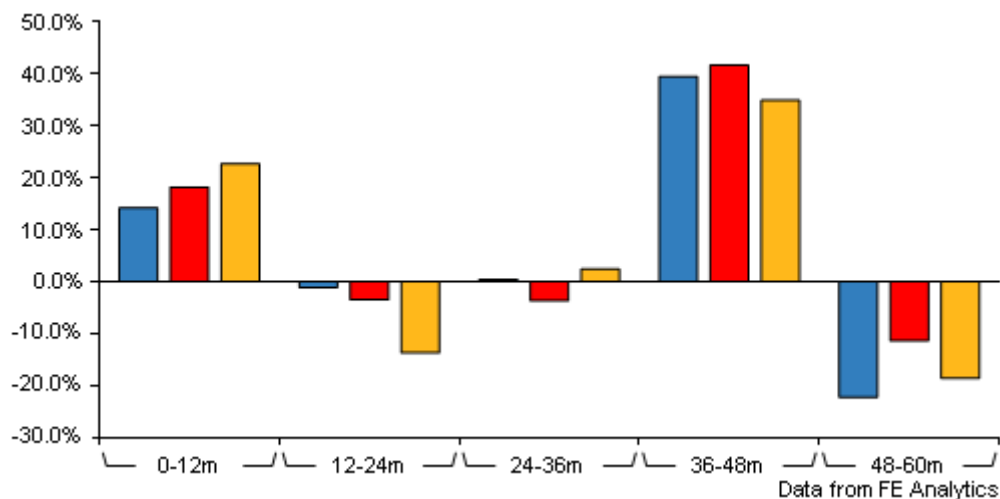
Company secretarial and administrative services are provided by Maven Capital Partners UK LLP under a separate agreement with the Manager. The investment management fee is calculated at 0.65% per annum of total assets at each quarter end date payable in arrears and is chargeable 30% to revenue. There is no performance fee. The notice period is six months.

Prices

Unit Type	INC
Mid	322.00(GBX)
Price Date	22 Aug 2024
Yield	7.08
Discount	-5.75
Diluted NAV	
- Estimate	341.66
- Last Published	341.66 (21-Aug-2024)

abrdn Equity Income Trust plc Ord 25P

Discrete Performance



	0-12m	12m-24m	24m-36m	36m-48m	48m-60m
abrdn Equity Income Trust plc Ord 25P	+14.2	-1.1	+0.4	+39.5	-22.3
UK Equity Income	+18.2	-3.5	-3.7	+41.7	-11.4
NAV	+22.7	-13.7	+2.4	+34.9	-18.6
Rank within sector	14 / 18	5 / 18	9 / 18	8 / 18	17 / 18
Quartile	4	1	2	2	4

All prices in Pence Sterling (GBX) unless otherwise specified. Price total return performance figures are calculated using closing mid prices and with net income (dividends) reinvested. NAV total return performance figures are calculated using fully diluted (where applicable) daily estimated NAV figures from Thomson Financial Datastream. Performance figures are shown in Pound Sterling (GBP).

Codes

Citicode	DH16
SEDOL	0603959
ISIN	GB0006039597
TIDM	AEI

Contact Details

Address abrdn Investment Trusts, PO Box 11020, Chelmsford, Essex, CM99 2DB

Telephone numbers 0330 1233 797 (Fax Number)
0808 500 0040 (Main Number)

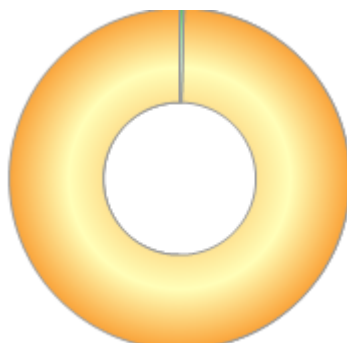
Website www.inptrusts.co.uk/

Email inv.trusts@abrdn.com

abrdrn Equity Income Trust plc Ord 25P

Asset Allocation (30 Jun 2024)

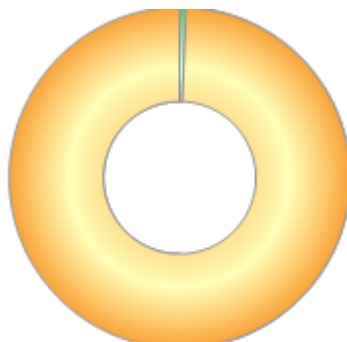
Rank	Asset Classes	%
1	UK Equities	99.60
2	Money Market	0.40



Powered by data from FE fundinfo

Regional Breakdown (30 Jun 2024)

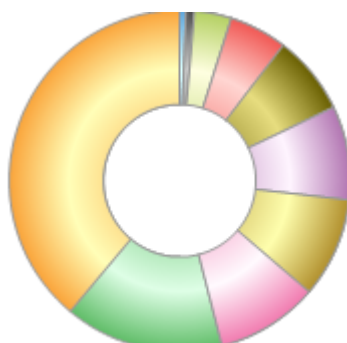
Rank	Regions	%
1	United Kingdom	99.40
2	Cash	0.60



Powered by data from FE fundinfo

Sector Breakdown (30 Jun 2024)

Rank	Sectors	%
1	Financials	38.90
2	Energy	15.10
3	Industrials	9.70
4	Basic Materials	9.50
5	Utilities	8.90
6	Consumer Staples	7.50
7	Real Estate	5.50
8	Consumer Discretionary	3.50
9	Health Care	0.80
10	Cash	0.60



Powered by data from FE fundinfo

Top Holdings (30 Jun 2024)

Rank	Largest Holdings	%
1	Imperial Brands	4.40
2	CMC	4.40

abrdrn Equity Income Trust plc Ord 25P

Rank	Largest Holdings	%
3	National Grid	4.20
4	Shell	4.00
5	BP	3.80
6	Smith (DS)	3.70
7	SSE	3.60
8	Hargreaves Lansdown	3.20
9	British American Tobacco	3.00
10	Conduit	2.60