

HSBC European Index C Acc

What is the Fund's objective?

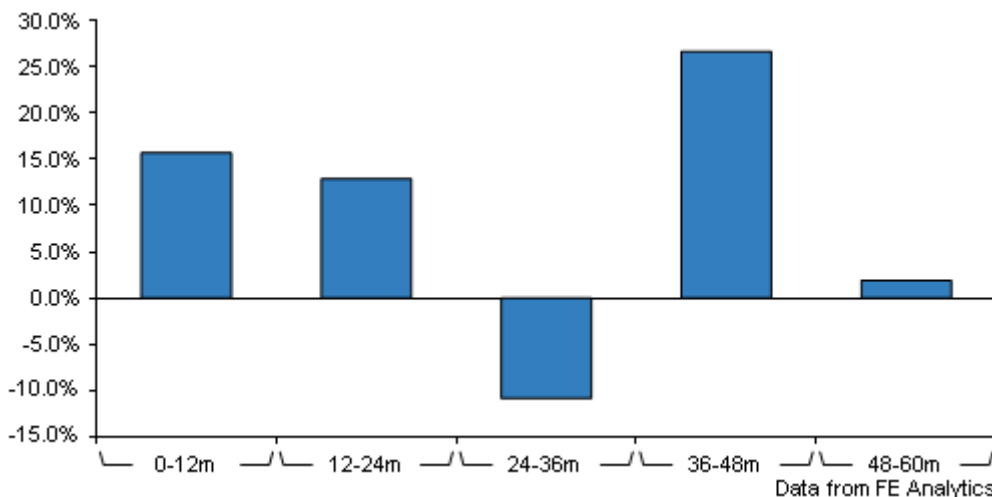
The Fund aims to provide growth over the long term, which is a period of 5 years or more, by tracking the performance of the FTSE Developed Europe excluding UK Index (the "Index").

Cumulative Performance



	3m	6m	1yr	3yrs	5yrs
HSBC European Index C Acc	-1.5	+4.4	+15.7	+16.4	+50.3

Discrete Performance



	0-12m	12m-24m	24m-36m	36m-48m	48m-60m
HSBC European Index C Acc	+15.7	+12.9	-10.9	+26.7	+1.9

All prices in Pence Sterling (GBX) unless otherwise specified. Price total return performance figures are calculated on a bid price to bid price basis (mid to mid for OEICs) with net income (dividends) reinvested. Performance figures are shown in Pound Sterling (GBP).

Fund Information

Benchmark	n/a
Asset Class	Equity
Launch Date	14-Jan-1989
Fund Size	£4,431.9m / \$5,847.5m (23-Aug-2024)

How does FE fundinfo rate this fund?

FE fundinfo Passive Rating	 P
Risk Score	116

Investment Details

Initial Charge	0.00%
Annual Charges	0.03%
Note to charges	Initial Charges: max.;
Minimum Initial Investment	£ 1,000,000
Minimum Additional Investment	£ 1,000
Dividend Policy	May 16 (Final)

Prices

Unit Type	ACC
Mid	1401.00(GBX)
Price Date	23 Aug 2024
Yield	2.49

Codes

Citicode	G19E
SEDOL	B80QGH2
ISIN	GB00B80QGH28

Contact Details

Address 8 Canada Square, Canary Wharf, London, E14 5HQ

Telephone numbers 080 0358 3011 (Main Number)

Website www.assetmanagement.hsbc.co.uk

HSBC European Index C Acc

Asset Allocation (30 Jun 2024)

Rank	Asset Classes	%
1	French Equities	21.65
2	Swiss Equities	18.53
3	German Equities	16.68
4	Dutch Equities	10.50
5	Danish Equities	7.33
6	Swedish Equities	6.61
7	Italian Equities	5.64
8	Spanish Equities	5.44
9	International Equities	3.34
10	Others	4.28



Powered by data from FE fundinfo

Regional Breakdown (30 Jun 2024)

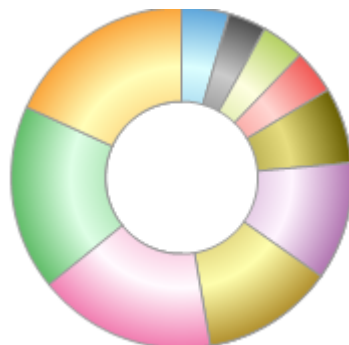
Rank	Regions	%
1	France	21.65
2	Switzerland	18.53
3	Germany	16.68
4	Netherlands	10.50
5	Denmark	7.33
6	Sweden	6.61
7	Italy	5.64
8	Spain	5.44
9	International	3.34
10	Others	4.28



Powered by data from FE fundinfo

Sector Breakdown (30 Jun 2024)

Rank	Sectors	%
1	Industrials	18.17
2	Financials	17.64
3	Health Care	16.87
4	Consumer Discretionary	12.53
5	Technology	11.19
6	Consumer Staples	7.18
7	Basic Materials	4.20
8	Energy	4.14
9	Utilities	3.62
10	Others	4.46



Powered by data from FE fundinfo

Top Holdings (30 Jun 2024)

Rank	Largest Holdings	%
1	Novo Nordisk A/S	5.16
2	ASML Holding NV	4.75

HSBC European Index C Acc

Rank	Largest Holdings	%
3	Nestle SA	3.12
4	SAP SE	2.60
5	Novartis AG	2.55
6	Roche Holding AG	2.38
7	LVMH Moet Hennessy Louis Vuitton	2.20
8	Siemens AG	1.61
9	TotalEnergies SE	1.57
10	Schneider Electric SE	1.50