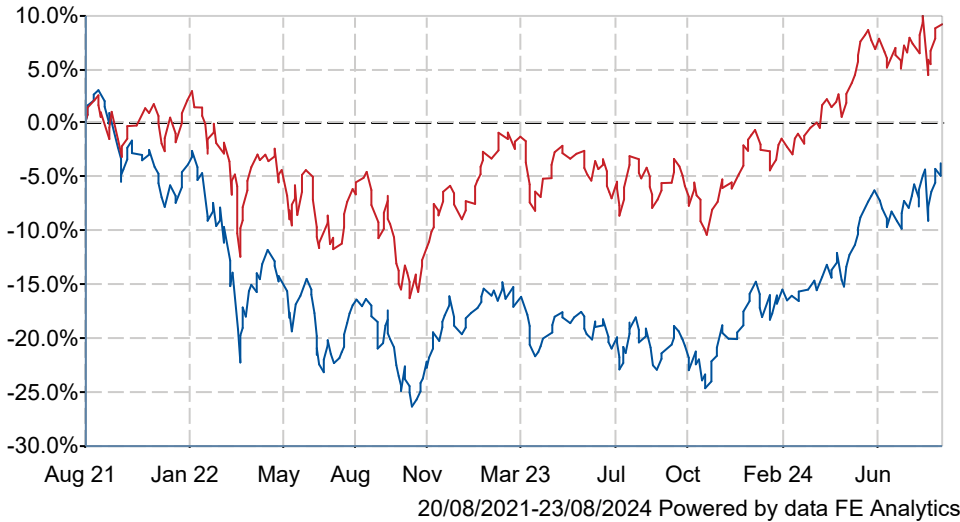


# Premier Miton UK Growth C Inc GBP

## What is the Fund's objective?

The objective of the Fund is to provide capital growth over the long-term, being five years or more. Five years is also the minimum recommended period for holding shares in this Fund. This does not mean that the Fund will achieve the objective over this, or any other, specific time period and there is a risk of loss to the original capital invested.


## Cumulative Performance



	3m	6m	1yr	3yrs	5yrs
<span style="color: blue;">■</span> Premier Miton UK Growth C Inc GBP	+4.1	+14.1	+24.5	-3.7	+56.2
<span style="color: red;">■</span> IA UK All Companies	+0.9	+10.2	+18.1	+8.2	+30.7
Rank within sector	5 / 231	23 / 231	21 / 229	167 / 223	9 / 211
Quartile	1	1	1	3	1

Sector	IA UK All Companies
Asset Class	Equity
Launch Date	21-Jun-1972
Fund Size	£180.2m / \$235.8m (23-Aug-2024)
Fund Manager	Benji Dawes Jon Hudson

## How does FE fundinfo rate this fund?

FE fundinfo Crown Rating	
Risk Score	<b>114</b>

## Investment Details

Initial Charge	n/a
Annual Charges	0.75%
Note to charges	n/a
Minimum Initial Investment	£ 250,000
Minimum Additional Investment	£ 25,000
Dividend Policy	Mar 01, Sep 01 (Final)

## Prices

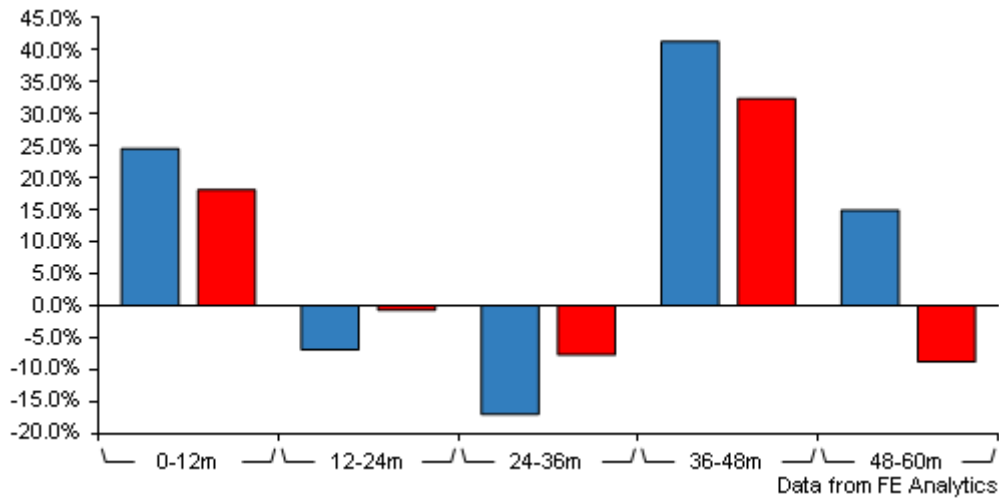
Unit Type	INC
Mid	311.70(GBX)
Price Date	23 Aug 2024
Yield	2.43

## Codes

Citicode	BY93
SEDOL	3163922
ISIN	GB0031639221

# Premier Miton UK Growth C Inc GBP

## Discrete Performance



	0-12m	12m-24m	24m-36m	36m-48m	48m-60m
<span style="color: blue;">■</span> Premier Miton UK Growth C Inc GBP	+24.5	-6.9	-17.0	+41.3	+14.9
<span style="color: red;">■</span> IA UK All Companies	+18.1	-0.7	-7.7	+32.4	-8.8
Rank within sector	21 / 229	197 / 228	186 / 223	40 / 218	2 / 211
Quartile	1	4	4	1	1

All prices in Pence Sterling (GBX) unless otherwise specified. Price total return performance figures are calculated on a bid price to bid price basis (mid to mid for OEICs) with net income (dividends) reinvested. Performance figures are shown in Pound Sterling (GBP).

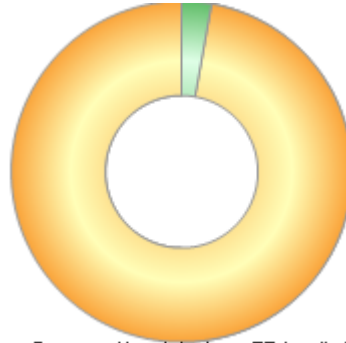
## Contact Details

Address	Premier Fund Managers Ltd, Eastgate Court, High Street, Guildford, Surrey, GU1 3DE
Telephone numbers	01483 306090 (Main Number)
Website	<a href="http://www.premiermiton.com">www.premiermiton.com</a>
Email	<a href="mailto:info@premiermiton.com">info@premiermiton.com</a>

# Premier Miton UK Growth C Inc GBP

## Asset Allocation (31 Jul 2024)

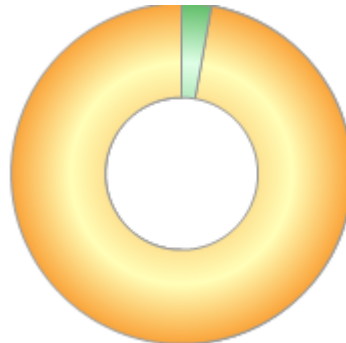
Rank	Asset Classes	%
1	UK Equities	97.20
2	Cash & equivalent	2.80



Powered by data from FE fundinfo

## Regional Breakdown (31 Jul 2024)

Rank	Regions	%
1	UK	97.20
2	Cash & equivalent	2.80



Powered by data from FE fundinfo

## Sector Breakdown (31 Jul 2024)

Rank	Sectors	%
1	Financials	24.30
2	Consumer Discretionary	17.70
3	Industrials	11.00
4	Consumer Staples	9.70
5	Materials	8.20
6	Information Technology	7.50
7	Communication Services	6.60
8	Energy	5.10
9	Health Care	4.40
10	Others	5.50



Powered by data from FE fundinfo

## Top Holdings (31 Jul 2024)

Rank	Largest Holdings	%
1	Alpha Group International	4.41
2	IG Group Holdings	3.30

# Premier Miton UK Growth C Inc GBP

Rank	Largest Holdings	%
3	Jet2	3.08
4	Shell	2.87
5	Hikma Pharmaceuticals	2.55
6	Hill & Smith	2.47
7	Inchcape	2.45
8	Games Workshop Group	2.36
9	AJ Bell	2.36
10	Qinetiq Group	2.27