



# Rathbone Ethical Bond Fund I Acc GBP

## What is the Fund's objective?

We aim to deliver a greater total return than the Investment Association (IA) Sterling Corporate Bond sector, after fees, over any rolling five-year period. Total return means the return we receive from the value of our investments increasing (capital growth) plus the income we receive from our investments (interest payments). We use the IA Sterling Corporate Bond sector as a target for our fund's return because we aim to achieve a better return than the average of funds that are similar to ours.


## Cumulative Performance



	3m	6m	1yr	3yrs	5yrs
 Rathbone Ethical Bond Fund I Acc GBP	+2.8	+4.9	+13.9	-6.4	+6.1
 IA Sterling Corporate Bond	+2.7	+3.9	+11.7	-7.6	+0.4
Rank within sector	33 / 97	9 / 97	24 / 97	35 / 92	19 / 88
Quartile	2	1	1	2	1

Sector	IA Sterling Corporate Bond
Asset Class	Fixed Interest
Launch Date	14-May-2002
Fund Size	£2,012.2m / \$2,633.0m (23-Aug-2024)
Fund Manager	Bryn Jones Stuart Chilvers Christie Goncalves

## How does FE fundinfo rate this fund?

FE fundinfo Crown Rating	
Risk Score	<b>56</b>

## Investment Details

Initial Charge	0.00%
Annual Charges	0.63%
Note to charges	Initial Charges: max.;
Minimum Initial Investment	£ 1,000
Minimum Additional Investment	£ 500
Dividend Policy	Jan 01, Apr 01, Jul 01 (Final), Oct 01

## Prices

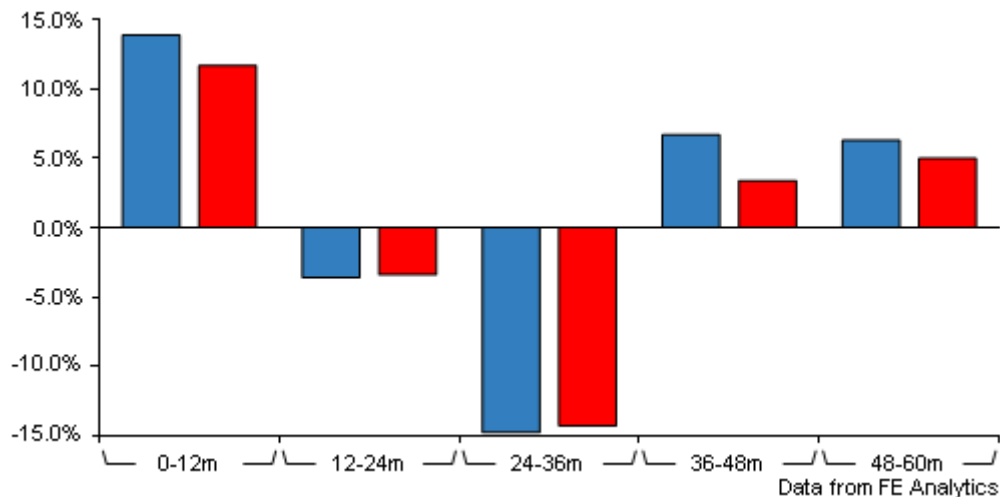
Unit Type	ACC
Mid	233.46(GBX)
Price Date	23 Aug 2024
Yield	4.90

## Codes

Citicode	0WF6
SEDOL	B77DQT1
ISIN	GB00B77DQT14

# Rathbone Ethical Bond Fund I Acc GBP

## Discrete Performance



	0-12m	12m-24m	24m-36m	36m-48m	48m-60m
<span style="color: blue;">■</span> Rathbone Ethical Bond Fund I Acc GBP	+13.9	-3.6	-14.8	+6.7	+6.3
<span style="color: red;">■</span> IA Sterling Corporate Bond	+11.7	-3.4	-14.3	+3.4	+5.0
Rank within sector	24 / 97	30 / 95	49 / 92	4 / 92	10 / 88
Quartile	1	2	3	1	1

All prices in Pence Sterling (GBX) unless otherwise specified. Price total return performance figures are calculated on a bid price to bid price basis (mid to mid for OEICs) with net income (dividends) reinvested. Performance figures are shown in Pound Sterling (GBP).

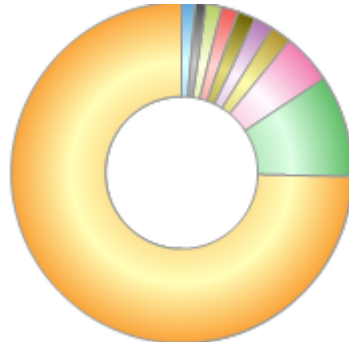
## Contact Details

Address	30 Gresham Street, London, EC2V 7QN
Telephone numbers	020 7399 0399 (Main Number)
Website	<a href="http://www.rathbonesam.com/">www.rathbonesam.com/</a>
Email	<a href="mailto:ram@rathbones.com">ram@rathbones.com</a>

# Rathbone Ethical Bond Fund I Acc GBP

## Asset Allocation (31 May 2024)

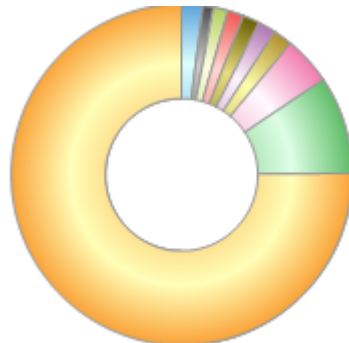
Rank	Asset Classes	%
1	UK Corporate Fixed Interest	74.68
2	French Corporate Fixed Interest	9.67
3	Spanish Corporate Fixed Interest	4.78
4	Money Market	1.97
5	Swiss Corporate Fixed Interest	1.80
6	Italian Corporate Fixed Interest	1.73
7	Dutch Corporate Fixed Interest	1.58
8	US Corporate Fixed Interest	1.48
9	American Emerging Corporate Fixed Interest	1.00
10	Others	1.31



Powered by data from FE fundinfo

## Regional Breakdown (31 Jul 2024)

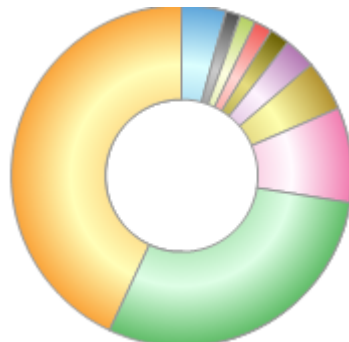
Rank	Regions	%
1	UK	75.19
2	France	9.25
3	Spain	4.57
4	Switzerland	1.81
5	Italy	1.71
6	Netherlands	1.58
7	USA	1.51
8	Money Market	1.42
9	Bermuda	1.00
10	Others	1.96



Powered by data from FE fundinfo

## Sector Breakdown (31 Jul 2024)

Rank	Sectors	%
1	Insurance	43.03
2	Banks	29.43
3	Government	8.95
4	Social housing	4.76
5	Renewable energy	3.04
6	Real estate	1.92
7	Consumer services	1.68
8	Financial services	1.53
9	Cash & Cash Equivalents	1.42
10	Others	4.24



Powered by data from FE fundinfo

## Top Holdings (31 Jul 2024)

Rank	Largest Holdings	%
1	UK Treasury 1.5% 31/07/2053	8.25
2	HSBC 5.844% Perp	2.70

# Rathbone Ethical Bond Fund I Acc GBP

Rank	Largest Holdings	%
3	AXA 6.379% Perp	1.97
4	Phoenix 7.75% 06/12/2053	1.85
5	Santander 2.25% 04/10/2032	1.77
6	Royal London 4.875% 07/10/2049	1.68
7	Legal & General 3.75% 26/11/2049	1.59
8	Generali 6.269% Perp	1.43
9	Société Générale 5.75% 22/01/2032	1.43
10	Royal London 6.125% 13/11/2028	1.39