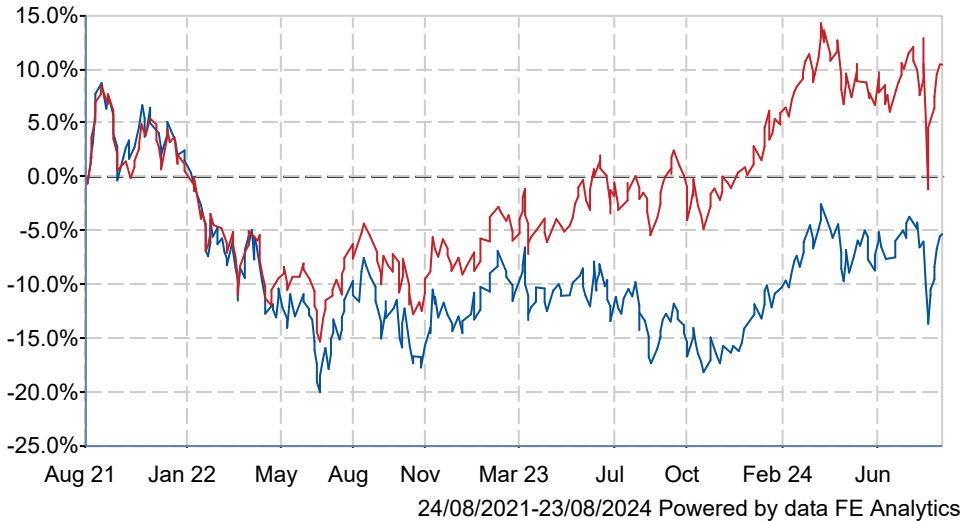




Baillie Gifford Japanese B Acc

What is the Fund's objective?

The fund aims to outperform (after deduction of costs) the TOPIX, as stated in sterling, by at least 1.5% per annum over rolling five-year periods.


Cumulative Performance



	3m	6m	1yr	3yrs	5yrs
 Baillie Gifford Japanese B Acc	+2.1	+3.3	+12.2	-4.4	+15.3
 IA Japan	+2.5	+1.7	+14.2	+11.5	+34.9
Rank within sector	48 / 103	21 / 102	77 / 102	82 / 97	79 / 92
Quartile	2	1	4	4	4

Sector	IA Japan
Asset Class	Equity
Launch Date	08-Oct-1984
Fund Size	£1,446.1m / \$1,907.9m (23-Aug-2024)
Fund Manager	Matthew Brett

How does FE fundinfo rate this fund?

FE fundinfo Crown Rating	
Risk Score	137

Investment Details

Initial Charge	0.00%
Annual Charges	0.60%
Note to charges	n/a
Minimum Initial Investment	£ 100,000
Minimum Additional Investment	n/a
Dividend Policy	Apr 30 (Final)

Prices

Unit Type	ACC
Mid	1934.00(GBX)
Price Date	23 Aug 2024
Yield	1.00

Codes

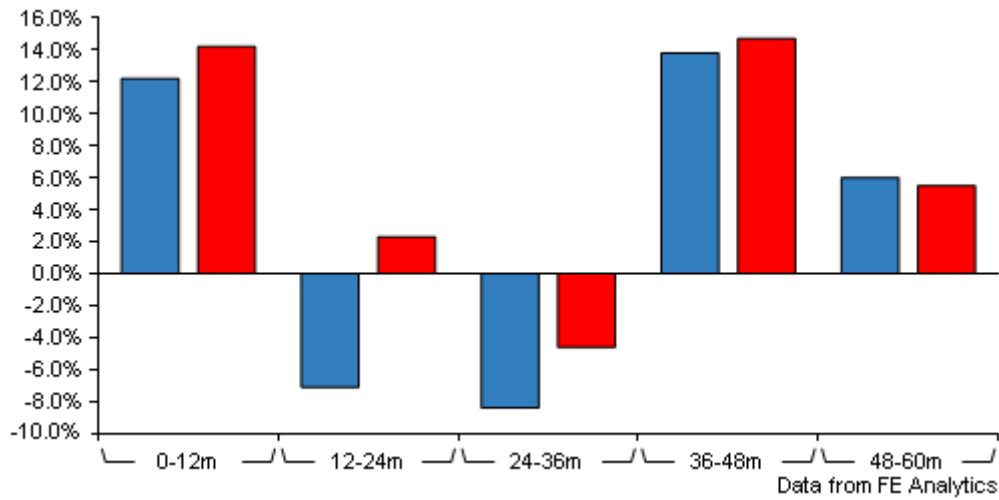
Citicode	BG47
SEDOL	0601113
ISIN	GB0006011133

Contact Details

Address	Calton Square, 1 Greenside Row, Edinburgh, EH1 3AN
Telephone numbers	+44 (0) 131 275 2000 (Main Number)
Website	www.bailliegifford.com
Email	enquiries@bailliegifford.com

Baillie Gifford Japanese B Acc

Discrete Performance



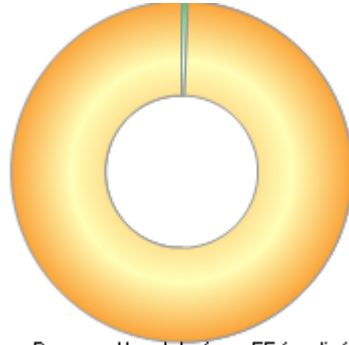
	0-12m	12m-24m	24m-36m	36m-48m	48m-60m
■ Baillie Gifford Japanese B Acc	+12.2	-7.1	-8.4	+13.8	+6.0
■ IA Japan	+14.2	+2.3	-4.6	+14.7	+5.5
Rank within sector	77 / 102	90 / 101	76 / 97	40 / 94	30 / 92
Quartile	4	4	4	2	2

All prices in Pence Sterling (GBX) unless otherwise specified. Price total return performance figures are calculated on a bid price to bid price basis (mid to mid for OEICs) with net income (dividends) reinvested. Performance figures are shown in Pound Sterling (GBP).

Baillie Gifford Japanese B Acc

Asset Allocation (30 Jun 2024)

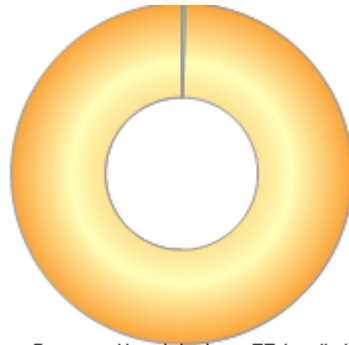
Rank	Asset Classes	%
1	Japan Equities	99.40
2	Cash	0.60



Powered by data from FE fundinfo

Regional Breakdown (31 Jul 2024)

Rank	Regions	%
1	Japan	99.74
2	Cash & Cash Equivalents	0.26



Powered by data from FE fundinfo

Sector Breakdown (31 Jul 2024)

Rank	Sectors	%
1	Machinery	10.06
2	Health & Household	7.65
3	Electronic & Electrical Equipment	7.33
4	Wireless & Mobile Communications	7.23
5	Financials	6.91
6	Leisure	5.73
7	Banks	5.69
8	Retailers - General	5.60
9	Services	4.54
10	Others	39.26



Powered by data from FE fundinfo

Top Holdings (31 Jul 2024)

Rank	Largest Holdings	%
1	SoftBank Group	7.23
2	Sumitomo Mitsui Trust	5.27

Baillie Gifford Japanese B Acc

Rank	Largest Holdings	%
3	Rakuten	5.00
4	SBI Holdings	4.05
5	Nintendo	3.38
6	Recruit Holdings	3.30
7	GMO Internet	3.12
8	Sony	2.84
9	MS&AD Insurance	2.82
10	CyberAgent	2.81