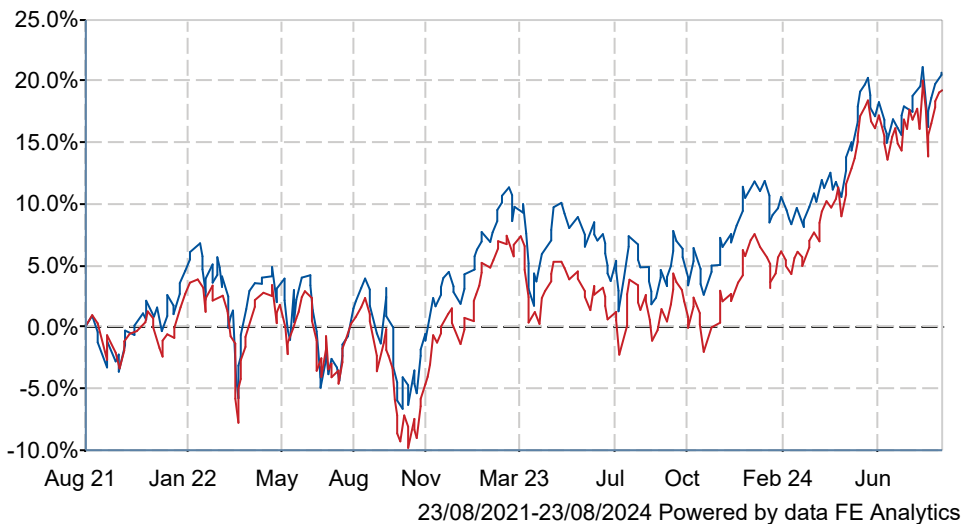




# Rathbone Income Fund I Acc GBP

## What is the Fund's objective?

We aim to deliver an annual income that is in line with or better than that of the FTSE All-Share Index over any rolling three-year period. We also aim to increase the income we pay you in line with the Consumer Price Index (CPI) measure of inflation over any rolling five-year period. We aim to generate a greater total return than the FTSE All-Share Index, after fees, over any five-year period. Total return means the return we receive from the value of our investments increasing (capital growth) plus the income we receive from our investments (dividend payments). We use the FTSE All-Share Index as a target for our fund's return and the income we pay because we want to offer you a better income and higher returns than the UK stock market. Increasing your income payments at least in line with the CPI measure of inflation protects your future spending power. We also compare our fund against the Investment Association (IA) UK Equity Income sector because the funds in it are similar to ours.


## Cumulative Performance



	3m	6m	1yr	3yrs	5yrs
 Rathbone Income Fund I Acc GBP	+1.5	+9.9	+17.9	+20.7	+32.4
 IA UK Equity Income	+1.6	+12.7	+20.1	+19.2	+37.1
Rank within sector	32 / 75	64 / 75	65 / 75	37 / 74	49 / 72
Quartile	2	4	4	2	3

Sector	IA UK Equity Income
Asset Class	Equity
Launch Date	01-Feb-1971
Fund Size	£677.9m / \$894.4m (23-Aug-2024)
Fund Manager	Carl Stick Alan Dobbie

## How does FE fundinfo rate this fund?

FE fundinfo Crown Rating	
Risk Score	103

## Other ratings

Morningstar Analyst Rating	
----------------------------	---

## Investment Details

Initial Charge	0.00%
Annual Charges	0.75%
Note to charges	n/a
Minimum Initial Investment	£ 1,000
Minimum Additional Investment	£ 500
Dividend Policy	Apr 01, Oct 01 (Final)

## Prices

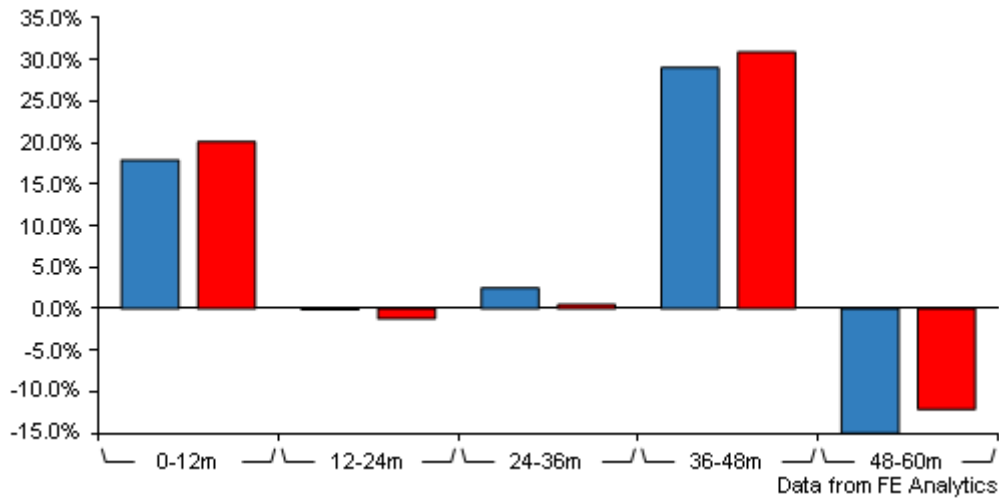
Unit Type	ACC
Mid	2180.22(GBX)
Price Date	23 Aug 2024
Yield	4.13

## Codes

Citicode	0WFG
SEDOL	B3Q9WG1
ISIN	GB00B3Q9WG18

# Rathbone Income Fund I Acc GBP

## Discrete Performance



	0-12m	12m-24m	24m-36m	36m-48m	48m-60m
<span style="color: blue;">■</span> Rathbone Income Fund I Acc GBP	+17.9	-0.1	+2.5	+29.0	-15.0
<span style="color: red;">■</span> IA UK Equity Income	+20.1	-1.2	+0.5	+30.9	-12.1
Rank within sector	65 / 75	29 / 75	32 / 74	42 / 72	47 / 72
Quartile	4	2	2	3	3

All prices in Pence Sterling (GBX) unless otherwise specified. Price total return performance figures are calculated on a bid price to bid price basis (mid to mid for OEICs) with net income (dividends) reinvested. Performance figures are shown in Pound Sterling (GBP).

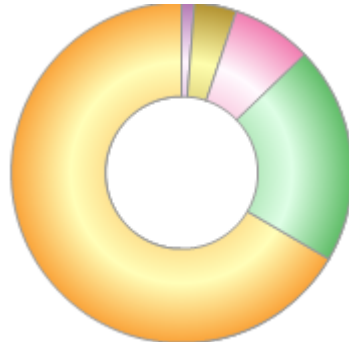
## Contact Details

Address	30 Gresham Street, London, EC2V 7QN
Telephone numbers	020 7399 0399 (Main Number)
Website	<a href="http://www.rathbonesam.com/">www.rathbonesam.com/</a>
Email	<a href="mailto:ram@rathbones.com">ram@rathbones.com</a>

# Rathbone Income Fund I Acc GBP

## Asset Allocation (31 Jul 2024)

Rank	Asset Classes	%
1	FTSE 100	66.53
2	FTSE 250	20.57
3	Overseas	7.64
4	Cash & cash equivalents	4.04
5	FTSE Small Cap	1.22



Powered by data from FE fundinfo

## Sector Breakdown (31 Jul 2024)

Rank	Sectors	%
1	Financials	17.95
2	Consumer staples	15.37
3	Consumer discretionary	14.71
4	Industrials	12.27
5	Health care	9.85
6	Energy	8.12
7	Utilities	7.58
8	Basic materials	4.87
9	Cash & cash equivalents	4.04
10	Others	5.24



Powered by data from FE fundinfo

## Top Holdings (31 Jul 2024)

Rank	Largest Holdings	%
1	Unilever	4.52
2	Lloyds Banking Group	4.37
3	Shell	4.35
4	National Grid	4.31
5	BP	3.76
6	AstraZeneca	3.59
7	British American Tobacco	3.32
8	SSE	3.27
9	Natwest	3.21
10	GSK	3.08