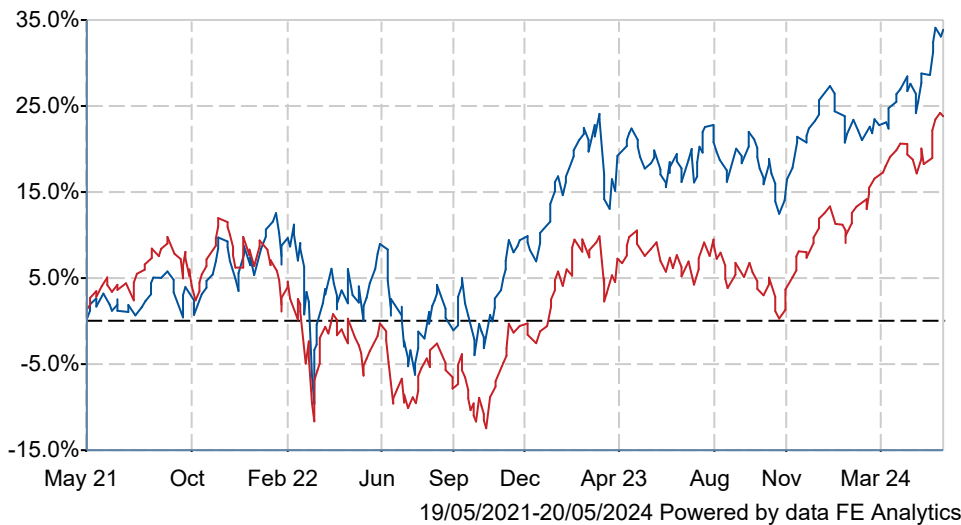




# Invesco European Focus (UK) Z Acc

## What is the Fund's objective?

The objective of the Fund is to achieve capital growth. The Fund invests primarily in shares of European companies excluding the UK. The Fund may use derivatives (complex instruments) to manage the Fund more efficiently, with the aim of reducing risk, minimising costs and/or generating additional capital or income. The Fund has an active investment approach based on stock selection driven by the fund manager's assessment of valuation. The Fund is not constrained by a benchmark and has a flexible approach with no inbuilt bias to country, sector or company size, investing in a typically concentrated portfolio of 30-40 stocks.

## Cumulative Performance



	3m	6m	1yr	3yrs	5yrs
 Invesco European Focus (UK) Z Acc	+8.5	+9.6	+12.1	+32.9	+77.6
 IA Europe Excluding UK	+7.0	+14.0	+13.2	+22.8	+56.3
Rank within sector	40 / 143	137 / 143	106 / 143	16 / 136	11 / 129
Quartile	2	4	3	1	1

## Fund Information

Sector	IA Europe Excluding UK
Asset Class	Equity
Launch Date	12-Dec-2007
Fund Size	£88.6m / \$112.6m (30-Apr-2024)
Fund Manager	John Surplice James Rutland

## How does FE fundinfo rate this fund?

FE fundinfo Crown Rating	
AFI	NO
Risk Score	118

## Investment Details

Initial Charge	0.80%
Annual Charges	0.80%
Note to charges	Initial Charges: max.;
Minimum Initial Investment	£ 500
Minimum Additional Investment	£ 500
Dividend Policy	Nov 01 (Final)

## Prices

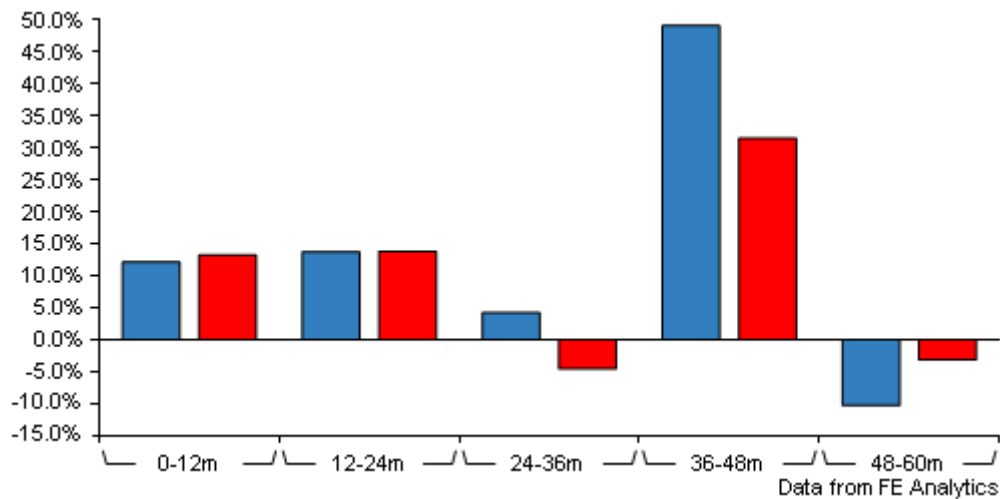
Unit Type	ACC
Mid	672.65(GBX)
Price Date	20 May 2024
Yield	2.60

## Codes

Citicode	GUVF
SEDOL	B8N44N5
ISIN	GB00B8N44N55

# Invesco European Focus (UK) Z Acc

## Discrete Performance



	0-12m	12m-24m	24m-36m	36m-48m	48m-60m
<div></div> Invesco European Focus (UK) Z Acc	+12.1	+13.7	+4.2	+49.1	-10.3
<div></div> IA Europe Excluding UK	+13.2	+13.8	-4.6	+31.5	-3.2
Rank within sector	106 / 143	63 / 142	7 / 136	14 / 131	75 / 129
Quartile	3	2	1	1	3

All prices in Pence Sterling (GBX) unless otherwise specified. Price total return performance figures are calculated on a bid price to bid price basis (mid to mid for OEICs) with net income (dividends) reinvested. Performance figures are shown in Pound Sterling (GBP).

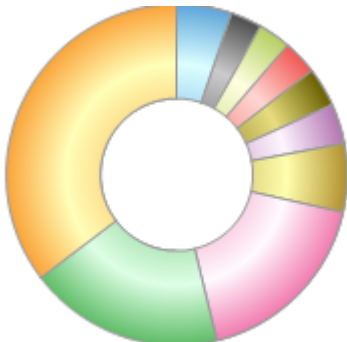
## Contact Details

Address	Invesco Administration Centre, PO Box 586, Darlington, United Kingdom, DL1 9BE
Telephone numbers	MN (Fax Number) 44 20 7543 3588 (Main Number)
Website	<a href="http://www.invesco.co.uk">www.invesco.co.uk</a>
Email	<a href="mailto:enquiry@invesco.com">enquiry@invesco.com</a>

# Invesco European Focus (UK) Z Acc

## Asset Allocation (31 Mar 2024)

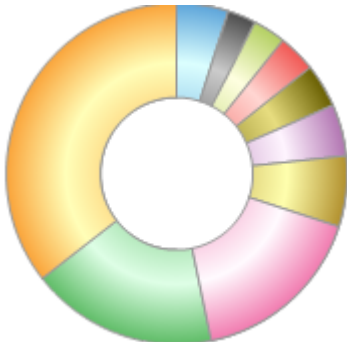
Rank	Asset Classes	%
1	French Equities	35.41
2	Dutch Equities	18.45
3	German Equities	17.69
4	Finnish Equities	6.52
5	Italian Equities	3.75
6	UK Equities	3.69
7	Belgian Equities	3.32
8	Spanish Equities	3.06
9	Irish Equities	2.95
10	Others	5.16



Powered by data from FE fundinfo

## Regional Breakdown (30 Apr 2024)

Rank	Regions	%
1	France	35.52
2	Netherlands	17.73
3	Germany	16.65
4	Finland	6.70
5	Belgium	4.92
6	UK	4.10
7	Italy	3.63
8	Spain	3.09
9	Ireland	2.72
10	Others	4.94



Powered by data from FE fundinfo

## Sector Breakdown (30 Apr 2024)

Rank	Sectors	%
1	Industrials	19.85
2	Financials	18.60
3	Energy	11.93
4	Technology	9.86
5	Health Care	9.80
6	Basic Materials	9.73
7	Utilities	7.63
8	Consumer Discretionary	4.95
9	Consumer Staples	4.14
10	Others	3.51



Powered by data from FE fundinfo

## Top Holdings (30 Apr 2024)

Rank	Largest Holdings	%
1	Total	5.04
2	Heineken	4.14

# Invesco European Focus (UK) Z Acc

Rank	Largest Holdings	%
3	AstraZeneca	4.10
4	Unicredit	3.63
5	Merck	3.60
6	ING	3.51
7	Veolia	3.42
8	Siemens	3.25
9	AXA	3.22
10	Banco Santander	3.09