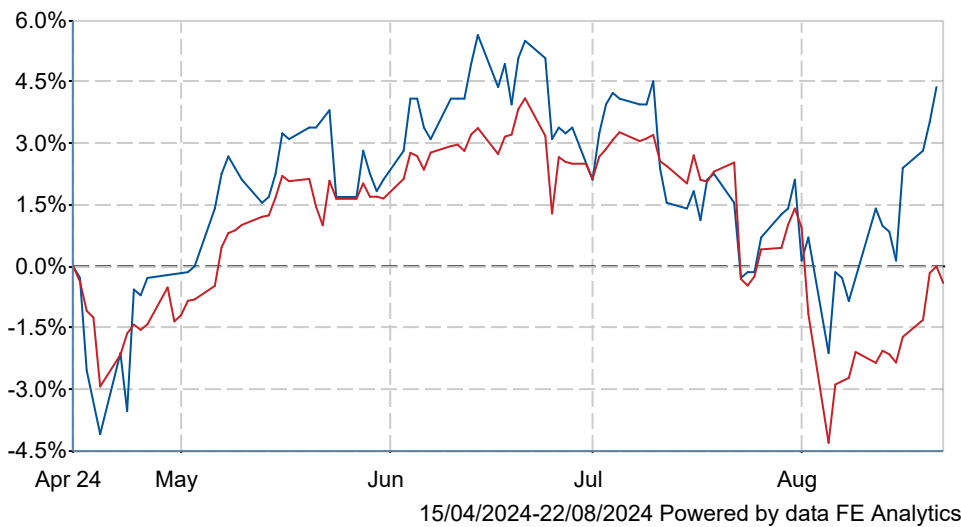





# Vietnam Enterprise Investments NAV GBP

## What is the Fund's objective?

The Fund seeks long-term capital appreciation via holdings in listed and pre-IPO companies. Investment criteria are attractive growth and value metrics, good corporate governance, and alignment with Vietnam's underlying growth drivers. The Fund may also hold equity-linked instruments and private equity. VEIL maintains a broad universe, which includes companies operating and/or listed outside of Vietnam, and it looks to outperform the VN Index on a rolling three-year basis.

## Cumulative Performance



	3m	6m	1yr	3yrs	5yrs
 Vietnam Enterprise Investments NAV GBP	+1.0	+2.5	+4.5	-10.6	+31.0
 Country Specialist	-1.4	+0.9	+12.2	-5.9	+20.8
 NAV	n/a	n/a	n/a	n/a	n/a
Rank within sector	1 / 4	2 / 4	3 / 4	3 / 4	3 / 4
Quartile	1	2	3	3	3

Sector	Country Specialist
Asset Class	Equity
Launch Date	11-Aug-1995
Fund Size	£1,426.4m / \$1,866.5m (21-Aug-2024)
Fund Manager	Tuan Le Anh

## How does FE fundinfo rate this fund?

FE fundinfo Crown Rating	Fund in unrated sector
Risk Score	<b>184</b>

## Investment Details

Initial Charge	n/a
Annual Charges	2.00%
Note to charges	n/a
Minimum Initial Investment	n/a
Minimum Additional Investment	n/a
Dividend Policy	n/a
Management Contract	n/a

## Prices

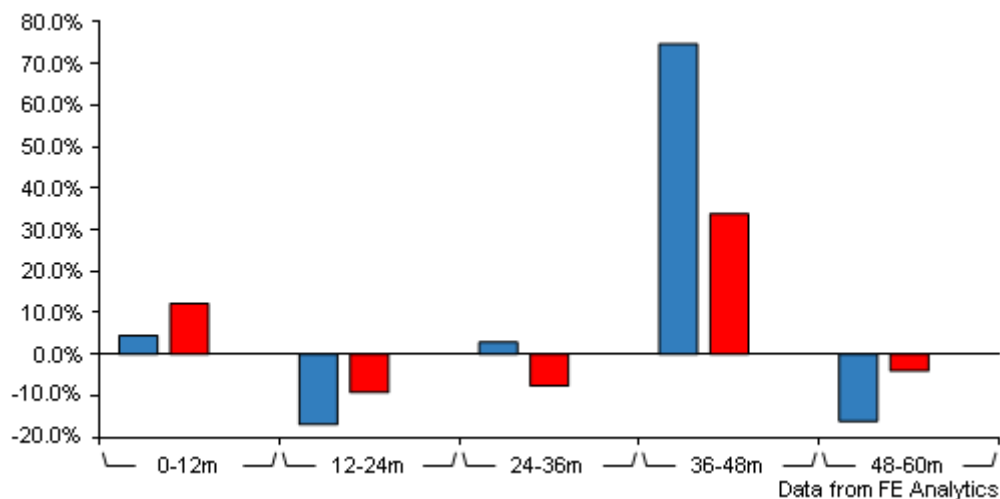
Unit Type	ACC
Mid	7.40(GBP)
Price Date	21 Aug 2024
Yield	n/a
Discount	n/a
Diluted NAV	
- Estimate	n/a
- Last Published	n/a

## Codes

Citicode	O6LI
SEDOL	-
ISIN	KYG9361H1092
TIDM	-

# Vietnam Enterprise Investments NAV GBP

## Discrete Performance



	0-12m	12m-24m	24m-36m	36m-48m	48m-60m
<span style="color: blue;">■</span> Vietnam Enterprise Investments NAV GBP	+4.5	-16.9	+2.9	+74.7	-16.1
<span style="color: red;">■</span> Country Specialist	+12.2	-9.2	-7.6	+33.8	-4.0
<span style="color: orange;">■</span> NAV	n/a	n/a	n/a	n/a	n/a
Rank within sector	3 / 4	4 / 4	3 / 4	2 / 4	3 / 4
Quartile	3	4	3	2	3

All prices in Pence Sterling (GBX) unless otherwise specified. Price total return performance figures are calculated using closing mid prices and with net income (dividends) reinvested. NAV total return performance figures are calculated using fully diluted (where applicable) daily estimated NAV figures from Thomson Financial Datastream. Performance figures are shown in Pound Sterling (GBP).

## Contact Details

**Address** Unit 2406, 24/F., 9 Queen's Road, Central, Hong Kong

**Telephone numbers** +852 3979 8100 (Main Number)

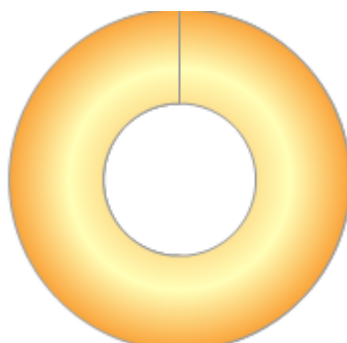
**Website** [www.dragoncapital.com/](http://www.dragoncapital.com/)

**Email** [enquiriesdcmhk@dragoncapital.com](mailto:enquiriesdcmhk@dragoncapital.com)

# Vietnam Enterprise Investments NAV GBP

## Asset Allocation (31 May 2024)

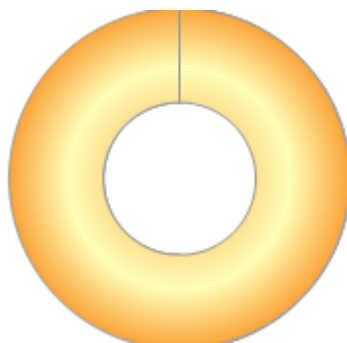
Rank	Asset Classes	%
1	Asia Pacific Emerging Equities	100.00



Powered by data from FE fundinfo

## Regional Breakdown (31 May 2024)

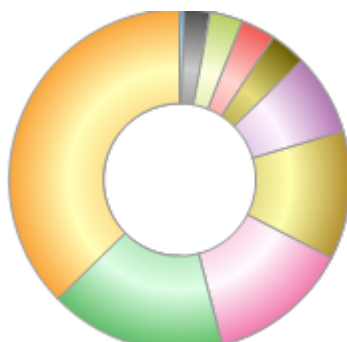
Rank	Regions	%
1	Vietnam	100.00



Powered by data from FE fundinfo

## Sector Breakdown (31 May 2024)

Rank	Sectors	%
1	Financials (Banks)	36.20
2	Real Estate	16.20
3	Materials	13.00
4	Consumer Disc.	11.80
5	IT	7.50
6	Financials (Diversified)	3.30
7	Consumer Staples	3.20
8	Industrials	3.00
9	Utilities	2.40
10	Energy	0.40



Powered by data from FE fundinfo

## Top Holdings (31 May 2024)

Rank	Largest Holdings	%
1	Hoa Phat Group	8.70
2	Mobile World	8.30

# Vietnam Enterprise Investments NAV GBP

Rank	Largest Holdings	%
3	ACB	7.60
4	VP Bank	7.60
5	FPT Corporation	7.50
6	Vietcombank	6.40
7	Techcombank	4.60
8	MB Bank	3.30
9	SSI Corporation	2.80
10	Vinhomes	2.70