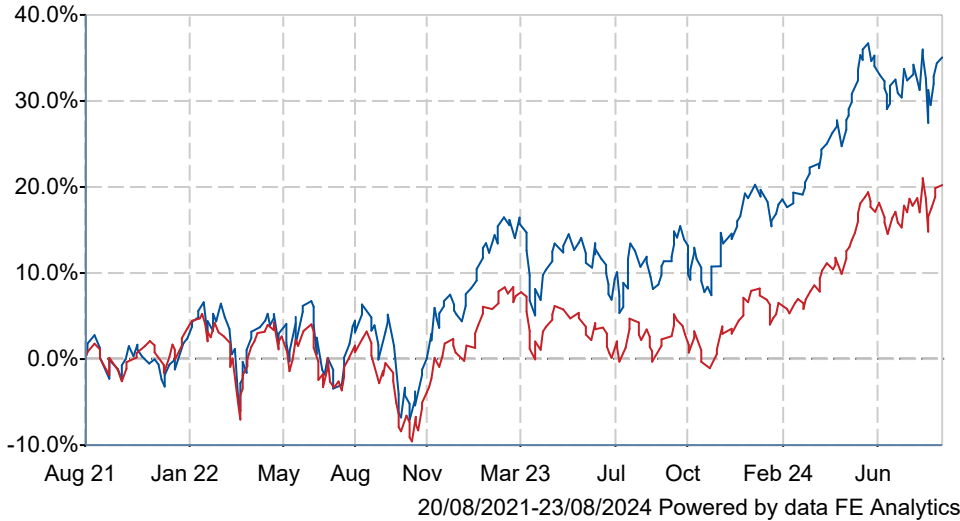




Man GLG Income C Professional Acc

What is the Fund's objective?

The objective of the Fund is to achieve a level of income above the FTSE All Share Index together with some capital growth through investing, directly or indirectly, primarily in UK equities or in equities of companies which derive a substantial part of their revenues from activities in the UK.

Cumulative Performance



	3m	6m	1yr	3yrs	5yrs
 Man GLG Income C Professional Acc	-0.7	+12.6	+24.7	+34.6	+52.1
 IA UK Equity Income	+1.5	+12.5	+19.9	+19.1	+36.9
Rank within sector	73 / 75	33 / 75	10 / 75	6 / 74	8 / 72
Quartile	4	2	1	1	1

Fund Information

Sector	IA UK Equity Income
Asset Class	Equity
Launch Date	05-Mar-1999
Fund Size	£1,921.4m / \$2,514.1m (16-Aug-2024)
Fund Manager	Henry Dixon

How does FE fundinfo rate this fund?

Alpha Manager Rating
Henry Dixon

FE fundinfo Crown Rating


Risk Score
120

Other ratings

Morningstar Analyst Rating



Investment Details

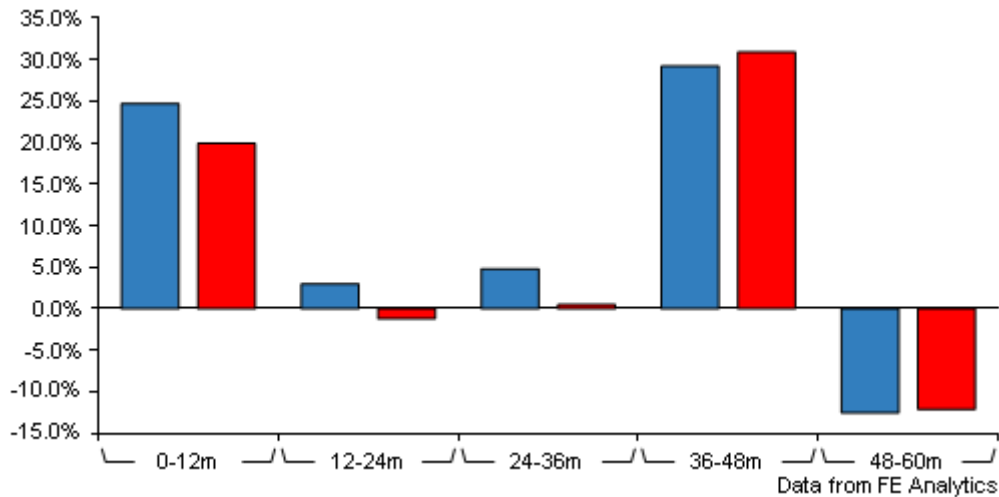
Initial Charge	0.00%
Annual Charges	0.75%
Note to charges	Initial Charges: max.;
Minimum Initial Investment	£ 500,000
Minimum Additional Investment	£ 1,000
Dividend Policy	Jan 01, Feb 01, Mar 01 (Final), Apr 01, May 01, Jun 01, Jul 01, Aug 01, Sep 01, Oct 01, Nov 01, Dec 01

Prices

Unit Type	ACC
Mid	413.50[GBX]
Price Date	23 Aug 2024
Yield	4.83

Man GLG Income C Professional Acc

Discrete Performance



	0-12m	12m-24m	24m-36m	36m-48m	48m-60m
Man GLG Income C Professional Acc	+24.7	+3.0	+4.8	+29.2	-12.5
IA UK Equity Income	+19.9	-1.2	+0.5	+30.9	-12.1
Rank within sector	10 / 75	7 / 75	21 / 74	37 / 72	36 / 72
Quartile	1	1	2	3	2

All prices in Pence Sterling (GBX) unless otherwise specified. Price total return performance figures are calculated on a bid price to bid price basis (mid to mid for OEICs) with net income (dividends) reinvested. Performance figures are shown in Pound Sterling (GBP).

Codes

Citicode	ZJ86
SEDOL	B0117C2
ISIN	GB00B0117C28

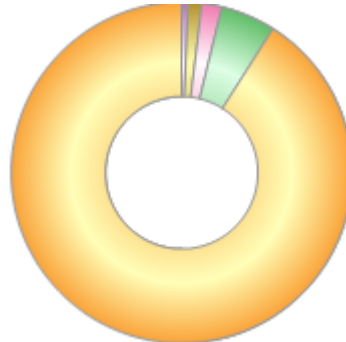
Contact Details

Address	GLG Partners LP, Riverbank House, 2 Swan Lane, London, United Kingdom, United Kingdom, EC4R 3AD
Telephone numbers	+44 (0) 20 7016 7000 (Main Number)
Website	www.glgpartners.com
Email	info@glgpartners.com

Man GLG Income C Professional Acc

Asset Allocation (31 Jul 2024)

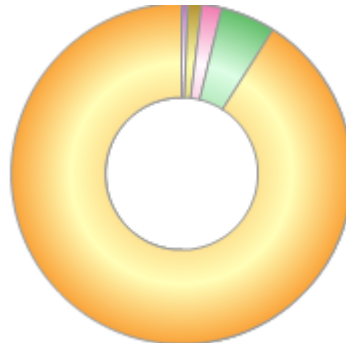
Rank	Asset Classes	%
1	United Kingdom Equities	91.08
2	Cash	5.23
3	Other Equities	1.89
4	France Equities	1.25
5	Ireland Equities	0.55



Powered by data from FE fundinfo

Regional Breakdown (31 Jul 2024)

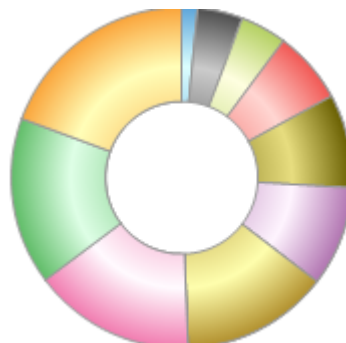
Rank	Regions	%
1	United Kingdom	91.08
2	Cash	5.23
3	Other	1.89
4	France	1.25
5	Ireland	0.55



Powered by data from FE fundinfo

Sector Breakdown (31 May 2024)

Rank	Sectors	%
1	Energy	19.40
2	Industrials	15.86
3	Materials	15.37
4	Health Care	13.98
5	Utilities	9.49
6	Consumer Discretionary	8.85
7	Consumer Staples	6.92
8	Real Estate	4.42
9	Money Market	4.25
10	Others	1.46



Powered by data from FE fundinfo

Top Holdings (31 Jul 2024)

Rank	Largest Holdings	%
1	GSK PLC	5.86
2	BARCLAYS PLC	5.19

Man GLG Income C Professional Acc

Rank	Largest Holdings	%
3	HSBC HOLDINGS PLC	4.86
4	BP P.L.C.	4.16
5	IMPERIAL BRANDS PLC	3.96
6	SHELL PLC	3.89
7	LLOYDS BANKING GROUP PLC	3.83
8	RIO TINTO PLC	3.46
9	NATIONAL GRID PLC	2.91
10	BEAZLEY PLC	2.88