

IFSL Church House UK Smaller Companies A

What is the Fund's objective?

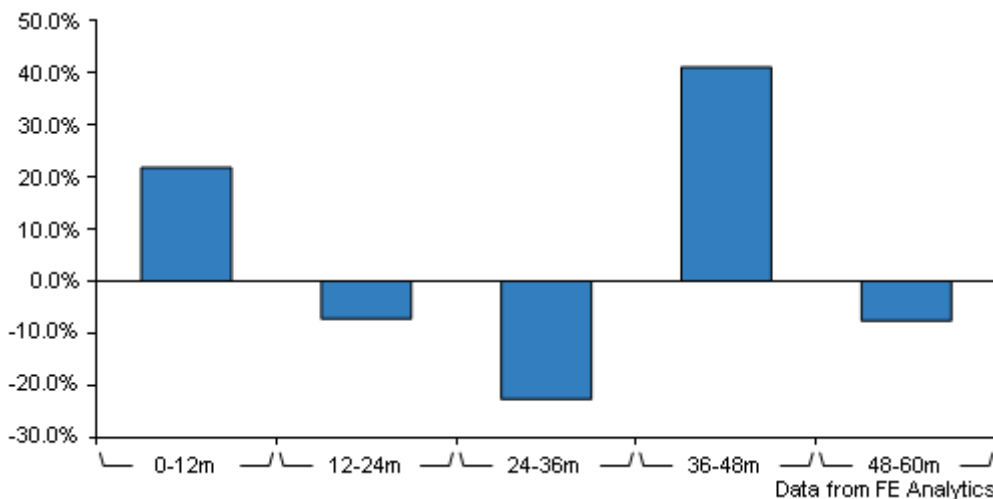
The fund aims to achieve long-term capital growth. Long-term in this context means five years or more. The Fund will invest at least 80% in shares of UK smaller companies (those incorporated or domiciled in the UK) with a market capitalisation of less than £2bn at the time of purchase.

Cumulative Performance



	3m	6m	1yr	3yrs	5yrs
IFSL Church House UK Smaller Companies A	+0.8	+10.0	+21.8	-12.6	+13.9

Discrete Performance




	0-12m	12m-24m	24m-36m	36m-48m	48m-60m
IFSL Church House UK Smaller Companies A	+21.8	-7.2	-22.7	+41.1	-7.6

All prices in Pence Sterling (GBX) unless otherwise specified. Price total return performance figures are calculated on a bid price to bid price basis (mid to mid for OEICs) with net income (dividends) reinvested. Performance figures are shown in Pound Sterling (GBP).

Sector	IA Unclassified
Asset Class	Equity
Launch Date	29-Feb-2012
Fund Size	£14.0m / \$18.5m (23-Aug-2024)
Fund Manager	Fred Mahon James Mahon Rory Campbell-Lamerton

How does FE fundinfo rate this fund?

FE fundinfo Crown Rating	
Risk Score	122

Investment Details

Initial Charge	0.00%
Annual Charges	1.25%
Note to charges	n/a
Minimum Initial Investment	£ 5,000
Minimum Additional Investment	£ 5,000
Dividend Policy	Apr 01, Oct 01 (Final)

Prices

Unit Type	ACC
Mid	154.40(GBX)
Price Date	23 Aug 2024
Yield	1.18

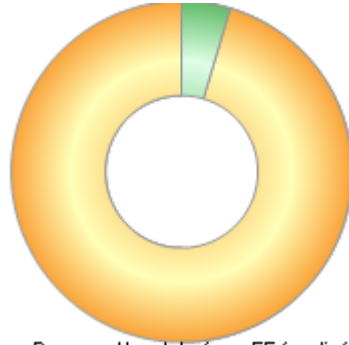
Codes

Citicode	0ZSJ
SEDOL	B79XM02
ISIN	GB00B79XM025

IFSL Church House UK Smaller Companies A

Asset Allocation (31 Mar 2024)

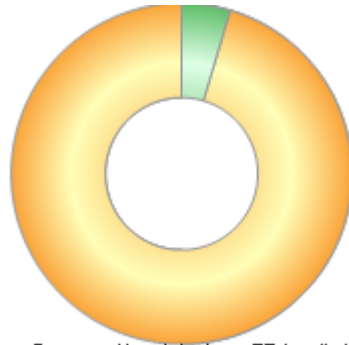
Rank	Asset Classes	%
1	United Kingdom Equities	95.40
2	Cash deposits	4.60



Powered by data from FE fundinfo

Regional Breakdown (31 Mar 2024)

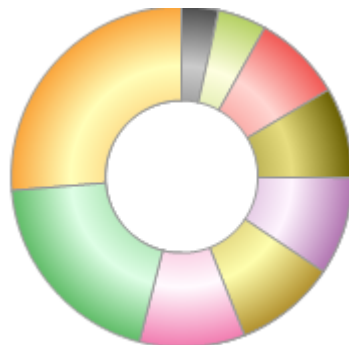
Rank	Regions	%
1	United Kingdom	95.40
2	Cash deposits	4.60



Powered by data from FE fundinfo

Sector Breakdown (31 Mar 2024)

Rank	Sectors	%
1	Industrials	26.30
2	Consumer Discretion	19.70
3	Technology	10.00
4	Banks & Other Financials	9.60
5	Property	9.30
6	Staple Goods & Services	8.60
7	Media & Telcoms	8.40
8	Cash / Treasury	4.60
9	Pharma & Healthcare	3.50



Powered by data from FE fundinfo

Top Holdings (31 Mar 2024)

Rank	Largest Holdings	%
1	Judges Scientific	6.40
2	Diploma	5.90

Contact Details

Address 50 Grosvenor Street,
Mayfair, London,
United Kingdom,
W1K 3HW

Telephone numbers 020 7534 9870 (Main
Number)

Website www.ch-investments.co.uk

Email enquiries@church-house.co.uk

IFSL Church House UK Smaller Companies A

Rank	Largest Holdings	%
3	Greggs	5.40
4	Beazley	5.00
5	Trainline	4.60
6	Porvair	4.40
7	Ashstead Technology	4.20
8	Somero	4.00
9	Cranswick	3.90
10	Bioventix	3.50